



Fylde/Wyre | Chorley/West Lancashire | Preston/South Ribble | Hyndburn/Rossendale | Lancaster/Ribble Valley | Pendle/Burnley

**LIBRARY
MUSIC
GIGS**

PAGE 9



**YOUR
FIRST
HOLIDAY**

PAGE 10



Lancashire
County
Council



visionlancashire

Community news from across YOUR county

www.lancashire.gov.uk / March 2010

NO INCREASE TO YOUR COUNCIL TAX THIS YEAR

invision

Have your say on transport

WHAT do think about transport in Lancashire? Could it be improved? Share your views as part of the Joint Lancashire Local Transport Plan.

■ **Lancashire News - Page two**

£100m school improvements

SCHOOL buildings will be rebuilt or refurbished in a scheme to provide top-quality education in Hyndburn, Pendle and Rossendale.

Lancashire is one of just 12 councils to be awarded the funding.

■ **Lancashire News - Page three**

Rural business help

FINANCIAL support for new and existing businesses in rural areas with the Rural Lancashire Development Fund.

■ **Lancashire News - Page four**

New chapter

LIBRARIES across the county are changing to offer new services including live music, new technology, living books and bright decor. They might be different to how you remember.

■ **Living In Lancashire - Page eight**

Pupils go online

LAPTOPS have been given out to almost 600 pupils in care to help with their school course work. The aim is to help them to make the most of their academic potential.

■ **Lancashire folk - Page ten**



SCHOOLS BECOME ONE

THE opening of a new school campus in West Lancashire brings together children from mainstream and special schools on the same site.

County Councillor Tony Jones, Chairman of Lancashire County Council, officially opened the new school campus in Skelmersdale.

It brings together Brookfield Park Primary School and Kingsbury Primary Special School on a joint campus with shared areas.

The county council has invested £3.6 million in the campus, with the schools contributing over £200,000 of their own funds.

Both schools are now housed within the completely refurbished Brookfield Park building and a brand new, two-storey extension.

The new building houses an Early Years area for under-fives with and without special needs, a multi-sensory room full of sight, sound and touch features, and IT facilities that can be used by pupils and the local community.

Councillor Jones said: "It is heart-warming to see all the children from these two schools so obviously enjoying each other's company and this fantastic new campus."

■ Stephen Axon

THERE will be no increase in Council Tax from Lancashire County Council.

Savings have been agreed by the council totalling almost £24 million, rising to over £36 million in a full year.

The budget aims to protect vital services for residents while reducing the amount spent on running our operations.

Around £22 million of these savings are achieved through increased efficiency without affecting essential services. The remainder are made by recovering more costs or with small reductions in the lowest impact areas.

Geoff Driver, leader of the county council, said: "This is the freeze in the Council Tax that we promised the people of Lancashire."

"This budget leaves the county council as well prepared as it could possibly be to face the inevitable financial difficulties that lie ahead."

"It is based upon the simple yet fundamental principle that the county council exists for one purpose and one purpose only: to serve the people of Lancashire."

The county portion of Council Tax will now stay the same as last year with an average for Band D properties of £1,108.30.

The final Council Tax bill includes figures from the county council, district councils, the combined fire authority and the police authority - along with town and parish councils, where appropriate.



Councillor Geoff Driver

HELPING NATURE

A DOZEN schools across Lancashire will be the proud recipients of 100 trees each, as part of an exciting programme of tree planting.

A countywide competition invited schools to bid for the trees to create wildlife areas, outdoor classrooms and shelter belts.

It was organised by Lancashire County Council's environmental projects team in partnership with Lathom-based Mahood Brothers Plant Nurseries, who supplied the trees.

Planting has already started at Garstang Community Primary School, where their 100 free trees will be used to create a

sheltered outdoor classroom. It will feature a mix of native species to attract wildlife and provide a useful educational resource.

County Councillor Valerie Wilson, who represents Garstang, said: "All these schools have done wonderfully well to be selected for such a worthwhile initiative."

"I'm sure pupils at Garstang Community Primary School will benefit from the new sheltered outdoor classroom."

The programme also celebrates the centenary of Mahood Brothers Plant Nurseries, who are based in West Lancashire.



DIG THIS | Councillor Valerie Wilson (centre) with Garstang Primary School pupils.

A cassette version of Vision is now available for visually impaired people from Galloway's Society for the Blind by calling 01772 744148

Parking fine

COULD you please clarify a debate that my husband and I have been having for several days now?

My husband is a Blue Badge holder and is under the impression that the badge cannot be used in any other vehicle, such as our grandson's, other than our own. Is this correct?

Mrs T Crowe
Colne

GABBY SAYS: The Blue Badge will have your husband's photograph and signature on it. This means that the badge is assigned to your husband. Therefore he can use that badge in any vehicle that he is a passenger or driver in. This would mean that your husband's blue badge can be used in your grandson's vehicle as long as your husband is with the badge when it is used. If you would like further information on the Blue Badge policies please visit our website at www.lancashire.gov.uk or contact the Blue Badge Team on 0845 053 0049.

LETTER OF THE MONTH

Looking for our school bus pass

MY child misplaced his bus pass last Friday.

He thinks that it may have dropped out of his pocket when he got on the bus, but can't be certain.

We've searched the house but there's no sign of it. Unfortunately I think I'm going to have to purchase a replacement. How do I do this?

Mr K Robson
Cleveleys

GABBY SAYS: To order a replacement pass you will need to contact the School Transport Team. The standard price for a replacement bus pass is £15, however this can vary depending on individual circumstances. We would advise that you contact the bus operator beforehand to enquire if the pass has been handed in. To order a new pass or get details of the bus



operators please contact the School Transport Team on 01772 534 588.

No parking

LATELY I have been having a nightmare parking on my road and particularly outside my house. I do live in a busy area and a busy street; however I am almost certain that half of the vehicles that are parked on my street are not from the residents who live there, more like friends

and visitors.

Is there anything that the highways team can do to relieve this problem?

Mr P Haggarty
St Annes

GABBY SAYS: Unfortunately, the county council's highways team do not have the authority to ask vehicles to move or take action on a parked vehicle.

There are a few options that may be open to you. The first is to apply for an 'H Bar' which is marked outside your driveway to stop vehicles parking in front of your drive. The second is single white or double yellow lines; however this kind of parking restriction would also affect the other residents of the

street as well.

The best way to solve problems such as these is to try and negotiate with your neighbours. If a vehicle is contravening any current parking restriction on the road you can contact Lancashire Parking Services on 0800 195 2774.

Job hunting

I'M wondering if you could help me please. My son is currently unemployed and looking for work. Could you please provide me with an address so he can send a copy of his CV to you?

Mrs S McDonald
St Annes

GABBY SAYS: Lancashire County Council can only accept applications using one of our standard application forms.

If you would like an application form for a vacancy, which you have seen advertised, please contact the corporate vacancies helpline on 0845 053 0008. Alternatively you can apply online via our website for most vacancies.

Visit our website at: www.lancashire.gov.uk where you will find a full list of our job vacancies along with information and contact details.

Spring clean

I WANT to have a general clear out and tidy up of my flat and will therefore need to go to the local household waste recycling centre. I've been told that because I'm using my friend's van, I will need a permit. I've never done this and would appreciate it if you can inform me of anything else that may be required

Miss K Ross
Chorley

GABBY SAYS: Yes, you are right in thinking that you will need a permit. Permits are required to gain access to any of

the Household Waste Recycling Centres in Lancashire when travelling in a van. To obtain a permit you can order one from our website www.lancashire.gov.uk or contact the waste helpline on 0845 0500 957 and a Customer Service Officer will be happy to go through the permit process with you. The waste permits are free and in order to obtain a permit you will need to know the vehicle registration number, make and model; and the site that you would like to visit. You will also need to have a list of the items that you wish to dispose of, so they can be added to the permit for you.

askgabby

Don't know who to contact about council services? Are you baffled by bureaucracy?



Call 0845 053 0000 or
email: enquiries@lancashire.gov.uk

justamin

Early Christmas

COUNTY Councillor Mike Calvert has donated £340 to Laneshawbridge Events Committee to fund Christmas films for children.

Gardens grant

COUNTY Councillor Jeff Sumner has awarded a £250 grant to Chicken Hill Gardens so residents can grow fruit and vegetables.

Childs play

COUNTY Councillor Carolyn Evans has provided a £600 grant to Mossy Lea Primary School PTFA for new children's play facilities



CORONER'S COURT

Improved services to hold inquests

■ Tom Walker

LANCASHIRE'S new coroner's court and offices have been officially opened by County Councillor Albert Atkinson, deputy leader of the county council.

The Coroner's jurisdiction of Preston and West Lancashire has moved to its new base in the Fulwood area of Preston.

It covers Preston, Chorley, South Ribble, West Lancashire, Wyre, Lancaster and Morecambe.

Lancashire County Council has invested over £300,000 in the new accommodation, which is fully accessible for disabled people.

It has several features that mean the service is better able to meet the needs of the bereaved at difficult times.



OFFICIAL OPENING | Coroner Dr James Adeley (left) with County Councillor Atkinson (right) marking the event.

The new building will not affect local inquests held in Lancaster, Fleetwood and Ormskirk which will continue to be heard in these courts.

Speaking at the ceremony, Councillor Atkinson said: "While for the vast majority of people, a visit to the coroner's

court is an experience they find very difficult, we can at least try to make things as comfortable as possible for them while they're there.

"Staff are able to provide bereaved people with a professional service that responds sensitively to their needs."

SUPPORTING BUSINESS



West Lancashire specialist electronics company TRM Electronics Limited has expanded with help from Lancashire County Council's Rosebud Finance. Pictured is County Councillor David O'Toole (right) with the company's directors

Putting plans together

WORK is now underway to develop the next Joint Lancashire Local Transport Plan and your views are wanted.

Andrew Hewitson, transport plan policy officer, said: "It's important to give people good access to the services and opportunities they need to improve their

quality of life.

"Developing transport in the right way can also support the local economy and reduce our carbon emissions."

The plan will bring Lancashire County Council together with Blackburn with Darwen and Blackpool Councils.

The councils involved

have now put forward a list of 'challenges' that the plan could meet.

People in all three council areas are being asked for their views to assist in the development of the plan.

To contribute to the debate turn to page six and fill in the form or visit www.lancashire.gov.uk



A full job description
of all vacancies is available
on our website

www.lancashire.gov.uk/vacancies



EDUCATION

£100 million revamp of Lancashire schools



BOOST | Susie Charles

■ **Andy Swain**

SCHOOLS in Lancashire will receive a share of almost £100 million to rebuild and renovate their buildings.

A successful bid for funding means that Lancashire County Council will receive up to £100m for the next phases of its Building Schools for the Future (BSF) programme.

The money will be spent on rebuilding and refurbishing the schools to provide top-quality education for secondary school-aged pupils.

The schools taking part are located in Hyndburn, Pendle and Rossendale.

Lancashire is one of just 12 councils across the country to successfully bid for this latest round of funding for

Building Schools for the Future (BSF) - the government's capital investment programme in secondary education.

This latest funding will enable the county council to continue with phases four and five of the programme.

The first phases of the BSF programme have already seen a £250 million investment transform

secondary education in Burnley and Pendle.

County Councillor Susie Charles, cabinet member for children and schools, said: "This will enable us to finish the job we have started in the east of the county.

"We are committed to ensuring that this investment delivers the schools that our young people deserve."

■ COOL PRIZE FOR PUPILS



MIDDLEFORTH CE Primary School, Lower Penwortham, won £1,000 in The Cool Climate Challenge organised by Lancashire County Council. Pictured with pupils is Tim Ashton, cabinet member for environment and planning.

PROTECTING CHILDREN

£5m extra to help vulnerable children

■ **Greg Bowen**

SERVICES to help vulnerable children and young people have received a £5 million investment from Lancashire County Council.

Over the next four years the money will be used to develop an early intervention strategy to tackle potential problems before they get worse and strengthen child protection services.

Specific aspects of the

plan include funding to develop early intervention teams; and freeing social workers to concentrate on frontline work.

The plan will also encourage children and young people in the care system to become more involved in decisions about their care and improve their educational achievement.

Susie Charles, cabinet member for children and schools, said: "Developing a preventative, early in-

tervention approach means we can tackle problems before they develop, so we can reduce the number of children and young people referred to more acute services.

"At the same time we are ensuring that our child protection measures are as robust as possible by ensuring we have enough well-trained social workers to deal effectively with child protection issues."

LANCASHIRE County Council's road safety manager has won a prestigious national award for his contribution to road safety. Neil Cunliffe was

presented with a Prince Michael International Road Safety award at an event in London.

The award presented by Prince

Michael of Kent, recognises Neil's use of innovative road safety ideas.

Neil also received an OBE in the New Year Honours.

County first to tackle misuse

A PILOT project in Lancashire is underway to tackle alcohol and drug abuse.

Believed to be the first in the country, the project will provide people who use the service with much more choice and control over their treatment.

The project will mean that people who successfully complete their first

three months of treatment could be given a personal budget to choose options such as anger management and building self-esteem.

The objective of this pioneering approach is to encourage people to make choices and be more in control of how their personalised treatment progresses.

justamminute



Road safety drama



HELP | Road safety

LANCASHIRE County Council's road safety group has developed the 'Now That's What I Call Worst Hits' package in partnership with the Highways Agency.

Pupils at 20 schools will learn about road safety from a 30-minute drama, a

discussion session, a free interactive DVD and lesson plans for teachers.

New children's centre

NEW services for young families in the Trawden and Foulridge areas in Pendle will be provided at the new Riverside Children's Centre.

Based at Trawden Library, the centre includes facilities such as a bright playroom and a specially created outdoor play area. The aim of the revamped play area is to enable children to learn new skills through play.

Play area gets new look



PLAY | Boy on slide

DESIGNS are to be officially unveiled for a refurbished and expanded play area at Fell View in Caton.

The redesigned site will feature a variety of play equipment and landscaping.

The aim is to encourage children to learn new skills through play.

Smoking out fake tobacco

LANCASHIRE County Council is warning consumers that the sale of counterfeit tobacco is on the increase in East Lancashire.

This follows the seizure of 1,100 packs of counterfeit cigarettes from a trader in Nelson.

For more information, call the Consumer Direct line

Lancashire
County Council



Looking for finance for your business:
We can help

Looking for finance for your clients:
We can help

Looking to start a business:
We can help

Rosebud is not just a loan, it's a complete financial solution offering loans and equity related investments for new and existing business. If you're a financial services professional looking to source finance for your clients then we can help.

rosebud
LANCASHIRE COUNTY DEVELOPMENTS LIMITED

01772 536652

rosebud a complete financial solution



Competition **LOVE FOOD**
FOOD for THOUGHT hate waste

Do you have a tasty way to make the most of your leftovers? If you do then you could be in with a chance to win one of our great prizes with Vision and the Love Food Hate Waste campaign.

We want your favourite recipes that get the most out of your leftovers. Perhaps its an old recipe that's been passed down through the generations or something you've come up with for this competition.

Mark Chapman from the Lytham Kitchen will judge the entries and the very best will win the star prize of a meal for two at Mark's restaurant and a signed copy of the Hairy Bikers 'Mums Know Best' Family cookbook. Ten runners up will be sent the M & S 'Love your Leftovers' recipe book.

Mark, who has produced a video with the county council showing how he makes the most of ingredients in his recipes said: "There's never been a better time to learn how to make your food and your money go further."

"Lancashire is famous for its food and I know that the Vision readers won't disappoint with their recipes. I will be looking out for great tastes and clever use of leftovers. All you need to do is make sure that your recipe can be made by your average home cook."

Send your recipes by email to:
lovefoodhatewaste@lancashire.gov.uk
Or by post to: Janine Lund, Environment Directorate, Lancashire County Council, Winckley House, Cross Street, Preston PR1 8RD
Closing date - 12 April 2010

By entering this competition you consent to allow your recipe to be published in a future edition of Vision, on the LCC web pages and on www.lovefoodhatewaste.com/lancashire.

The judge's decision is final and no correspondence will be entered into.

WASTE MANAGEMENT

Reduce food waste and save money

■ **Martin Crabtree**

NEW research by the Waste and Resources Action Programme has shown that on average we throw away £50 a month on food and drink that could have been eaten.

If you want to keep that money in your pocket then www.lovefoodhatewaste.com can help you.

With recipes, storage tips, a portion calculator and advice on packaging dates (and that's just for starters) the site shows you how to make the most of your food.

Lancashire County Council is supporting the national Love Food Hate Waste campaign.

Janine Lund, waste minimisation officer, said, "Some people see wasted food as a failure of their housekeeping skills, whereas others don't give it a second thought."

"It's about cooking the right amount of food to feed my family so that there is little left to throw away at the end of a meal,

so I regularly use the portion calculator.

"Wasted food makes a significant contribution to climate change.

"If we all stopped throwing away food that could have been eaten it would have a carbon impact equivalent to taking one in four cars off the road."

justamin

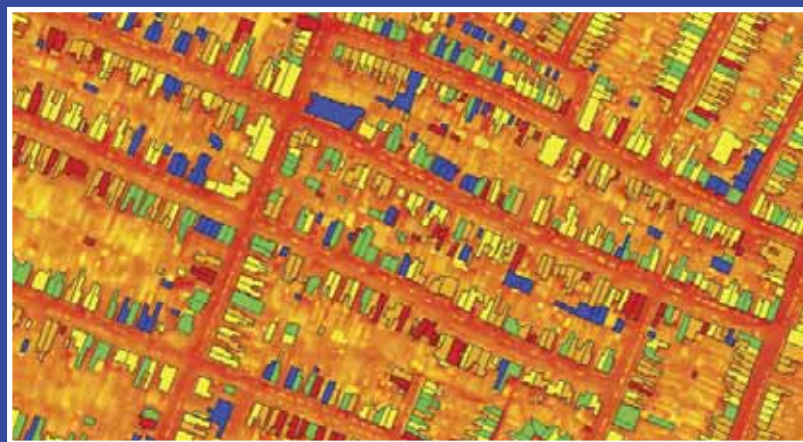
Blooming great

County Councillor Janice Hanson has provided a £645 grant towards a new planter for Morecambe's west end.

It's covered

CHARNOCK Richard Cricket Club is buying a new pitch cover with a £400 grant from County Councillor Peter Malpas.

A HOT TOPIC



A THERMAL imaging survey will identify 'hot spots' where buildings are losing the most heat. Specific areas will then be targetted to show households and businesses how to cut their energy bills. The image shows a similar survey.

ECONOMIC DEVELOPMENT

Ploughing the field of business success

■ **Mark McAdam**

LANCASHIRE County Council is offering loans to help and encourage rural business.

The Rural Lancashire Development Fund is loan finance of between £2,000 and £10,000 with repayment reductions offered for those that

reach agreed targets.

County Councillor Tim Ashton, cabinet member for economic development, said: "This is a loan fund that offers additional benefits to businesses who agree in advance certain targets.

"For example if a business states they want to borrow the money to

expand their business which will mean taking on an additional two employees and they reach this target then they could get a reduction in their repayments by up to 50 percent.

"The fund is just one of many projects put in place by the authority to help businesses, both

urban and rural, to start or grow.

"This help is vital during these difficult economic conditions and the county council is putting in place, with its public and private sector partners, as much help, advice and support as possible."

Companies wishing to apply should be an existing limited company or seeking registration.

The fund is administered by the county council through its economic development company Lancashire County Developments (Investments) Limited with business support and advice supplied by Moore and Smalley.

To find out more information contact the Rural Business Support Team on 01772 53 66 00 or send an email to: lcdl.rural@lancashire.gov.uk.

RURAL VIEW | Pendle Hill from Grindleton (Photo by Graham Cooper)



New cycle route

THE Way of the Roses is a new coast-to-coast cycle route that will run between Lancashire and Yorkshire.

Linking the seaside resorts of Morecambe and Bridlington, it will be completed this summer.

The route goes through stunning scenic areas including the Lune Valley,

the Forest of Bowland and the Yorkshire Dales, visiting attractions such as Fountains Abbey and York Minster along the way.

Like other coast-to-coast routes, the Way of the Roses will boost local businesses such as cafes, tearooms and pubs along the fully signed route.

It is being developed by Lancashire County Council, Lancaster City Council, the Lancashire and Blackpool Tourist Board and other partners; working with Sustrans, the sustainable transport charity.

For more information, visit their website: www.wayoftheroses.info



ON THE ROAD | A cyclist on a Lancashire route

Twenty pence tyre test

MOTORISTS are being advised about the perils of driving on tyres with insufficient tread depth.

Alan Fisher, Lancashire County Council's deputy road safety group manager, said: "Checking your tread depth doesn't have to be a hard task. To check your tread, simply insert the edge of a 20p

coin into a tyre's tread grooves. If you are able to see the inside rim of the coin, the tyre tread may be worn close to the legal limit.

"By keeping your tyres at their correct pressures, you can travel further on each tank of fuel, reduce CO2 emissions and stay safer."

The current law states that tyres must have a minimum tread of 1.6mm across the central three quarters of the tyre, around its whole circumference.

Drivers who fail to meet these standards face a fine of up to £2,500 and three penalty points per illegal tyre.

justamin

Scout grant

FYLDE District Scout Council is buying a new projector thanks to £569.88 from Lancashire County Council.

Road safety

NEW build-outs and road markings for the A584 Preston Road, Lytham have been approved by Fylde Lancashire Local.

First aid

A YOUNG person from Fylde is completing a first aid course funded by £120 from Lancashire County Council.

Game on

COUNTY Councillor Stan Leadbetter has given £650 to Thornton 40K to buy games equipment for young people.

Beach Road

A 20MPH zone and traffic calming scheme for the Beach Road area of Cleveleys has been approved.

Grants

SMALL grants for community projects are now available, contact your county councillor for more details.

ON THE RAILS

£100m upgrade is right on track

■ Stephen Axon

UPGRADE work on the tramway in Fleetwood is underway as part of a major £100 million improvement project.

The massive upgrade has been funded jointly

of the project are very clear. It will benefit the whole of the Fylde Coast area.

"Trams have been running to Fleetwood since 1898. This upgrade will ensure the tramway will continue running for

help people travelling with pushchairs, wheelchairs or the less mobile.

The proposed junction improvements between Cleveleys and Fleetwood will improve journey times.

The history of the



RIGHT ON TRACK | An artist's impression of Fleetwood's improved tramway

by the Department for Transport, the county council and Blackpool Council.

Andy Whitlam, transport projects manager, said: "We hope that people will bear with us while this work takes place. It is appreciated that the work does involve some disruption, but the long-term benefits

many years to come.

Businesses in the town will remain open as usual during these essential works to the iconic and popular tramway. Buses will continue to serve the north end of Lord Street, while parking is available in side streets.

A brand new fleet of state-of-the-art trams will provide level boarding to

tramway will also be respected as a fleet of heritage trams will be retained for special events and certain summer services. These will complement the new services - scheduled to begin in Easter 2012.

For more information visit website: www.lancashire.gov.uk/tramwayupgrade.

Park revamp plans



PARK REVAMP | Kirkham's Memorial Park

EFFORTS to revitalise Kirkham Memorial Park have moved a step forward after a masterplan for the area was unveiled.

The Friends of Kirkham Parks believe the area, which covers about 1.8 hectares, has significant

untapped potential.

The support group has ambitious plans to give the park a makeover and introduce improved facilities to make it more attractive to the public. Ideas range from a play area and zip wire, to landscaping

and better lighting and seating.

Group members sought help from Lancashire County Council's Community Design initiative to draw up and consult on plans for the park in partnership with Fylde Borough Council.

BUSINESS NEWS

What a great catch

A WYRE fishing complex is growing thanks to Lancashire County Council's Rural Lancashire Development Fund and Rosebud Finance.

St Michaels-on-Wyre based Briarcroft Fishery already has a touring caravan site and facilities for coarse fishing, but will add self-catering accom-

modation thanks to the additional finance.

Business partner Miles Ward said: "Demand is high for fishing at both of our lakes. With tourists attracted to our facilities and location, because of its beauty and tranquillity, we clearly needed to increase the available accommodation."

County Councillor Tim Ashton, cabinet member for environment and planning, added: "It is great to see Lancashire County Council working with such an entrepreneur and helping a new venture to grow and complement the existing business."

For more information, visit www.lcdl.co.uk.

Residents beware of invoice scam

BUSINESSES, schools and nursing homes in the Fylde are being warned to watch out for bogus invoices claiming to be from directory publisher Yell in relation to its products and services.

Lancashire County Council trading standards has teamed up with Yell to issue the warning about companies impersonating the publisher - particularly those claiming to be behind Yellow Pages and Yell.com.

The scammers seek to mislead Yell customers into signing up to fake advertising contracts which sometimes result in repeated requests for payment by phone. Trading

standards is also concerned that some people may be duped into thinking they are taking out Yell advertising or renewing existing advertising programmes.

Bogus order forms are



BEWARE OF INVOICE SCAM | County Councillor Albert Atkinson

sent by e-mail or fax and contain look-alike "Yellow Pages" branding. Customers who return the form subsequently receive invoices and requests for payment.

County Councillor Albert Atkinson, deputy leader of the county council, said: "Yell customers should be particularly alert to any correspondence they receive containing contact or bank account details in Holland or Germany."

Anyone receiving contact from these traders or anyone similar should ignore any order forms and not pay any invoices. They should contact Consumer Direct for advice on 08454 04 05 06.

TellyTalk time at Fleetwood library

PEOPLE in Wyre can get face-to-face advice on county council services thanks to new technology at Fleetwood Library.

Using webcam-style technology, the new TellyTalk system allows peo-

ple to contact one of the county council's customer service staff.

The screen allows the people to see and also talk to each other. They can then ask questions and applications, such as those for a Blue

Badge, can be made.

County Councillor Clive Grunshaw (Fleetwood East) said: "Some of our residents still prefer to deal with a person face-to-face. This system means that they can do just that."

Lancashire Adult Learning

New Courses are Starting in Your Area Soon

A whole new programme of adult learning courses will be starting near you in April. A wide range of courses are available in subjects such as IT, Arts & Crafts, Healthy Living and Languages.

Also FREE* taster sessions will also be offered at venues across Lancashire as part of National Adult Learners' Week between 15th and 21st May 2010.

Whether you want to gain a new skill for work, develop an interest in a subject, or just take part in one of these opportunities, call now for information or advice:

Preston, Lancaster, Fylde, Wyre:
01524 581269

Chorley, West Lancashire, South Ribble, Burnley, Hyndburn, Pendle, Ribble Valley, Rossendale:
0845 600 1331

Or visit our website
www.lancashire.gov.uk/adultlearning

*Maximum of two FREE courses per learner – providing you have not attended a course run by Lancashire Adult Learning since August 2009.





justamin

Ceremonies

REGISTRY offices in Chorley and Ormskirk will be open for Sunday ceremonies from 4 April 2010.

Childs play

COUNCILLOR Carolyn Evans has provided a £600 grant to Mossy Lea Primary School PTFA for new children's play facilities.

Splash out

ORMSKIRK Amateur Swimming Club has been presented with a £250 grant from County Councillor Rob Bailey.

Forum boost

COUNTY Councillor Terry Brown has provided a £340 grant to Chorley based Saheliyaan Asian Women's Forum.

Slow down

COUNTY Councillor Mike Otter has donated £760 from his parish champion's fund to buy a speed indicator for Bretherton.

ROAD SAFETY

£2m increase for safer roads in Chorley

■ Rob Bywater

LANCASHIRE County Council is working hard to improve road safety for drivers and pedestrians throughout Chorley.

Since April last year, more than £2 million has been invested in a number of schemes including 20mph zones, traffic calming schemes and pedestrian crossings.

Projects to improve safety for pedestrians include installation of a new puffin crossing - which makes it easier for visually impaired people to cross - on Chorley Bypass near Clifford Street.

A zebra crossing has also been installed on St Thomas's Road at the side of Chorley Town Hall.

There have also been a number of schemes to tackle speeding traffic including large vehicle activated 'slow down' signs at nine locations including Adlington, Charnock Richard and Coppull.

Traffic calming schemes have been introduced on Sheephill Lane, Clayton-le-Woods and Liptrott Estate, Chorley.

In addition, resurfacing work and pothole repairs have been carried out on a number of roads throughout the borough.

County Councillor Keith Young, cabinet member for highways and transport, said: "These schemes should make roads much safer for drivers and pedestrians.

"We've worked closely with Chorley Council and 22 parish councils to prioritise work that will improve safety for vulnerable road users such as children, disabled people and cyclists.

"We're also carrying out an ongoing programme of pothole repairs and there are even more improvements in the pipeline."

Hitting high notes

BUCKSHAW Youth Band is continuing to bring magical music to the people of Chorley thanks to a grant from Lancashire County Council.

County Councillor Mark Perks has donated a £300 grant to the band to buy new percussion instruments.

These instruments will be used to play charity concerts in local schools and care homes across Chorley.

Sally Ogden who helps to run Buckshaw Youth Band, said:

"We're looking to grow and recruit more young musicians all the time and County Councillor Perks' grant for new

instruments is a great boost."

For more information, contact Peter Ogden on 01257 411926.



HIGH NOTES | County Councillor Perks with Buckshaw Youth Band

FOOD FOR THOUGHT

Green fingers take to the garden

CHILDREN from primary schools across West Lancashire are being encouraged to dust down their gardening gloves as part of a new community food campaign.

The West Lancs Community Food Growing project, run by the Council for Voluntary Services (CVS) and other partners, aims to encourage residents to eat more healthily by growing their own fruit and vegeta-

bles at allotment sites across the borough.

The school project is being led by Lancashire County Council's extended services team and The Red Apple Community Trust, who are working in partnership with the CVS to support 18 primary schools in the district to develop food growing after-school clubs.

Raised beds are now

being installed in these schools enabling children to grow their own food.

County Councillor Susie Charles, cabinet member for children and schools, said: "We want to do all we can to encourage schoolchildren to eat healthily and are pleased to support this innovative project."

For more information, contact the CVS on 01695 733737.

Library gets down with the kids

A NEW space where young people can go to relax, socialise or study is opening its doors at Skelmersdale Library this month.

The Crib@Skelmersdale is a set of specially designed rooms offering a range of activities for 14 to 25 year olds - the age group who are least likely to use libraries.

Young people will be able to study, read, play games or make music using state-of-the-art equipment.

Stewart Parsons, cultural youth project offi-

cer, said: "This project is all about giving young people what they want to encourage them to visit their library. We've tried to get the look and feel of the rooms right to make

the Crib@Skelmersdale an inviting and cool place."

For more information, log on to Skelmersdale Library's Facebook page.



CRIB@SKELMERSDALE | Artist's impression

Grants

SMALL grants for community projects are now available, contact your county councillor for more details.

Tax scam warning

CHORLEY residents are being urged to be on their guard against telephone fraudsters.

Lancashire County Council's trading standards service issued the warning following sev-

eral complaints about cold-calling scammers operating in the area.

These fraudsters call residents at random and falsely advise them their council tax band has been downgraded and that

they are due back pay. The callers ask for personal details including bank account numbers and sort codes.

However, consumers should be careful not to answer any such questions.

Jim Potts, Lancashire County Council's chief trading standards officer, said: "We would like to stress that these phone calls have no connection whatsoever with the district councils and their council tax collection functions.

"Residents are advised to terminate all such calls immediately."

People should report any attempted scam to Consumer Direct on 08454 040506.



BE ON YOUR GUARD | Trading standards chief Jim Potts

Lancashire Adult Learning

New Courses are Starting in Your Area Soon

A whole new programme of adult learning courses will be starting near you in April. A wide range of courses are available in subjects such as IT, Arts & Crafts, Healthy Living and Languages.

Also FREE* taster sessions will also be offered at venues across Lancashire as part of National Adult Learners' Week between 15th and 21st May 2010.

Whether you want to gain a new skill for work, develop an interest in a subject, or just take part in one of these opportunities, call now for information or advice:

Preston, Lancaster, Fylde, Wyre:
01524 581269

Chorley, West Lancashire, South Ribble, Burnley, Hyndburn, Pendle, Ribble Valley, Rossendale:
0845 600 1331

Or visit our website
www.lancashire.gov.uk/adultlearning

*Maximum of two FREE courses per learner - providing you have not attended a course run by Lancashire Adult Learning since August 2009.

justamin

Buckshaw

BUCKSHAW Youth Association has been boosted by a £250 grant from County Councillor Mike France.

On song

LEYLAND One Voice Choir is buying a new radio microphone thanks to a £378.80 grant from County Councillor Mike Otter.

Park life

COUNTY Councillor Tony Pimblett handed £400 to the Friends of Hurst Grange Park to buy a new projector.

Guides grant

3RD Leyland St Ambrose Guides are installing a new gas boiler with the help of a £200 grant from Councillor Mike Otter.

Ceremonies

LANCASHIRE County Council's Preston Registry Office will be open for Sunday ceremonies from 4 April 2010.

Garden club

LEA Endowed CE School gardening club is buying a new shed with the help of £250 from County Councillor Bill Winlow.

ON YOUR BIKE

£1.5m invested in Preston's Guild Wheel

■ Rob Bywater

PRESTON'S Guild Wheel cycling route has been given a huge boost following the news that Lancashire County Council is investing £1.5 million in the scheme.

The plans were rubber-

a 21-mile greenway for people of all abilities. It will be used for recreation, accessing the countryside and travelling around the city.

The scheme will also develop a green corridor for wildlife.

County council leader

"The 2012 Guild promises to be a spectacular celebration of Preston's history and heritage and I'm pleased to work with the city council on this scheme."

Although the exact route for the Guild Wheel has not been finalised, it



ON YOUR BIKE | An artists impression of Preston Guild Wheel

stamped last month as part of the county council's 2010/11 budget.

The county council is leading the scheme in partnership with Preston City Council and other partners in the run up to the Preston Guild in 2012.

The Guild Wheel will be

Geoff Driver said: "The Guild Wheel promises to be one of the main cycling routes in the country."

"It will be a superb place for people to come and enjoy and it provides a more environmentally friendly way of getting around the city."

will take in many of Preston's major landmarks including Avenham Park, the Ribble Link and the docklands.

Preston Guild dates back to 1179, when King Henry II granted the town its first royal charter. It is celebrated every 20 years.

Fair play boost for Much Hoole kids

LANCASHIRE County Council has approved funding to provide new play facilities at Dob Lane, Much Hoole.

The £47,000 scheme will involve siting new junior play facilities be-

tween the existing toddler and ball play areas. Final decisions on the equipment to be installed have still to be made.

The county council's funding has been provided under the Play-

builder 'fair play' initiative, which aims to develop up to 25 play spaces across Lancashire. The rest of the funding is expected to come from South Ribble Borough Council.

BUSINESS NEWS

Fishing for success

A PRESTON fishing firm is now flourishing with finance and funding from Lancashire County Council.

Langleys Lakes Limited has secured finance through the Rosebud scheme and funding through the Rural Lancashire Development programme.

Director Ann Almond said: "We want to provide a location for the North West angling community that is as natural as possible."

"We have identified the land in rural Preston which will serve as an ideal location to do this whilst still being easily reached via our motorway network from our region and further afield."

Provided by Lancashire County Developments Ltd (LCDL), the county council's economic development department, Rosebud provides loans and equity funding from £5,000 to £750,000 to

businesses that qualify.

Rural Lancashire entrepreneurs can receive help through LCDL's Rural Lancashire Development Fund.

For more information, visit www.lcdl.co.uk.



FISHING FOR SUCCESS | Mark Almond (left), business co-director; Ann Almond, director; and County Councillor Tim Ashton

Growing new skills at Worden Park

PEOPLE from across South Ribble are growing new skills thanks to a groundbreaking project in Leyland.

Worden Park Horticultural Project is led by Brothers of Charity Services and supported by Self Unlimited, Lancashire County Council and other

organisations through the South Ribble Partnership.

The project is based in the historic Walled Garden of Worden Park and supports people with learning disabilities who grow vegetables and flowers which are then sold to park visitors.

The project also aims

to encourage other community groups and park visitors to use the Walled Garden through activities and events to promote healthy lifestyles and make people more aware of environmental issues.

Project coordinator Ann Jones said: "We're pleased with the success of this unique project and the close work of all partners through the South Ribble Partnership."

"People with learning disabilities have had great use of these community facilities, learned many new skills and integrated with local people on the park."

For further information, call 07834 480375 or visit www.brothersofcharity.org.uk.



GROWING NEW SKILLS | Worden Park walled garden

Our future leaders

ASPIRING female community leaders have received practical help and support from Lancashire County Council.

Around 22 women, including many from Preston, took part in the council's community leadership skills course.

During a varied seven

week programme they learnt about chairing meetings, team building, public speaking, assertiveness and communication to promote community cohesion.

The aim was to improve the leadership skills of local Muslim women and develop the work of

women's organisations in the county.

County Councillor David Smith, lead member for community services, said: "This course helped women from across Lancashire to develop their skills which should benefit their communities in the future."

Lancashire Adult Learning

New Courses are Starting in Your Area Soon

A whole new programme of adult learning courses will be starting near you in April. A wide range of courses are available in subjects such as IT, Arts & Crafts, Healthy Living and Languages.

Also FREE* taster sessions will also be offered at venues across Lancashire as part of National Adult Learners' Week between 15th and 21st May 2010.

Whether you want to gain a new skill for work, develop an interest in a subject, or just take part in one of these opportunities, call now for information or advice:

Preston, Lancaster, Fylde, Wyre:
01524 581269

Chorley, West Lancashire, South Ribble, Burnley, Hyndburn, Pendle, Ribble Valley, Rossendale:
0845 600 1331

Or visit our website
www.lancashire.gov.uk/adultlearning

*Maximum of two FREE courses per learner – providing you have not attended a course run by Lancashire Adult Learning since August 2009.

justamin

Kitchen grant

IRWELL Vale Methodist Church is buying new kitchen facilities with £250 from County Councillor Darryl Smith.

On song

ROSSENDALE Community Choir is being created with the help of £390 from County Councillor Tony Winder.

Helmshore

HELMSHORE Pensioners' Treat is providing community events thanks to £340 from County Councillor Peter Evans.

Spade work

MILNSHAW Residents' Association is buying gardening equipment with £150 from County Councillor Malcolm Pritchard.

Great outdoors

COUNTY Councillor Miles Parkinson has provided £200 to Prospects Foundation to buy outdoor equipment for local children.

Ceremonies

LANCASHIRE County Council's Accrington Registry Office will be open for Sunday ceremonies from 4 April 2010.

QUESTION TIME

Local school pupils quiz education chief

■ Andy Swain

CHILDREN from Hyndburn schools recently visited County Hall to quiz a senior county councillor about services provided in their schools.

This visit was part of Lancashire County Council's consultation into a proposed re-organisation of special school provision for children and young people with learning difficulties in Hyndburn.

Questions from the children, who were representatives from their respective school councils, covered everything from transport to whether they would keep the same teachers.

Reorganisation proposals include: close North Cliffe School on 31 August 2011; re-designate White Ash School as a community special school on 1 September 2011 cater-



QUESTION TIME | County Councillor Susie Charles with pupils from Hyndburn special schools

ing for 70 boys and girls between the ages of two and 11 with learning difficulties; and re-designate Broadfield School as a community special school on 1 September 2011 catering for 130 boys and girls between the ages of 11 and 19 with learning difficulties.

County Councillor Susie Charles, cabinet member for children and schools who took the questions, said: "We are in the mid-

dle of a consultation process on the proposed reorganisation so it was great for the children and young people most directly affected to have the opportunity to raise their concerns and to share their wishes for their education and well-being for the future.

"They were very thoroughly prepared for the meeting and I hope they found it as useful as I did."

All in good taste

HELMSHORE Mills Textile Museum has recently been presented with a prestigious Taste Lancashire Award for its commitment to selling local produce.

The award, presented by the Lancashire and Blackpool Tourist Board, also recognises the high standard of food and drink sold in the café.

Located within the museum, the café is a great place to sit back and relax in a beautiful setting, while enjoying some of the finest local, home-cooked food in the county.

Louise Jacobsson, assistant keeper, said: "We offer a range of delicious homemade food from our 'Specials'

menu to afternoon tea. "The award just goes to show the quality of our food and we'd encourage anyone to come along, sample some

superb local food and have a look round the museum."

For more information, visit www.lancashire.gov.uk/museums.



AWARD WINNER | Helmshore Mills museum café

COMMUNITY NEWS

Future leaders

ASPIRING female community leaders have received practical help and support from Lancashire County Council.

Around 22 women, including many from Accrington, took part in the council's leadership skills course.

During a varied seven

week programme they learnt about chairing meetings, team building, public speaking, assertiveness and communication to promote community cohesion.

The aim was to improve the leadership skills of local Muslim women and develop the

work of women's organisations.

County Councillor David Smith, lead member for community services, said: "This course helped women from across Lancashire to develop their skills which should benefit their communities in the future."

Birthday reunion

A PRIMARY school is looking forward to celebrating its centenary with a host of Edwardian themed events.

Past pupils and teachers of Northern Primary School, Burnley Road, Bacup, are being invited to a special reunion next June and a week of activities next July will culminate in an Edwardian school day and an Edwardian Garden Party.

Headteacher Jane Simpson said: "It is going to be a very exciting year at Northern. We have

already had an assembly to introduce the anniversary to the children who have come up with some excellent ideas to help us celebrate."

Anyone wanting to share their experience of school life at Northern for the project is invited to contact the school on 01706 874154.



BYGONE TIMES | A photograph of Northern Primary School from 1921

Environment award scoop in Rossendale

A CUTTING-edge business development in Rossendale has received a national environmental award.

Rising Bridge Business and Enterprise Village, Rawtenstall has been awarded a 'very good' rating by Building Research Establishment's Environmental Assessment Method (BREEAM) for environmental improvements included in the scheme.

These include plans to create a new wildlife corridor and education area

on the shared boundary with St John's C of E Stonefold Primary School.

The development will also include native tree and shrub species and wildflowers to attract a variety of wildlife.

Rising Bridge Business and Enterprise Village is a £7 million development to create 32,000 square feet of high quality business space.

County Councillor Tim Ashton, cabinet member for environment and planning, said: "Consider-

ation for the environment and the creation of a natural landscape for the future have always been important elements of this project. This has been demonstrated by the BREEAM rating we have achieved."

Rising Bridge is a joint venture between Lancashire County Developments Ltd - the county council's economic development department, Rossendale Borough Council and the North West Development Agency.



Lancashire Adult Learning

New Courses are Starting in Your Area Soon

A whole new programme of adult learning courses will be starting near you in April. A wide range of courses are available in subjects such as IT, Arts & Crafts, Healthy Living and Languages.

Also FREE* taster sessions will also be offered at venues across Lancashire as part of National Adult Learners' Week between 15th and 21st May 2010.

Whether you want to gain a new skill for work, develop an interest in a subject, or just take part in one of these opportunities, call now for information or advice:

Preston, Lancaster, Fylde, Wyre:
01524 581269

Chorley, West Lancashire, South Ribble, Burnley, Hyndburn, Pendle, Ribble Valley, Rossendale:
0845 600 1331

Or visit our website
www.lancashire.gov.uk/adultlearning

*Maximum of two FREE courses per learner – providing you have not attended a course run by Lancashire Adult Learning since August 2009.



justamin

Future's bright

NEW lighting will brighten up Newton-with-Bowland Village Hall thanks to a £400 grant from County Councillor David Smith.

Chipping in

LANCASHIRE Adult Learning is providing Russian classes for Chipping residents looking after children from Chernobyl.

Pedal power

A £300 grant from County Councillor Alan Knox is allowing a Clitheroe Bike Club member to receive coaching training.

Ceremonies

CLITHEROE and Lancaster registry offices will be open for Sunday ceremonies from 4 April 2010.

Road safety

LANCASHIRE County Council has transformed Branksome, Morecambe into a 20mph zone to boost road safety.

Tables turn

A £300 grant from County Councillor Ken Brown means Morecambe and Heysham Scouts can buy new camping tables.

Sand-tastic

SILVERDALE Playgroup is to buy a large sandpit with a £200 grant from County Councillor Sarah Fishwick.

ON THE ROAD

Heysham M6 Link road scheme moves forward

■ Rob Bywater

PLANS to build a new road linking the towns of Heysham and Morecambe to the M6 are moving forward.



ON THE ROAD | Heysham M6 Link route

The road is the second phase of the Heysham M6 link and will reduce congestion, improve air quality in nearby towns and help regenerate the local economy.

County Councillor Keith Young, cabinet member

for highways, said: "This road is vital to Lancaster in terms of relieving congestion and boosting the local economy."

"It is a substantial in-

vestment and I am very confident that the money will be well spent for the benefit of the local area."

Following the advertising of the compulsory purchase order and side road order, the secretary of state has decided to

hold a public inquiry into the scheme.

Steve McCreesh, project manager, said: "The public inquiry will focus on changes to existing roads and accesses and the land required for the scheme."

"We always expected another public inquiry and this is likely to be held in the Lancaster area in the summer."

Meanwhile, the county council is still moving forward with the other procedures with construction of the link road due to begin in 2011.

At the time of writing, the county council is in the process of selecting a contractor to carry out the work.

The tendering process opened in December 2009 with seven firms being shortlisted.

For more information on the project, visit www.lancashire.gov.uk/environment.

Water success

A RIBBLE Valley bottled water business has become one of many firms to secure support through Lancashire County Council's Rosebud Finance scheme.

The business, called King Henry VI Spring Water, sells spring water from its base on the Bolton Hall Estate, Bolton-by-Bowland.

Company director Chris Bosonnet said: "The water is piped from a specially constructed borehole to a bottling plant, which has been converted from a redundant farm building."

"It has an interesting history as King Henry VI actually founded a well on the Bolton Hall Estate in 1464."

Provided by Lancashire County Developments Ltd, the county council's economic development department, Rosebud provides loans and equity funding for any amount from £5,000 to £750,000 to businesses that qualify.

For more information, visit www.lcdl.co.uk.

ENVIRONMENTAL NEWS

The future's green



GOING GREEN | County councillors, officers and Halton residents visit the centre

A LANCASTER community centre is undergoing a major refurbishment with help from Lancashire County Council.

The project to breathe new life in to Halton Community Centre involves a two-storey extension with additional meeting

rooms, a café and IT suite.

There will also be installation of a solar-powered hot water system, a ground source heat pump and rainwater recycling facility.

The £750,000 development has been partly funded by a £500,000

grant from the county council's Lancashire Environmental Fund.

The fund provides landfill tax grants for a wide range of environmental and community projects.

For details about the fund call 01772 538143.

It's blooming great

MORE than 4,000 snow-drop flowers have been planted in the Ribble Valley village of Hothersall thanks to a grant from Lancashire County Council.

County Councillor Mike Otter, parish champion has donated £150 from his fund to Hothersall Parish Council.

He said: "Hothersall is a popular village and the parish council is putting in a lot of hard work to make it even more attractive to local residents and visitors."

"The bulb planting is an important part of this and I'm pleased to fund this project."

George Turner, clerk of

Hothersall Parish Council, said: "Not only will the plants come back year in, year out, they will also spread across the green areas of the town making it look and feel much brighter."

"I am pleased that Councillor Otter is supporting this important project."

Council tax phone scam warning

RIBBLE Valley residents are being urged to be on their guard against telephone fraudsters.

Lancashire County Council's trading standards service issued the warning following several complaints about cold-calling scammers operating in the area.

These fraudsters call residents at random and falsely advise them their

council tax band has been downgraded and that they are due back pay. The callers ask for personal details including bank account numbers and sort codes.

However, consumers should be careful not to answer any such questions and should never give personal details over the phone.

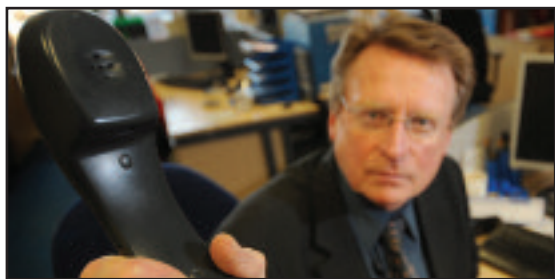
Jim Potts, Lancashire

County Council's chief trading standards officer, said: "We're worried about the spate of unsolicited telephone calls requesting personal information, and would like to stress that these phone calls have no connection whatsoever with the district councils and their council tax collection functions."

"Residents are advised to terminate all such calls immediately."

If anyone has given details in response to one of these calls, they should contact the relevant credit card company or bank.

People should report any attempted scam to Consumer Direct on 08454 040506.



BEWARE OF TAX CON | Trading standards chief Jim Potts

Lancashire Adult Learning

New Courses are Starting in Your Area Soon

A whole new programme of adult learning courses will be starting near you in April. A wide range of courses are available in subjects such as IT, Arts & Crafts, Healthy Living and Languages.

Also FREE* taster sessions will also be offered at venues across Lancashire as part of National Adult Learners' Week between 15th and 21st May 2010.

Whether you want to gain a new skill for work, develop an interest in a subject, or just take part in one of these opportunities, call now for information or advice:

Preston, Lancaster, Fylde, Wyre:

01524 581269

Chorley, West Lancashire, South Ribble, Burnley, Hyndburn, Pendle, Ribble Valley, Rossendale:

0845 600 1331

Or visit our website

www.lancashire.gov.uk/adultlearning

*Maximum of two FREE courses per learner – providing you have not attended a course run by Lancashire Adult Learning since August 2009.



justamin

Winter warmth

A £160 grant from County Councillor Mohammed Iqbal is being used to buy a radiator by Pendle Martial Arts Academy.

How's that

BARNOLDSWICK Cricket Club youngsters are getting new safety equipment thanks to £250 from Councillor Keith Bailey.

Safe wheels

WHEELS Within Wheels has been awarded £350 by County Councillor Iqbal to teach young people about road safety.

Skills boost

ASPIRING female community leaders from Pendle have received training on the county council's community leadership course.

Pedal power

A BMX track for young people in Worsthorne has been developed with support from Lancashire County Council.

Bus stops

THE bus stop near the Rose and Crown, Manchester Road in Burnley will be revamped by the county council.

ON THE AIR

Any Questions comes to town

■ Rob Bywater

BURNLEY'S Thomas Whitham Sixth Form was the venue for one of the country's most popular topical debate programmes.

Radio 4's Any Questions, which has been captivating listeners for more than 60 years, was broadcast live from the town last month. Around 240 people packed into the auditorium to take part in a lively debate chaired by Shaun Ley, presenter of Radio 4's The World At One.

The panel included Kelvin MacKenzie – former editor of The Sun, Sir Christopher Frayling – professor emeritus of cultural history at the Royal College of Art, Baroness Afshar – professor of politics and women's studies at York University, and Paul Nuttall – chair of the UK Independence Party.

Use of torture by the secret services, provision of care for elderly people and the death tax were

some of the issues under the spotlight.

Headteacher Stuart Smith, said: "It was a really up-beat lively show

really put Burnley on the map."

Hilary Buchanan, the programme coordinator, said: "It turned out to be a



THE PANEL | Baroness Afshar, Christopher Frayling, Kelvin MacKenzie and Paul Nuttall

with thought-provoking and well-articulated points of view. Our students really enjoyed helping out on the night and the producers were impressed by their contribution. Events like this

really lively programme with brilliant questions from the audience who were vocal, engaged and up-for-it."

The sixth form is part of the state-of-the-art Burnley Campus complex.

Power to the people

THE keys to a new home for one of Burnley's most active community groups have been handed over by Lancashire County Council.

The former library on Colne Road has been leased at the cost of £1 a year to Thursby Garden Community Action Group – volunteers who help local people to find jobs and achieve their potential in education.

The former library will also house staff from the East Lancashire Primary Care Trust and Burnley Borough Council.

Group chair Richard Chipps said: "Having a place to meet and carry out activities will put us

on a much firmer footing and means we can do more for people in this area."



KEYS HANDOVER | Council leader Geoff Driver and Richard Chipps

LIGHT NEWS

Green street lamps

LANCASHIRE County Council has installed new high-tech street lighting across Pendle in a bid to reduce carbon emissions.

More than 750 LED lights have been fitted on streets in Nelson, Colne, Earby, Barnoldswick and Barrowford.

This is part of a drive to reduce street lighting carbon emissions by 30% across the county over the next five years.

By employing new technologies, including

the use of LED lighting, the county council expects to make annual savings of over £2 million, based on current prices.

Martin Dunwell, street lighting manager, said: "The county council aims to achieve the reduction in energy consumption by introducing variable lighting levels, electronic equipment, more accurate switching, replacement of illuminated signs with reflective versions and the use of LEDs."

The initiative to reduce energy consumption should result in a number of benefits, including lower carbon emissions and less light pollution. The new equipment should also be more reliable, resulting in fewer faults and reducing the number and cost of repairs.

Around £360,000 is expected to be invested in the street lighting carbon reduction programme in the Pendle district in 2009-10.

Fuel poverty help

LANCASHIRE County Council has recruited new officers to help tackle fuel poverty across Burnley and Pendle.

The review, assessment and support officers identify people at risk of fuel poverty when carrying out reviews of service provision.

This is a 12 month pilot

scheme which runs until October 2010. Officers target vulnerable people aged 65 and over who are already in receipt of support from the county council.

County Councillor Mike Calvert, cabinet member for adult and community services, said: "Most people go about their busi-

ness without having to worry about issues such as how to heat their home - but for some - particularly elderly people with health problems, it's a major concern.

"The fuel poverty officers will have a key role identifying people struggling to pay their fuel bills."

Bringing Pendle's landscape to life

LOCAL children have been busy finding out more about the history of Pendle Hill.

They took part in a special workshop in January where they created ceramic tiles depicting the local landscape.

The workshop was part of Landscape Stories, a project which aims to bring to life the history of the landscape in the Pendle area.

This scheme has also seen local primary schoolchildren recreate their own classroom archaeological dig.

Project coordinator Sandra Silk said: "It's important that we teach local children about the area they live in and

they've been having great fun sculpting artefacts, going on history walks and much more."

Landscape Stories is run by the Forest of Bow-

land Area of Outstanding Natural Beauty team and supported by partners including Lancashire County Council, the Heritage Lottery Fund and Grassroots.



CERAMIC PAINTING | Bringing history to life

Lancashire Adult Learning

New Courses are Starting in Your Area Soon

A whole new programme of adult learning courses will be starting near you in April. A wide range of courses are available in subjects such as IT, Arts & Crafts, Healthy Living and Languages.

Also FREE* taster sessions will also be offered at venues across Lancashire as part of National Adult Learners' Week between 15th and 21st May 2010.

Whether you want to gain a new skill for work, develop an interest in a subject, or just take part in one of these opportunities, call now for information or advice:

Preston, Lancaster, Fylde, Wyre:

01524 581269

Chorley, West Lancashire, South Ribble, Burnley, Hyndburn, Pendle, Ribble Valley, Rossendale:

0845 600 1331

Or visit our website

www.lancashire.gov.uk/adultlearning

*Maximum of two FREE courses per learner – providing you have not attended a course run by Lancashire Adult Learning since August 2009.



Joint Lancashire Transport Plan 2011-2021

We need transport to get to the shops or visit friends.
Our transport could be better than that.

Lancaster and Black produce a joint product out of how the court

Transport helps make our a
Effective transport will sup
envi



Cut along here

We want your views.

For each goal we have identified the following challenges.

We want to know whether you think these are important too.

Please tick a box to indicate what priority for action you would give each.

1 = highest priority and 5 = lowest priority

Economy: Challenges

Poor highway network makes travel and transport difficult

Cost of delay from congestion to local business

Slow delivery and occupation of employment sites

Slow delivery of new housing

Difficult access between residential areas and employment opportunities

Quality of travel and ease of accessibility for visitors

Carbon Emissions: Challenges

High level of carbon emissions

High dependency on cars for personal travel

Movement of goods required to meet the population's preferred lifestyles

The distance travelled to access or deliver goods and services

Effect of extreme weather on the transport system

Equality of Opportunity: Challenges

People need the skills to support the future economy

Travel and accessibility difficulties contribute to inequalities, particularly in health

The needs of different social groups may mean that they do not have fair access to key services

There is a growing ageing population with specific transport needs

People in isolated communities suffer poor access to services and social networks

Limited awareness of travel opportunities is restricting people's life chances

[illegible]

to work or school, go
- it's crucial to our lives.
tter and we all know
big challenges lie ahead.

Lancashire County Council, Blackpool Council
Blackburn with Darwen Borough Council will
Joint Lancashire Local Transport Plan setting
Councils will manage transport across our area.

The Vision

area a great place to live, work and play...
support a sustainable social, economic and
environmental future.

Five key goals to achieve this vision:

- 1. Supporting economic growth.
- 2. Reducing carbon emissions.
- 3. Promoting equality of opportunity.
- 4. Providing better safety and security.
- 5. Improving quality of life, health and the natural environment.

To achieve these goals:

We will secure a strong economic future by making transport
and travel more efficient.

We will reduce carbon emissions to help achieve a low-carbon and
resilient transport system.

We will improve life chances and achieve a fairer society by improving
access to key services and opportunities.

We will enable people to travel safely and reach the services they
need and the opportunities that help them succeed.

We will create more liveable communities by making
transport less intrusive and more sustainable.

Safety and Security: Challenges

- Road casualties
- Road casualties amongst children
- Road casualties in areas of disadvantage
- Passengers using public transport may encounter vandalism and antisocial behaviour
- People feel at risk of crime in some public spaces, particularly at night

Quality of Life: Challenges

- The gap between the most and the least disadvantaged people and communities
- Low quality streets and footways reduce quality of life and make journeys difficult
- Fear of traffic deters change to walking and cycling
- Impact of traffic, including noise and air pollution, can reduce people's wellbeing
- Impact of traffic can reduce community cohesion and social inclusion

1	2	3	4	5

Have you any additional comments?

To help us understand the
background of individuals
responding to this consultation,
it would be useful to see how
responses vary between groups
and areas. We will not use this
information for any other
purposes.

Your Home Post Code

Cultural & Ethnic Origin

I would describe my cultural &
ethnic origin (recent forebears/
country of origin/cultural identity) as:

Asian or Asian British

- ☐ Bangladeshi
- ☐ Indian
- ☐ Pakistani
- ☐ Any Other Asian background

Mixed

- ☐ White and Asian
- ☐ White and Black African
- ☐ White and Black Caribbean
- ☐ Any other mixed background

Black or Black British

- ☐ African
- ☐ Caribbean
- ☐ Any other Black background

White

- ☐ British
- ☐ Irish

Chinese

- ☐ Chinese

Other Ethnic Group

Other (Please specify e.g. Romany)

Gender

Please indicate your gender

- ☐ Male ☐ Female

Disability

Do you consider yourself to have a disability?

- ☐ Yes ☐ No

Age

What age on your last birthday?

Sexual Orientation

Please indicate your sexual orientation

- ☐ Bisexual ☐ Gay ☐ Heterosexual/straight
- ☐ Other ☐ Prefer not to say

Please return this questionnaire by
August 31st 2010 - **no stamp is required.**

Lancashire County Council
LTP Consultation
FREEPOST PR89
PO Box 100
County Hall
PRESTON PR1 0BR

All personal details will be treated confidentially
and will not be passed on to any third parties.

If you would like to be informed of the progress and other
future consultation events regarding the Joint Lancashire
Local Transport Plan, please give your details below;

Name

Address

Postcode

Email

Library 'book worm'

A new chapter is beginning for libraries. If you haven't been into your local library for a while, the contents might look somewhat different to how you remember them.

WHAT comes to your mind when you think of a library? A quiet dusty place where people tut at the first sign of people enjoying themselves?

That stereotype might have been true once, but things are changing in Lancashire's libraries. In the past couple of years, 20 of the county's 74 libraries have undergone an enormous transformation; 19 have been refurbished or partially refurbished and one is a new building.

By the end of April, self service machines will have been installed in 10 libraries. Like machines that are now common place in many supermarkets and other shops, they allow library users to easily check out, renew and return their own items. This frees up staff to deal with enquiries and other activities.

Pioneering developments in libraries also include working closely with Sure Start to provide customised services for families.

The Living Book initiative, which allows

customers to 'rent' a real person who tells his or her own story. The living books, who are volunteers from each area, will give a fascinating insight into their lives sharing inspirational tales, local history and cultural knowledge; interesting experiences, unusual hobbies and much more.

While libraries retain some traditional aspects - books will always be the core business - they are now much more focused on providing services that meet the needs and expectations of local communities.

In Haslingden, the local library has been completely renovated. Lancaster and Colne Libraries have also benefited from the Big Lottery Fund.

Thanks to a lottery grant £1.3m, there's a new community history library and flexible space that can deliver a range of traditional and new services.

The newly-built Heysham library shows the direction the service is moving. The new



NEW LOOK | Shelves at Ormskirk Library

building, funded by the county council, offers a wide range of facilities for the community.

Flexible shelving means space can be created for people to hold meetings or events. There's also a meeting room with an interac-

tive white board, kitchen and toilet facilities.

Following investment of £1.9m, a further eight libraries have been modernised.

Maybe it's time to take another look at your local library.

Looking ahead with eye on past

MUSEUM visitors will experience the sounds and smells of a World War One trench as part of a new attraction at the Museum of Lancashire.

Starting in April, an extensive £2 million renovation of the museum will create seven new interactive galleries, a shop, a café and improved access for disabled people.

The refurbishment, due for completion in May

2011, will include improved lighting, new windows and cleaning of the stonework.

It is funded by Lancashire County Council and the Heritage Lottery Fund.

County Councilor Mike Calvert, cabinet member for adult and



community services, said: "The plans for the museum are truly inspiring: I am looking forward to the new atmospheric walk through the World War One trench with its sounds, smells and film.

"Visitors will also be able to see objects that have never been on display before."



TECHNOLOGY | A self service machine

wecanhelp

OFFICIAL figures just released show that thousands of people in Lancashire are missing out on housing and council tax benefits every year, says Jim Dickson, head of Lancashire County Council's Welfare Rights Service.

Many of these people wrongly think they can't claim because somebody in their household is working full-time.

Only about half of people in work who could claim Housing Benefit, to help with their rent, actually do so; missing out on an average £46 a week in benefit.

And people who rent privately are much more likely to lose out.

Many people, particularly the over 60s who own their own home, don't claim Council Tax Benefit because they wrongly believe that the value

of their home counts against them. You can also get a leaflet 'Help with your Housing Costs' by calling the Welfare Rights Service on 0845 053 0013 or write to us at Welfare Rights Service, FREE POST, Preston PR1 8BR.

Or contact your local council for more information and to make a claim.



Thousands of people in Lancashire are missing out

of their home counts against them.

As a result many homeowners are missing out on rebates they are entitled to receive.

To check whether you could be entitled to Council Tax or Housing Ben-

efit by visiting the website: www.direct.gov.uk/benefitsadviser.



Jim has the answer

Head of the Welfare Rights Service

Helping you to find out about benefit entitlement.

Reducing

■ Greg Bowen

A LANCASHIRE campaign to spread messages on safer sleep for infants could soon have a nationwide impact.

Lancashire County Council's innovative and hugely successful 'Give Me Room to Breathe' campaign was launched in 2008 to highlight the risks associated with unexpected death in infancy.

The campaign is endorsed by Lancashire Safeguarding Children Board and led by the

county council's Sure Start Early Years and Childcare Service.

The campaign is run in partnership with the police, health services and Children's Centres.

'Give Me Room to Breathe' warns that the risks of infant death are higher if parents fall asleep with their baby, particularly if the parents are very tired, have recently used alcohol or drugs, whether prescribed or recreational, or are smokers.

For the first six

85

Libraries and mobile libraries
across Lancashire



Libraries in Lancashire are in the
vanguard of developing exciting
services for their users
TONY JONES, COUNTY COUNCIL CHAIRMAN



is turning

Libraries get loud

ONE word possibly comes to
mind when you think about
a library - "shush!"

But the thing you're
more likely to hear in
some of Lancashire's
libraries is "Get it
Loud".

Specifically Get It
Loud in Libraries is the
name for exciting award-
winning music gigs held
in some of the county's li-
braries.

Top music names have
graced the stage at Lancaster
including Brit Award winners
Florence and the Machine, The
Guillemots, The Wombats and Bat
for Lashes.

Mr Hudson liked it so much he came
back for a second appearance just be-
fore Christmas.

Since appearing, many of the up-
coming bands and acts have gone on
to great success.

The gigs give young people the
chance to enjoy some of the hottest
tipped bands in the UK and encour-
age them through the doors of the li-
brary to discover what else it can
offer.

Stewart Parsons, senior librarian,
said: "I love being at the centre of
what feels like a groundswell of
positive change and modernisation
of libraries in Lancashire."
Other libraries have also got in on
the act. Morecambe Library
hosted Hollywood film star Juli-
ette Lewis, while Burnley, Ingol,
Skelmersdale and Preston's Har-
ris Library have all held Get It
Loud in Libraries gigs.
For further details of upcoming
gigs check out the
website: [www.myspace.com/
getitloudinlibraries](http://www.myspace.com/getitloudinlibraries).

ON STAGE | Mr Hudson
playing Lancaster Library



the infant death risk

months, the safest place
for babies to sleep is in a
cot in the same room as
their parents.

Bob Wilson, coroners
officer, said "We are de-
lighted with the success
of 'Give Me Room to
Breathe' and are develop-
ing a resource pack for
other agencies wishing to
set up a similar campaign
in their area.

"We have already re-
ceived several expres-
sions of interest in the
resource pack.

"The Foundation for
the Study of Infant Deaths
(FSID), the national char-



ity supporting this cam-
paign has confirmed that
they are receiving en-
quiries about the

work being done in
Lancashire."

For more information
visit www.fsid.org.uk

SAFETY | An Image from the
campaign

what's on

Saturday 20 March –
Saturday 12 June
Last Post: Remembering
the First World War
This exhibition from The
British Postal Museum &
Archive explores the role
of the Post Office during
the First World War - the
recruitment of women
into the service and The
Post Office Rifles. Lan-
caster City Museum.

Saturday 20 March –
Saturday 12 June
Revisiting the Age of
Steam, Coal & Iron
Michael Poulter has trav-
elled the world to capture
images reminiscent of
the time of steam, coal
and iron. Lancaster City
Museum.

Thursday 1 April –
Sunday 4 July
The Bug Project: Insect Art
by Pat Ellacott
Insects outnumber humans
by millions.
Pat Ellacott's delicate and
detailed drawings lovingly
present the shapes, pat-
terns and designs of the in-
sects she has chosen.
Clitheroe Castle Museum.

Thursday 1 April –
Sunday 6 June
Geoff Rollinson: Wildlife
Artist
Geoff is a self-taught, Lan-
cashire-born artist who
worked as a game keeper so
was well placed to experi-
ence the wildlife of his work.
Gawthorpe Hall, Padiham,
near Burnley.

Friday 2 April –
Sunday 31 October
From Earth to Gallifrey
This family-orientated
mini-exhibition follows
Doctor Who from the
1960s to the present day.
Children can even put
their own TARDIS on one
of the planets visited by
Doctor Who on our space
travel wall.
Judges' Lodgings
Museum, Lancaster.

Sunday 4 April
Easter Egg Competition
1pm-4pm.
Egg painting followed by
rolling competitions, ses-
sions start at 1pm and
3pm. Meet Pepper Hill
Barn, Wycoller, near
Colne.

useful numbers

Bowland Visitor Centre, Beacon Fell Country
Park 01995 640557
Wycoller Country Park 01282 870253
Museums' main office 01772 534061
Museum of Lancashire 01772 534075
Lancaster Maritime Museum 01524 382264
Judges' Lodgings 01524 32808

Lancaster City Museum 01524 64637
Helmshore Textile Museum 01706 226459
You can find lots of information about
events at: www.lancsmuseums.gov.uk or
[www.lancashire.gov.uk/environment/
countryside](http://www.lancashire.gov.uk/environment/countryside)

Free Part Time Nursery Education places in Lancashire for 3 and 4 year olds

If you have a child born on or
between 1 January 2005 and
31 December 2009 your child
is entitled to a free part-time
pre-school nursery education
place from the start of the
Spring Term 2010
commencing in January.

A free place consists of a
maximum of five sessions per
week and no more than fifty-
five sessions for the Spring
term. A free session is for a
period of 2.5 hours in length.

There are three terms in the
year, covering a total of 36
weeks.

Places are available from any
of Lancashire County Council's
eligible providers of preschool
nursery education.

These can be Local Authority
(LA) maintained nursery
schools and nursery classes,
day nurseries, pre-school
playgroups and accredited
childminders on an approved
National Childminding

Association (NCA) Children
Centre First Network.

CHANGE IS ON THE WAY

Some nurseries and pre-
schools are trying out a new
scheme that offers 15 hours a
week of free flexible nursery
care and education. The time
is counted in hours not
sessions, so it may be easier
to arrange a pattern that meets
your needs.

Your chosen provider will
tell you if they are part of this
pilot scheme, and explain how
it works. Contact your local
provider to find out more or
phone the Family Information
Service on Freephone

0800 195
0137.



SafeStart



Remember going on your first ever holiday?

MEMORIES | A poster from the new fostering campaign

Sue Becker

WHETHER it was on a British beach, with donkey rides and a kite that wouldn't fly despite a stiff breeze; or somewhere in the country with long walks in shady lanes, the chances are you'll have deep-seated memories that still surface now and then.

Lancashire County Council is looking for people who can help make memories like this for children.

Not mind-blowing, once-in-a-lifetime memories, but everyday happy memories of summer days out, playing with a much-loved pet, or staying up late on New Year's Eve.

The county council acts as the 'corporate' parent for upwards of 1,250 children and young people from birth to 18.

All of these children and young people need homes where they can feel wanted, safe and secure - part of the family, in other words.

For some of them, a foster home may be the first place where they've felt like this.

Gill Green, the county council's fostering recruitment manager, said: "We're looking for people who want to find out more about being a foster carer. We have children who need to be placed coming to us through our social work teams every week, from newborn babies to teenagers. Because they - and their needs - are so varied, we need a large variety of fos-

ter carers we can place them with.

"We already have almost 500 approved foster carers who look after about 900 of the children who are in care in Lancashire. Their work is incredibly valuable, offering patience, affection and stability to children and young people who cannot live with their families."

Placements can vary from a few days to long-term, and wherever possible we try to keep brothers and sisters together, to reduce the sense of loss they may be experiencing.



We need a large variety of foster carers

There are no special qualifications for being a foster carer. It doesn't matter whether carers are single or in a marriage or partnership, or whether they are already parents. We are looking for people who have an interest in and understanding of children, who can communicate well with them, and who will stick with them through the inevitable ups and downs.

If you're interested in finding out how you could make memories for a child, call our friendly fostering recruitment team on 0800 195 1183.

They will send you an information pack and you can view online our new DVD which has Lancashire foster carers, their own children, and previously looked-after children and young people all talking about their experiences of fostering.

You can also visit our website: www.lancashire.gov.uk/fostering or attend an information evening.

Information evenings

8 March, 7pm:
Rossendale Child and Parent Support Service,
Newchurch Road, Rawtenstall

20 April, 7pm:
Lune Park Children's Centre, Ryelands Park,
Owen Road, Lancaster

12 May, 7pm:
Fairfield Children's Centre, Fairfield Street,
Accrington.



voice of vision

Steve Dean

Managing director (LCDL)



What does your job involve?

I am the managing director of Lancashire County Developments Limited (LCDL) - Lancashire County Council's economic development company.

My job involves planning and instigating projects that help support Lancashire businesses, gives people the opportunity to gain skills and employment and regenerate areas across the county.

Why did you become MD of LCDL?

I saw an opportunity to make a difference to the lives of people and supporting business across the county.

Lancashire is full of innovative and ambitious people who sometimes don't have the opportunities needed to achieve their potential and the county council recognises this and wants to help. LCDL is that help.

What motivates you?

Doing the best I can to provide the professional advice and support to businesses and partners across the county.

What is the most rewarding part of your job?

Seeing a project produce excellent results. The county council's finance package Rosebud is a good example. It has supported over 100 businesses in the last three years and attracted £20 million of private investment into Lancashire's economy.

What is the most challenging part of your job?

Having to say "no" to a business proposal because it is not commercial or would not achieve targets even with our help.

What are you looking forward to in the future?

Seeing the implementation of the county council's economic development strategy and the role LCDL has in delivering it.

The county's economy has a very strong future and we can compete with our neighbouring areas in becoming a true financial force in the UK.

What do you think the county council can offer businesses?

I think the public and private sectors have stood side by side rather than together and I believe that is now shifting so that both sectors realise how they can help each other. The county council is certainly moving in this direction and is becoming a business-friendly and approachable council that is willing to help the business sector.

Children in care get free laptops to aid their studies

Andy Swain

ACROSS Lancashire, nearly 600 young people in care have received free laptops to help them get online and support their studies.

The computers have been distributed by Lancashire County Council's Virtual School for Children in Care, which aims to ensure that children who are looked after

achieve their academic potential.

The scheme focuses on young people aged 11 to 18, who have been in care for more than six months, and encourages them to use a purpose-built educational website.

Anna (not her real name), who has benefited from the scheme, said: "As part of my A-level course, I have to complete online research. My

laptop has made a great difference.

"Getting online at home means I can work when I wish, I'm not restricted to using the computers at college. It's a fantastic help."

Peter Doyle, head-teacher of the Virtual School for Children in Care, said: "Carers have been assured of the safety of the system as both the laptop, and the

wireless 'dongle' have filters to prevent access to inappropriate websites."

County Councillor Susie Charles, cabinet member for children and young people, said: "Children and young people come into care through no fault of their own and we are committed to ensuring that they are not disadvantaged by their experience."



VIRTUAL HEADTEACHER
Peter Doyle

TRADING STANDARDS

Health warning over tobacco products



CAUTION | County Councillor Albert Atkinson

■ **Martin Crabtree**

THE health dangers of 'niche' tobacco products are being highlighted by Trading Standards and health bosses.

There is growing concern about the availability of other types of tobacco that are increasingly being used - particularly in the Indian, Bangladeshi and

Pakistani communities.

These 'niche' tobacco products include chewing tobacco such as gutkha, zarda and khaini; nasal tobacco snuff; small hand-rolled cigarettes called beedis and shisha/hookah tobacco that is smoked through a water pipe or bong.

A recent Trading Standards survey of 60 shops in East Lancashire found

products on sale in nine shops, which did not have the required health warnings.

County Councillor Albert Atkinson, deputy leader of Lancashire County Council, said: "We want to ensure that residents across all communities enjoy a healthy and high quality life.

"People need to be fully aware of the health dan-

gers of these types of product.

"Retailers need to ensure that all tobacco products are correctly labelled with the required health warnings and that they are only sold to people over the age of 18."

If you have information about the illegal sale of tobacco products, contact Consumer Direct on 08454 04 05 06.

■ BE BRIGHT, BE SEEN



CHRISTIE Duckworth from Banks Methodist School, West Lancashire, won top prize in the county council's 'Be Bright Be Seen' road safety competition. Christie is pictured (front) with headteacher Jean Morris (back) and fellow pupils.

NURSERY CARE

Plan to get more men into childcare

■ **Greg Bowen**

A CAMPAIGN has been launched encouraging more men to consider a career in childcare.

Lancashire County Council's Sure Start and Early Years Service are set to launch the next phase of their successful Supermanny campaign.

Research by the Children's Workforce Development Council shows that 55 per cent of parents would like a male

childcare worker for their nursery-aged child, but the childcare workforce is 98 per cent female.

Thanks to Supermanny, Lancashire is bucking the trend. Nearly eight per cent of students on the introductory Making Choices childcare programme, are male compared to the national average of only 2%.

Mike Barnes, recruitment and marketing officer, explains: "We are looking to build on our

excellent progress when the new campaign begins in March.

The campaign will include radio, bus and newspaper advertisements across the entire county.

Careers in childcare

For more information about a career in childcare contact: **0800 195 0137** or visit www.lancashire.gov.uk/childcare

HELP DIRECT has a new, low-cost telephone number. All of Lancashire's local Help Direct teams can now be contacted on 0303

333 1111. Customers calling from a landline telephone will automatically be directed to their local office. People calling from a

mobile will be asked to choose their location from a short list. Help Direct provides people with practical information and support.

Save money and stay safe

DRIVERS should check their car before an MOT, to save money and the inconvenience of a retest.

More than one third of all cars fail their MOT each year, often due to small problems that can be fixed before the test.

Ways to increase your chances of passing your time include:

- Checking all lights

work correctly with their casings in good condition.

- The minimum legal tyre tread depth is 1.6mm, but a minimum tread of 3mm is recommended as tyre performance falls dramatically below this level.

- Check for bulges or cuts in your tyres and repair or replace any that are damaged.

justamminute

Battery collections



CELL | Battery recycling

A RECYCLING drive will see over 20 tonnes of batteries collected from county and district council offices and schools this year.

A new agreement will see a company take on the collection, reducing costs to the county council by £58,000.

Scouting climate change

LANCASHIRE County Council has launched a new educational pack for the Scout and Girlguiding movement within Lancashire.

There are more than 21,000 scouts and guides across the county and the pack will enable them to learn more about the environment in a fun way.

For more information visit: www.lancashire.gov.uk/climatechange

Top adult learners

ADULTS in Lancashire who completed a wide range of courses organised by Lancashire Adult Learning have been honored at a special awards evening at the University of Central Lancashire.

The ceremony, which took place in March, recognised adults who have achieved outstanding success in a wide range of subjects.

Award categories included Carers' Award, Apprentice of the Year and E-learning.

For more information visit the adult learning website: www.lancashire.gov.uk/acs

Saving energy

THREE schools will invest in energy saving measures, cutting their carbon dioxide output by 135 tonnes a year, thanks to a loan from the county council. Savings on energy bills will equal the cost of the loans within 10 years.

Do you take a Learner driver out for extra practice sessions or know someone who does?

Have you heard about Lancashire County Council's **FREE Pre Pass Support Scheme?**

This award-winning course will help parents/mentors understand how they can provide the best support and advice for the Learner alongside their professional driving lessons.

The Road Safety Group now offers the course **EVERY SATURDAY** at a dedicated training centre in Leyland.

CONTACT US NOW

to book your place on a course

Call: **Chris Dunderdale 01772 534593**

Email: chris.dunderdale@lancashire.gov.uk

Visit: www.lancashire.gov.uk/roadsafety



Prince Michael
INTERNATIONAL
ROAD SAFETY AWARDS

Lancashire
County Council



POW! ZAP! WAM! KAPOW!

...THIS LOOKS LIKE A JOB FOR...

CALL NOW!...

...FOR ADVICE ABOUT CAREERS IN CHILDCARE...

SUPERMANNY

CHILDCARE HERO

PHONE: 0800 195 0137

WWW.LANCASHIRE.GOV.UK/CHILDCARE

IN 2009 17 MEN COMPLETED MAKING CHOICES AND ARE ON THEIR WAY TO A REWARDING CAREER IN CHILDCARE!

Lancashire
County Council




Would you like to work in childcare but don't have any qualifications? Then Making Choices could be the course for you!

To find out more about this **FREE** course or to book a place please contact Mike Barnes on 01772 331348.



New courses starting after Easter in Accrington, Burnley, Preston and Lancaster

You can book online via our website **www.lancashire.gov.uk/childcare** and follow the Recruitment link to Making Choices and booking form.

Lancashire
County Council

