



## SCHOOL.COM

**Virtual head  
fosters learning**

Page 2

## LOAN RANGERS

**Sleuths tackle  
loan-shark gangsters**

Page 3

## FINANCIAL AID

**New help to keep a  
roof over you head**

Page 4

# YOU'VE GOT OUR NUMBER

**£4m help where you need it, when you need it**

## GIVE US A RING WE'RE HERE TO HELP

Help Direct in east Lancashire can be contacted on  
**0303 3331010.**

Help Direct in Lancaster, Chorley and West Lancashire can be contacted on  
**0303 3331000.**

Help Direct in Preston and South Ribble can be contacted on  
**0303 3331030.**

Help Direct in Fylde can be contacted on  
**0303 3331020.**

Help Direct in Wyre can be contacted on  
**0303 3331021.**

**HOME maintenance, health support and a directory of hundreds of other local services are now available through a £4m project to help people in their daily lives.**

Lancashire's groundbreaking Help Direct unites the county council, district councils, police, the NHS and the fire and rescue service in providing practical support as quickly as possible.

A little help at the right time can go a long way...

"Each part of Lancashire will have a Help Direct base to respond to public inquiries", said Don Rowbottom, Lancashire County Council's wellbeing manager.

"We aim to help people get the practical help, guidance and information they need to stay independent, keep

By Andrew Lynn

healthy, feel safe, and be part of their local community.

"Practical support may be about help in the home, help with shopping or getting out and about, advice on housing or benefit entitlements, or keeping in touch with friends.

### Safe homes

"It is more than a simple information helpline. The key aim is for communities to come together to support people who don't naturally look for help - although they may be at risk of losing their independence or struggling with some everyday problem."

A wellbeing directory of local services will link with district council one-stop shops.

A "Safe Trader" scheme, endorsed by Trading Standards, will help people needing work on their homes to

choose reputable private traders. That part of the service will start in spring. "The Safe Trader scheme will, we hope, also include shopping and gardening services.

"Targeted support will be available to people in their homes or through community centres, or through links with health trainers, support groups and community health workers."

The scheme involves the voluntary sector and Lancashire Local committees that harmonise the work of the county council and district councils.

County Councillor Hazel Harding, Lancashire County Council leader, added: "Help Direct is a major initiative to support people, whatever their situation or circumstances.

"By working with partners we will ensure people can get practical help in a simple way. This is a scheme that will grow, linking more local organisations, to meet people's needs."

## Contact us for credit crunch advice

**PRACTICAL** advice for businesses and individuals with concerns over cash flow, invoice payments and redundancies is now available to help the county through the credit crunch.

A new range of services will help business through the downturn.

Thanks to the council's "Business Assist Package", callers will be routed directly to financial and commercial experts across the county.

"All our customer service operators have been briefed on responding to business and finance queries," said Councillor Hazel Harding, leader of Lancashire County Council.

### Mortgages

Callers with concerns about business credit can call for the latest on community grants and credit unions.

Advice for new businesses is available from enterprise agencies. The Chamber of Commerce can help with training, suppliers or import and export issues.

Councillor Harding added: "We're working with other councils so callers can get help on housing, mortgages, rent and Council Tax."

Partners include Lancashire Chamber of Commerce, the Lancashire and Blackpool Tourism Board and Business Link.

■ All calls will be treated in the strictest confidence. For more information, please call 0845 0530000.

How we support jobs - special report p6/7

## DEREK IS TOP OF THE (LOLLI) POPS

A "LOLLIPOP man" from the Ribble Valley has been named as the North West Lollipop Person of the Year.

School crossing patrol Derek Ashburner has been based at St Leonard's CE Primary School, in the village of Langho, for 10 years. Derek (72) was presented with a trophy and received £500 in travel vouchers after scooping the title of Kwik-Fit Insurance North West Lollipop Person of the Year.

He will now be entered into the competition to find the country's top lollipop person.

County Councillor Tom Burns, Cabinet member for Organisational Development, said: "School crossing patrols are a popular feature of many communities across the county.

"They're out in all types of weather helping our pupils get safely to school. They're a hard working and dedicated part of our workforce."

For information about working as a crossing patrol, contact Ken Speak on 01772 646810.



DEREK has the job licked: the North West's top lollipop man celebrates with St Leonard's children.

A cassette version of Vision is now available for visually impaired people from Galloway's Society for the Blind by calling 01772 744148

The presence of promotional leaflets delivered inside Vision does not imply Lancashire County Council endorsement.

YOUR LANCASHIRE: A PLACE WHERE EVERYONE MATTERS



**A full job description  
of all vacancies is available  
on our website**

**www.lancashire.gov.uk/vacancies**



# Ask Shirley

## ASK THE EXPERT

Questions  
answered  
by your  
friend in  
the know

### Van man can

*As Christmas has been and gone, I am left with a lot of waste which I need to take to a Household Waste Recycling Centre. I have heard that I may need a permit as I own a Ford Transit van. Is this correct?*

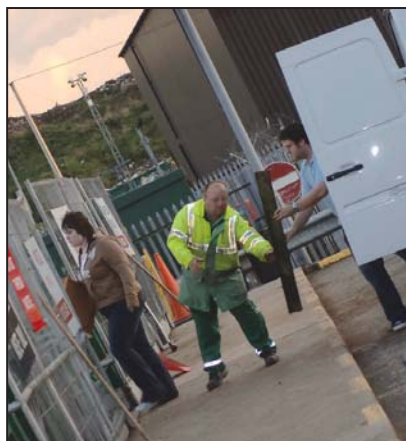
Mr. K, Carnforth

As you have a van you will require a permit to enter the site. To request a permit or for more information visit the county council's website: [www.lancashire.gov.uk](http://www.lancashire.gov.uk). Alternatively phone our customer service officers on 0845 0500957. To order a permit, you will need to have your vehicle registration number to hand and a list of the items that you wish to drop off. Permits should be ordered at least a week in advance.

### Unwelcome visitors

*MY house backs onto the Leeds and Liverpool Canal and I fear I may have a few unwanted visitors. The animals to which I am referring are rats. Naturally I would like to stop these rats entering my garden. Is there a pest control system or a department that could help?*

Mr K Patterson,  
Chorley



● NEW Year clearout: See "Van man can"

YOU need to speak to the Environmental Health team at your district council. In this case, contact Chorley Borough Council by telephone on 01257 515151. Contact numbers for the other district councils can be found at: [www.lancashire.gov.uk](http://www.lancashire.gov.uk)

### A degree of help

*I AM thinking about enrolling at university next year to do further studies. I am a little concerned about the financial support that I would get and want to weigh up all my options before I complete my application. Would it be possible for you to send me any leaflets with information that I could read through?*

Miss L Harrison,  
Lytham St Annes

YOU will need to contact Lancashire Student Services. They can provide you with an accurate assessment of your entitlement and whether you qualify for assistance. If you do not qualify, they will advise you of other known sources of help. Contact the student service team on 0845 0530000.

### In the picture

MY grandfather owns a Blue Badge which is up for renewal shortly. I have received the renewal forms and have seen that he needs to include two new passport photographs. The problem is that my grandfather is housebound and the only time he uses his Blue Badge is when I

take him to his doctor and hospital appointments.

I am really going to struggle to get him into a photo booth, are there any alternatives?

Mr P Atkins, Bacup

THE Blue Badge team appreciate that it is not always possible to get to a photo booth.

Photographs can be taken from a self service booth or any suitable photographs cut down to passport size. If you are using photographs from a digital camera, they must be printed on photographic paper. They must also be signed on the back. For more information contact the Blue Badge team on 0845 0530049.

### Special sign

*I OWN a small sandwich shop and was just wondering if I can use an A-board sign on the pavement to advertise my daily specials. I didn't think you were allowed to do this, but recently I have seen many businesses in the local area using this type of board and they don't seem to have been asked to move them.*

Mrs T Webb, Burnley

IT is an offence to put anything on the footway that can cause an obstruction, including advertising boards. A-boards may be permitted on private forecourts. Highway teams have the authority to remove obstructions. For more details contact Lancashire Highways by telephone on 0845 0530011 or email [highways@lancashire.gov.uk](mailto:highways@lancashire.gov.uk)

## 'Virtual head' to help pupils

### New Lancashire-wide role to help pupils to the top

**HEADTEACHER Peter Doyle has taken on a school with a difference.**

It has 560 primary pupils and 670 secondary pupils, who are scattered across the county.

And most of its pupils are looked after by foster carers.

Peter has been seconded from his regular post as headteacher of Up Holland High School to act as virtual school head (VSH) for the county's looked-after children and young people.

The idea of the post is to buck the trend of

lower academic achievement for such children.

There are still only 23 VSH posts in the country and Peter is one of only a handful in the north-west.

Peter said: "Our looked-after children and young people have already come up against difficulties in their lives and sometimes this can have an impact on their schooling.

"However, I'm determined that they should have the best possible chances in life, including education.

"Many of them have a feeling of rejection and lack of confidence but



● CARING: "virtual headteacher" Peter Doyle.

they're often resilient and can do well given the right support."

## THE HEAD'S JOB

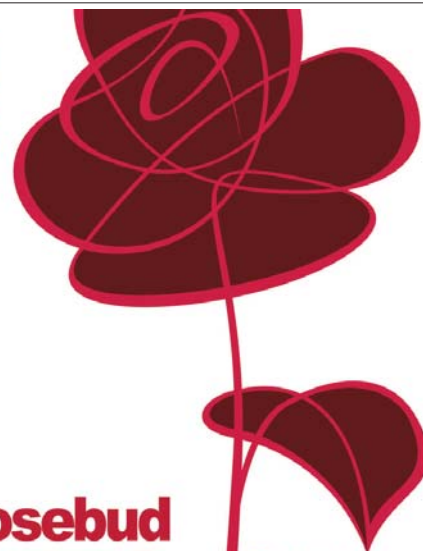
The role of the virtual school head is to:

- Co-ordinate information on looked-after children.
- To work with and train designated teachers.
- To ensure all children looked after have

a quality Personal Education Plan.

- To raise awareness with headteachers, advisers, governors, carers and all who work with looked-after children.
- The overall aim is to raise educational attainment of looked-after children.

**Letting  
your  
ideas  
grow**



**Rosebud**  
Call us on  
**01772  
536652**

Business  
Finance  
based on  
understanding  
your needs.

**We change lives**

Lancashire County Developments Ltd





## NEWS BRIEFS

### Trip down quality street

FOUR childcare providers were awarded with full Lancashire Quality Awards at a celebration event held at Wilton House in Chorley.

Receiving their awards were Whitegate Children's Centre in Padiham, which became the first children's centre in Lancashire to achieve the award; Yarrow Nursery School, Euxton, and childminders Helen Lawson and Helen Taylor, both from Clitheroe.

To achieve the award, providers had to show a wide range of work, including meeting children's needs, offering opportunities and experiences as well as management and business practice and team effectiveness.

County Councillor Jennifer Main, Cabinet member for children and young people, said: "This is an assurance that people are providing the very best for our children."

### New centre for young

A MASSIVE cash injection is set to transform services for young people in Nelson.

Councillors, staff and young people were thrilled to hear their £1.3m bid to the lottery's "myplace" funding programme had been successful.

The money will pay for a state-of-the-art youth centre on Leeds Road, with sheltered housing for young people in the pipeline for the same site.

The new centre will include kitchen, internet café and space for group work, arts, music and drama and opportunities to take part in the Duke of Edinburgh Award scheme.

## £4.5m boost for travelling public

THE newest bus and rail interchange in Lancashire is now open to the public.

The Nelson interchange replaces the old and dark Nelson bus station - and has been built to allow easy access to trains as well as buses.

About £4.5m has been spent to ensure that public transport in the area meets modern needs.

The bright and airy building also houses county council staff who can handle inquiries and issue travel passes and tickets six days a week.

County Councillor Matthew Tomlinson, Lancashire County Council Cabinet member for sustainable development, said: "Public transport has to move with the times. This building is a huge step in that direction."

The facility was opened last month at a ceremony complete with a display of vintage Ribbles buses.



● DECLARE this interchange open: County Councillor Shelagh Derwent cuts the ribbon, watched by, from left, Councillor John David, Councillor George Adams, Councillor Tony Beckett, Councillor Mohammed Iqbal and County Councillor Tim Ormrod

# Sharks attacked

## Team of sleuths head to county to reel in loan sharks

By Neil Graham

LOAN sharks are being tackled by a new team dedicated to protecting the public.

The illegal money-lenders operate in many Lancashire towns and charge extreme interest rates to people who can't get credit through legal channels.

Lancashire County Council's new team is dedicated to breaking through their web of secrecy and putting them in jail.

Jim Potts, the county council's chief trading standards officer, said: "They typically lend £100 - and will want £200 back within a matter of weeks."

"You can see them outside Post Offices, waiting to take people's benefits as repayments. It is a vicious treadmill for victims."

"The loan sharks are often the same people who are active in all manner of crimes. They use intimidation to stop people speaking out. Violence is commonplace. Our new team has experience elsewhere of surveillance, of interviewing victims confidentially and of taking these thugs to court - and I am keen that they work quickly and effectively."

Initial reports suggest that there may be 1,000 illegal money-lenders in Lancashire. Lancashire is home to three of the poorest areas in the country - areas ripe for illegal money-lenders to exploit.

Money-lending is legal when regulated by

### SHOP A CROOK

Anyone who thinks they may have borrowed money from an illegal money lender can ring 0300 5552222 or email: [stoploan sharks@lancashire.gov.uk](mailto:stoploan sharks@lancashire.gov.uk)

the Consumer Credit Act. Illegal lenders operate without one of the Act's licences.

Jim adds: "Some victims have been paying up to 1,300 per cent per year and most, of course, can't meet their repayments."

"As well as taking on the new team and helping credit unions, we will be establishing a taskforce to see how else we can help Lancashire people's problems with debt."

## Care stays at top

PEOPLE are receiving "excellent" social care support from the county council, a report says.

The Commission for Social Care Inspection has again ranked the county council as one of the best performing local authorities in the country after keeping its top three stars for its social care services for the third year running.

Over 30,000 adults across the county are supported every year. Their health and well-being is protected, giving them choice and control over their lives.

### £380m budget

The council also develops services for older people with dementia and mental health problems and has established a board to protect vulnerable adults.

County Councillor Anne Brown, cabinet member for Adult and Community Services, said: "With an annual budget of over £380m, we are committed to developing and providing social care services that put people first."

Lancashire Adult Learning  
learning for life...

# Learn while you earn

Free NVQs delivered across Lancashire  
(eligibility criteria apply)



[www.lal.lancashire.gov.uk](http://www.lal.lancashire.gov.uk) 01257 516445

ADVERTORIAL

## Learn while you earn

Lancashire Adult Learning is the county council's adult education and skills service. We offer a wide range of high quality learning and training opportunities for adults and businesses. The service employs a team of advisers who can give advice and guidance to meet your needs. Our fees are very competitive and in many cases training is free.

Our portfolio of qualifications on offer includes work-based NVQs in Customer Service, Business Administration, Supporting Teaching and Learning, Cleaning and Support Services, ITQ, Health and Social Care, Children and Young People (adults), Health, Children's Care, Learning and Development and Leadership and Management in a Care Setting (children). We can also provide free courses to improve Skills for Life (maths and English) in the workplace to enable people to take a level 2 qualification in these subjects.

Free training is available for people who do not already have a level 2 qualification (for example five GCSEs, grades A to C), so many work-based NVQs are likely to be free and small employers may even be able to

claim some wage compensation whilst their employees are on the programme. Through Train to Gain funding, skills for life qualifications are free too and some NVQs qualify for funding even if workers already have a level 2.

For people already in work, there is no need to attend college, as the assessors and tutors will meet learners in the workplace.

Employers with less than 50 people working for them may be eligible for wage refunds for staff to gain their NVQ or Skills for Life qualifications. You can phone us if you need more information.

We also deliver Apprenticeships in Business Administration, Customer Service, Health and Social Care, Children's Care, Learning and Development, Supporting Teaching and Learning and Cleaning and Support Services to employees in some public sectors.

Whatever your training needs, find out what we can offer - just give us a call. Lancashire Adult Learning learning for life...



## Cash advice through the crisis, with chief adviser Jim Dickson



IF you are struggling with your mortgage or think you might lose your job you should get advice as soon as you can.

If you do lose your job, ring Jobcentre Plus and claim benefit straightaway. You no longer have to wait for your final wages to run out before your Jobseekers' Allowance is paid.

If your income is low enough you could qualify for help with your mortgage interest.

New rules mean if you make a new claim for benefit after 5 January 2009 you will only have to wait for 13 weeks before you can get help with your mortgage.

## Don't lose your home – get advice!

You can also claim on mortgages up to £175,000 (up from £100,000) and this may be raised to £200,000 later.

You should check that you claim all the benefits you are entitled to, particularly if you or someone in your family suffers with poor health or has a disability, as the extra income can help pay the mortgage.

There are also organisations that can help you negotiate with your mortgage lender and other people you owe money to.

Remember, your mortgage is a priority debt and you could lose your home if you don't keep up your repayments.

■ If you would like a list of advice agencies in Lancashire or want to know what to do if you lose your job ask for our factsheets, "Benefits Advice and Information in Lancashire" and "Finishing your Job?" by writing to: Lancashire Welfare Rights Service, FREEPOST, Preston PR1 8BR.



●WORK starts to devise new ways to protect older people from fire: from left, Dick Stott; County Councillor Dorothy Westell; Dr Mervyn Eastman; David Halpin; Peter O'Brien; Patrick Ladbury.

## Kickstart for fire-safe bid

**FIREFIIGHTERS from across the country met in Lancashire to examine the safety problems faced by older people.**

Older people in Lancashire can already claim free fire-safety checks for their homes by contacting their local fire station.

But County Councillor Dorothy Westell, Lancashire County

Council's Champion for Older People, told fire chiefs that they should devise safety strategies specifically for the elderly.

Councillor Westell, who had a fire in her own home last year, said: "Fire is something you think about but don't think will ever happen to you."

"But it did happen to me. As people get older it can be hard to change the habits of a lifetime but

a few simple things like knowing where your keys are and closing all doors at night can really help. "It's vital that older people have a free home fire safety check."

Peter O'Brien, assistant chief fire officer said: "This year, all four fire deaths in Lancashire have been people over the age of 60. This isn't unique to Lancashire – the pattern is repeated right across the country."

## Car volunteers needed

**VOLUNTEER drivers are needed.**

The drivers take people who find it difficult to get around to places such as shopping centres and even to friends and relatives.

As part of the county's Community Car scheme, volunteers give their time and use their own cars - and receive contributions towards running costs. More details from Elaine Winrow on 01772 536778.

## They work for you

**CROSSING** patrols, school chefs, carers and highway workers were among the staff honoured at a recent awards evening.

More than 80 staff from Lancashire County Commercial Group were shortlisted in 24 categories to recognise achievements and dedication.

County Councillor Tom Burns said: "Without these staff, we couldn't provide good services."

## Keep an eye out for adult safety

PEOPLE are being urged to telephone Lancashire County Council if they, or someone they know, is believed to be at risk of mistreatment.

Child abuse has been widely reported, but no-one should overlook the dangers that some adults find themselves in.

"Some adults are unable to protect themselves", said Dilys Macdonald, safeguarding adults' co-ordinator at the county council.

### Concern

"Adult abuse can include neglect, such as withholding food, drink or medication, harassment or failing to ensure adequate supervision."

If you are concerned for yourself or someone else, contact your doctor, health visitor, social worker or care worker. If you are in immediate danger or believe a criminal act is being committed, contact the police.

Information is available at: [www.lancashire.gov.uk/safeguardingadults](http://www.lancashire.gov.uk/safeguardingadults)

You can speak to someone on 0845 0530028.



## You're telling us

Send your letters to:  
The Editor, Vision,  
Corporate Communications Group,  
County Hall, Preston PR1 8XJ  
neil.graham@lancashire.gov.uk

### Landowners lashed

HOW many of us, while driving through country lanes, have turned the corner and found the road filled with the debris that was once a hawthorn hedge?

More often than not, thorns and twigs will have been on the road for several days - a hazard for cyclists and motorists.

Recently, after driving on such a thorn-littered road, I noticed that a front tyre was punctured. There was a thorn in the tyre wall. I had to buy a new tyre. I also replaced my other three tyres with new ones.

Three weeks later, on the same road with four new tyres, I came across more hedge-cutting; the result being front and rear tyres punctured again.

I can't afford to go on like this. It could also cause an accident.

I am not looking for compensation. Nor do I look forward to the prospect of having to report every hedge-cutting incident to the police or the county council highways inspectors.

Landowners can prevent the problem in the first place by cutting hedges in a responsible manner. If not, then all of you, who like me suffer this problem and share my views, will have to join with me in reporting to the police and to the county council every incident of irresponsible hedge cutting.

F HOYLE  
Chipping

### Quest for truth

I FULLY support the drive to increase recycling and I try to

use the system Lancashire County Council has put in place as much as I can.

Many people would like to know what happens to recyclables after the binmen have taken it away.

Where do plastic cartons go? What happens to the metal, glass and paper we throw out?

Plastics present a problem as we are told that not all plastic materials eg yoghurt cartons, are recyclable. So we need to search each piece for the little number inside a triangle and sometimes take a guess.

And yet I saw a TV programme showing injection moulding material being produced from these very same items - chopped and chipped and melted. What is the truth about recyclable plastic?

K SLATER  
Samlesbury

■ **EVERYTHING** collected for recycling in Lancashire is sold to the market and turned into something useful. For example, 75% of this country's newspapers are made from recycled paper. Plastics are more complex: certain firms only accept the types of plastic that they have a market for - Andrew Coombe, waste management planner.

### Saving money?

#### Let us know

YOU ask in Vision what people are doing to tackle climate change.

There is much we can do. When my van died, I replaced it with an estate car that uses 33 per cent less diesel.

Then I designed and built an instrument for measuring heat

losses from my house.

The house is an "end terrace" with solid stone walls, so having insulated the loft, most of the losses are through walls, doors and windows. I had already addressed the draughts.

My calculation showed that at today's fuel prices, installing double glazing is a waste of money, with a payback time of around 30 years.

However, my house has old wooden shutters inside the windows. Restoring these, I found I could cut losses by 66%. Where the shutters have been removed, I am building new shutters that are twice as good an insulator as the old Victorian ones.

I found that my 18" thick stone walls have about the same insulation factor as a double-glazed window. So, in one room so far, I have built plasterboard stud walls across the alcoves either side of the chimney breast and lined them with glass-wool.

On the carrier bag front, I won't be using fewer bags. I take free carrier bags as I need to line my kitchen rubbish bin. I prefer to spend the money saving energy.

It seems that there are a lot of "good ideas" around, but few hard numbers. I'm not rich and I'm spending my own money, so I have to have hard numbers for what I choose to do.

T JACKSON  
Haslingden

■ **Lots of good ideas here** - and Lancashire County Council is exploring all sorts of ways to reduce its "carbon footprint". Does anyone else have good, practical ideas? Vision wants to know - editor.

## BE A WINNER - CHOOSE A SMARTER WAY TO MOVE

### Win £100 worth of vouchers for outdoor clothing!

Walking is the safest and easiest form of regular exercise and it costs nothing to get started. You can burn an average of 100 calories on a brisk 20-minute walk. What is more, it helps keep your heart healthy, lower blood pressure and reduce the risk of strokes, diabetes and osteoporosis. So what are you waiting for: start burning off those mince pies now!

To help you get started TravelWise in Lancashire is offering one lucky reader £100 worth of vouchers for an outdoor clothing store and 25 runners-up prizes of information packs and pedometers.



### WIN the chance to Drive On safely

Lancashire County Council's Road Safety Group is offering three lucky Vision readers the chance to refresh their driving skills.

"Drive on" is a two-hour refresher course delivered by Approved Driving Instructors, for drivers wanting to refresh or build on their skills. Whether you have been away from driving for a period of time, need a confidence boost on the road or simply want to refresh your driving skills, a Drive On session can help you become a safer driver.



To be in with a chance of winning just answer either or both of the following questions and return, by 16 January, to TravelWise Comp, Vision, County Hall, Preston PR1 8XJ or on-line at <http://www.lancashire.gov.uk/corporate/vision>

<p><b>On average how many calories can you burn on a brisk 20-minute walk?</b></p>	<p>Answer .....</p> <p>Name .....</p> <p>Address .....</p> <p>Email .....</p>
<p><b>What does this road sign mean?</b></p>	<p>Answer .....</p> <p>Name .....</p> <p>Address .....</p> <p>Email .....</p>

Choose a Smarter Way to Move. TravelWise in Lancashire promotes walking, cycling, public transport, car sharing and flexible working.



Usual competition rules apply.



## PENDLE / BURNLEY

Down your street

# United in prayer

A CELEBRATION to mark Advent took place last month, bringing different local churches under one roof to rejoice together.

Terry Murnane organised the gathering for singing and worship which took place at the **Burnley and Pendle Faith Centre**.

The centre, which is used by all religious groups in the area, is at Burnley Campus, one of the new

Building Schools for the Future establishments.

The pre-Christmas gathering was attended by representatives from a number of churches in the area.

They included Wellfield Mission, Blessed Trinity Roman Catholic College, Burnley Methodist Circuit and the Life Church.

The evening of worship was then rounded off in seasonal style with mulled wine, fruit punch and mince pies.



● ADVENT: church representatives included (L-R) Pastor Barry Hunter, the Rev Denise Free, Father Joe O'Carroll, Father Derek Lloyd.

## NEWS BRIEFS

### Cash boost is a class act

PADIHAM and Nelson are set to benefit from the first wave of a £1.9bn government cash boost for ageing primary schools.

At least £23m will be made available in the next two years. County Hall has been consulting with local schools to help draw up Lancashire's strategy to target areas of greatest need.

County councillor Vall Patel, Cabinet member for schools, said the funding would be a "fantastic boost".

### Stitch in time

A NEW book exploring the history of embroidery has gone on display at a stately home in East Lancashire.

Featuring some of the 300 textiles on display at Gawthorpe Hall in Padiham, the publication discusses how popular embroidery was historically.

The book – called 19th Century Embroidery Techniques – was written by Gail Marsh, curator of exhibits at the hall.

Gawthorpe Hall is open Tuesday to Thursday and at weekends from 1-5pm. Admission is £4 for adults, concessions £3. Accompanied children and National Trust members are free.

### Local issues

MEMBERS of the public are welcome to attend decision-making meetings of Lancashire Local committees in their area.

The committees unite Lancashire County Council and district councils so that policies and services are tailored to each area.

The next Burnley Lancashire Local will be held on Monday January 12 at 6.30pm in Burnley town hall.

The next Pendle Lancashire Local will be held on Wednesday January 7 at 6.30pm.

It will take place in Trawden Community Centre, Church Street, Trawden.

# Baby boom delivers

RISING birth rates have contributed towards a multi-million pound regeneration plan, including crucial schools redevelopment and more open spaces in the Whitefield area of Nelson.

Increasing numbers of children in the area have encouraged the county council to fund the next step in revitalising the district.

School planner Ian Glaister said: "All the surplus school places are filling up now owing to the birth

## New school plan drives regeneration

By Ginny Bridgewater

rate rising steadily over the last six years, so much so that by September we won't have enough spaces."

Whitefield Infant School and Lomeshaye Juniors will be the first schools to benefit from the regeneration. They currently share the same site in

Norfolk Street. Under the plans a new infant school will be built on an old water board site, freed up in recent years by the demolition of run-down housing.

The infant school would grow from 60 to 90 pupils in each year with the junior school expanding to fill the old site.

### Support

If the go-ahead is given for the expansion, temporary additional accommodation would be provided at the present Whitefield Infants to create three forms of entry from September.

More places would also be created at Lomeshaye Juniors, with three forms of entry from 2012.

Ian said: "This has taken a while to get underway because the area was so densely populated.

"We hope for support because we are creating more open spaces and improving the environment as well as making sure people can send their children to schools near where they live."

To improve access, Every Street is set to reopen to through traffic.

# Rubbish is child's play



● GOING GREEN: Le Monde Petit teacher, Keely Moore, with composting barrow, and children, Almee Smith four, and three-year-olds Harvey McKenna and Maddison Relly.

CHILDREN at a Burnley nursery have been rummaging in rubbish and playing with worms after receiving a £500 cash boost.

Le Monde Petit day nursery bought a full collection of recycling tools including compost bins, a wormery and a brand new wheelbarrow with their Waste Action Grant.

And the children, aged from three months to five years, just couldn't wait to get their hands dirty.

New kitchen caddies and a wheelbarrow have also helped to improve recycling at the nursery as well as teaching the children the importance of minimising the waste that ends up in landfill.

Teacher Keeley Moore said: "This equipment will really help recycling become hands on and fun for the children.

"It is never too soon to start to teach them about how to manage rubbish more effectively."

So far more than 40 schools, organisations and community groups across Lancashire have received Waste Action Grants, administered by Global Renewables, for a variety of recycling projects.

Councillor Tony Martin, cabinet member for resources and performance said: "It is fantastic to see that so many people are being so positive and proactive about waste management."

For information or an application form go to [www.globalrenewables.co.uk/wasteactiongrants](http://www.globalrenewables.co.uk/wasteactiongrants) or call 01772 642885 quoting "Waste Action Grants".

## HAVE YOUR SAY

MEMBERS of the public can speak to planners at Pendle Enterprise Haven in Every Street on January 20 from 4pm to 7pm and at Lomeshaye Junior School on January 22 from 9am to 10.30am.

## Free Part Time Nursery Education places in Lancashire for 3 and 4 year olds

If you have a child born on or between 1 January 2004 and 31 December 2005 your child is entitled to a free part-time pre-school nursery education place from the start of the Spring Term 2009 commencing in January.

A free place consists of a maximum of five sessions per week and no more than fifty-five sessions for the Spring term. A free session is for a period of 2.5 hours in length. There are three terms in the year, covering a total of 38 weeks.

Places are available from any of Lancashire County Council's eligible providers of pre-school nursery education.

These can be Local Authority (LA) maintained nursery schools and nursery classes, providers in the independent, private and voluntary sectors or accredited childminders on an approved National Childminding Association (NCMA) Children Come First Network.

Further information including a Parent Guide and a list of eligible providers within your area may be obtained from the Childcare Information Service on Freephone 0800 195 0137.

SureStart

Lancashire  
County Council

# Youngsters on the ball at Turf Moor

YOUNGSTERS got the star treatment when they bumped into their football heroes during a day out at Turf Moor.

Burnley striker Jay Rodriguez, manager Owen Coyle and several Burnley players stopped to answer questions and sign autographs for 40 pupils from Year 6 of the town's St Mary's RC Pri-

mary School. The children visited the ground as part of a reminiscence day hosted by the Claret's Trust and supported by county council libraries.

They bumped into the players as they were taken on a tour of the ground after a welcome by club chief executive Paul Fletcher.

Ray and Sue Martin, of the council's children

and young people's library service, organised a range of activities based on the history of the club including photographs and memorabilia.

Some veteran players from the 50s and 60s also came to talk, along with some supporters for the schoolchildren to interview.

Susan Halstead, of Burnley library, said:

"The veteran players showed the children the old heavy leather footballs they used to play with, as well as the shorts they wore back then!"

"The children asked a lot of questions and the staff were impressed at how knowledgeable they were."

The club also provided the children with tickets to a big game.





## CHORLEY / WEST LANCASHIRE

Down your street

## Pigging brilliant!

CHILDREN at St John's CE Methodist Primary School in Brinscall have got new playmates to keep them entertained and teach them about recycling.

The Roly Pigs found their new home after the school applied for a Waste Action Grant from Lancashire County Council.

The bright green pigs eat the school's food waste, which is then turned into compost.

School administrator Carole Lormer said: "The children absolutely love the Roly Pigs!"

"They have been feeding and turning them every day using leftover fruit. We have only just started to

use them, but they will be fantastic for us in the future as we have so much fruit waste from the school. It can now be used as compost on our gardens and also by our gardening club."

Waste Action Grants support projects, activities, resources or equipment to help encourage recycling and waste reduction in Lancashire.

Grants are up to £500. So far, more than 40 schools, organisations and community groups have received them for a variety of projects.

■ For further information or an application form log on to [www.globalrenewables.co.uk/wasteactiongrants](http://www.globalrenewables.co.uk/wasteactiongrants) or call 01772 642885 quoting 'Waste Action Grants'.



● KEEN AND GREEN: Pupils at St John's school feed their new pal Roly Pig.

# Chance to hit jackpot

## Cash available to turn ideas into reality

PEOPLE in the Chorley area are being urged to get their thinking caps on and come up with good ideas for local projects.

Those ideas can receive a cash boost thanks to the area's Lancashire Local committee, which has thousands of pounds available to support projects.

Young people in particular are being asked to apply for "Project Grants for Young People" which exist to turn a variety of good ideas into reality.

Adult volunteer groups can also apply for "Local Gateway Grants" and "Climate Change Grants".

County Councillor Pat Case,

By Neil Graham

chairman of the Chorley Lancashire Local committee, said: "A lot of people have good ideas for things that need doing – but complain that there is no money available."

"These grants mean that money is now available for a wide range of projects. It can be for things such as sports, arts, climate improvements, even trips to larger towns for things such as theatre."

"Chorley is blessed with having many voluntary groups and I am keen

that we support them. Local councils should not try to do everything themselves."

"Local groups often know exactly what is needed for their area – and that is why we now want to support them with this seedcorn money."

### Support

Grants can range from less than £100 to thousands of pounds.

As well as Climate Change Grants, Project Grants for Young People and Local Gateway Grants, each county council member of the committee has

a £1,250 "pot" of cash to support socially and economically useful activities in their own area.

Councillor Case added: "I particularly want to see young people applying for money for projects and they can be from any part of the area, rural or urban."

"Some people feel it is hard to find their way around the different types of grants. But any councillor will be glad to guide them."

■ Initial information about available grants can be obtained from Mike Neville on 01772 533431.

## Honouring our local heroes



● SACRIFICES REMEMBERED: Lindsay Hoyle, MP for Chorley, Alan Whittaker chairman of Lancashire County Council, Sergeant Major Chris Dawkins C64 Medical Squadron and local author Steve Williams.

CHORLEY Library hosted a special event to celebrate Lancashire Heroes Month and to mark the proud centenary of the Territorial Army.

Soldiers from the local TA Medical Squadron took part and proceedings also included a special military medical demonstration.

The unit's honorary colonel, Lindsay Hoyle MP, joined Lancashire County Council chairman Alan Whittaker at the library to talk about the plans for a memorial to the Chorley Pals and to discuss the artist's impression of it that has been produced.

TA100 is a year of celebration to mark the contribution of Territorial soldiers past and present across a century of service to the nation.

## £300,000 for coroner's court

MORE than £300,000 is being invested to provide new premises for the coroner's court serving West Lancashire.

The new building, at Faraday Court in Fulwood, will feature two court rooms for inquests and private rooms for Preston and Chorley families and legal representatives.

County Councillor Anne Brown, Cabinet member for adult and community services, said: "The current court and office is not ideal in this day and age."

"Many of us will have contact with the coroner's service at some point in our lives – people deserve an effective and modern service at what is a very

sensitive time for families. This building will be spacious and meet the needs of a modern service."

Approximately 40 per cent of all deaths are referred to the coroner who issues a certificate allowing bodies to be buried.

A relatively small proportion of deaths require further medical investigation and an inquest.

The new building is expected to open in February.

## Class act for older schools

CHORLEY is set to benefit from the first wave of a £1.9bn Government cash boost for ageing primary schools.

At least £23m will be made available in the next two years – with some Chorley primaries in line for cash.

Since the Primary Capital Programme was approved education bosses at County Hall have been consulting with Chorley schools to draw up Lancashire's own strategy to target areas of greatest need.

County councillor Vali Patel, Cabinet member

for schools, said the funding would be a "fantastic boost".

He said: "This is not a quick fix. It is a long-term, planned approach to setting up a primary school infrastructure that will be the pride of the county and will give children the best possible start in education for years to come."

Factors such as age and condition of buildings, deprivation of the surrounding area, surplus places, test results and popularity of schools were all taken into account in looking at where the first investments should be made.

## NEWS BRIEFS

### Owzat for a cash boost?

SIGHTSCREENS are to be improved at Euxton Cricket Club, thanks to a Lancashire Local grant.

County Councillor Alan Whittaker supported the £300 application to make the screens suitable for use by players with poor sight.

The improvements will make screens reversible.

That means that both red and white cricket balls can be seen by batsmen during the club's matches.

### Ace of clubs

YOUNG people in Tarleton may soon have a new youth club.

A steering group, involving County Councillor Malcolm Barron, was set up last month and members have already identified the village sports centre as a venue.

It is hoped that the club will open early in the New Year.

### Slowing down

ROAD safety will be boosted near a school by limiting traffic to 20mph.

New "flat-top" traffic humps and an interactive speed sign will also be installed near Manor Road Primary School, Clayton-le-Woods. A "puffin" style crossing was introduced near the school some time ago.

### On the move

SOCIAL care services for adults, children and families are being relocated from offices in Ormskirk as part of plans to make better use of accommodation before a new purpose-built building is developed.

The office and its staff will move from the outdated Greetley Buildings on Derby Street to new offices at Skelmersdale Library complex in mid-January.

Staff will be transferred and service provision will not be affected.

A free telephone line will be available at Greetley Buildings Mon-Fri, 8.45am to 5pm, to connect people with the Skelmersdale office.

Anyone with concerns should speak initially to their allocated worker if they have one, or ring 0845 0530029.

## Free Part Time Nursery Education places in Lancashire for 3 and 4 year olds

If you have a child born on or between 1 January 2004 and 31 December 2005 your child is entitled to a free part-time pre-school nursery education place from the start of the Spring Term 2009 commencing in January.

A free place consists of a maximum of five sessions per week and no more than fifty-five sessions for the Spring term. A free session is for a period of 2.5 hours in length. There are three terms in the year, covering a total of 38 weeks.

Places are available from any of Lancashire County Council's eligible providers of pre-school nursery education.

These can be Local Authority (LA) maintained nursery schools and nursery classes, providers in the independent, private and voluntary sectors or accredited childminders on an approved National Childminding Association (NCMA) Children Come First Network.

Further information including a Parent Guide and a list of eligible providers within your area may be obtained from the Childcare Information Service on Freephone 0800 195 0137.

SureStart

Lancashire  
County Council





## LANCASTER / RIBBLE VALLEY

Down your street



● IN THE NET: team members with Councillor Robert Thomson, coach Sarah Thompson, County Councillor Chris Holtom, chair of Lancashire Local.

## Netball club nets a bonus

TWO local voluntary youth groups that support young people to take part in leisure activities in the **Ribble Valley** have won grants totalling £3,500.

Ribble Valley Netball Club netted £3,000 to enable a mixed-aged squad of 90 players (10 teams aged 10-16 years) plus coaches and umpires from the district to travel and take part in a national tournament in Nottingham in June 2009.

The cash was awarded by Ribble Valley's Lancashire Local committee - a body formed of Ribble Valley county councillors and district councillors.

Coach Sarah Thompson said: "This money is great for grassroots netball.

"The Nottingham tournament is the real

highlight of the year - it's an opportunity for the girls of all ages and abilities to bond together, travel and meet girls from other parts of the country."

The remaining £500 has been allocated to XCavate, a local youth group for 11-15's based at St James' Church in Clitheroe.

The cash will help meet transport and driver-training costs to provide opportunities for young people to develop new skills during trips and adventure weekends.

■ If you are a registered voluntary youth group or project and would like to apply for a small grant for young people contact Carmel Fenning at Lancashire County Council on 01254 876295 or email [carmel.fenning@lancashire.gov.uk](mailto:carmel.fenning@lancashire.gov.uk)

## NEWS BRIEFS

## Call goes out for volunteers

THE volunteer service at Lancashire County Council is looking for helpers to support vulnerable people in the Lancaster and Morecambe area.

Julie Sumner of the service said: "Volunteer placements involve supporting adults and their carers who have become socially isolated through age or disability.

"This can be anything from befriending people in their own homes to helping them to take part in leisure and community activities, such as going to a football match, shopping or simply having a coffee in town."

To find out more ring the Helpline on 01257 248118 or visit [www.lancashire.gov.uk/volunteer](http://www.lancashire.gov.uk/volunteer)

## Local counts

MEMBERS of the public are welcome to attend decision-making meetings of Lancashire Local committees in their area.

The committees unite county and district councils so that policies and services are tailored to each area. The next Ribble Valley meeting is at 6pm on January 7 in Ribblesdale High School, Clitheroe.

The next Lancaster meeting will be held on January 20 at a venue to be confirmed.

## Kids' voices

CHILDREN and young people in the Ribble Valley are being invited to give their views at a showcase event run by the county council's Children's Trust Partnership.

They will be asked about subjects including safety in their community, staying healthy, what facilities they would like to access and what they think their area needs to help them become economically independent in the future. Children and Young People's champion Sarah Callaghan wants six volunteers to attend the event on January 15 at The Grand in Clitheroe from 2.30pm to 4pm.

To register contact Sarah at [Sarah.callaghan@cxl-uk.com](mailto:Sarah.callaghan@cxl-uk.com)

## Signpost points out village's proud past

## Project crosses boundaries

A RESTORATION project has crossed boundaries to provide a signpost into modern Lancashire's past.

A newly-restored fingerpost has been unveiled as a reminder of Bolton-by-Bowland's Yorkshire links.

The work took place more than three decades after the boundary between Yorkshire and Lancashire was moved further east.

All of the road signs in the "new Lancashire" that mentioned the white rose county were broken after the boundary change in 1974 and most were replaced by modern signs.

But some remained in a forlorn state as rusting reminders of a former time.

County Councillor Mary Wilson, vice-chair of the Forest of Bowland

By Ginny Bridgewater

Area of Outstanding Natural Beauty's Joint Advisory Committee, said: "This sign has been beautifully restored and is perfectly in keeping with the character of the village and its well-maintained village green with stocks and stone cross."

## Beauty

Guest of honour at the unveiling was John Kenyon from Grindleton. He was the Superintendent of Highways in 1974 who reluctantly carried out the order to break the tops off the old signs.

The Forest of Bowland Area of Outstanding Natural Beauty is a nationally protected landscape and is internationally important for its heather moorland, blanket bog and its rare birds.



● A POSITIVE SIGN: Councillor Mary Wilson and villagers with their restored fingerpost.

## Taking care of the carers

WHILE most youngsters are preoccupied with playing out and football, there are 500 in Lancashire whose childhood is not so innocent.

For many of them school homework means the start, rather than the end, of a day's work.

While their friends are playing games, Lancashire's young carers could be helping look after brothers, sisters or even their parents.

Poor health and family discord can make some children in Lancashire grow up quickly.

Their role is supported by the county council's Young Carers' Project. And 65 of the children and

young people enjoyed a well-earned break when they travelled from across the county for a weekend's activity holiday at Winmarleigh Hall, near Lancaster.

Neil Worsley is Young Carers' Project manager for Hyndburn and Ribble Valley. He said: "These young people take on a great deal of responsibility, often without recognition.

"We have to think of the terrific role they play in their families' lives - and give them some occasional respite."

The trip was provided free of charge by the NST Travel Group through its links with the Princess Royal Trust for Carers.

## Learning to have a voice

A RANGE of free courses are being offered to people in the Ribble Valley who would like to learn more about advocacy.

The courses, delivered by East Lancashire Advocacy Service and funded through the county council's Lancashire Adult Learning,

include an introduction to advocacy and a foundation course.

Learners have the opportunity to develop their own skills and to understand what it means to help others have their voices heard.

The courses are suitable for anyone with an interest in advocacy, anyone who already pro-

vides support to people - including volunteers and workers from the voluntary, community and faith sectors - or anyone interested in a health and social care career.

Workers in statutory or private-sector organisations can also benefit.

Courses are free to volunteers and those on certain income related

benefits. For more information or to book a place on a course, contact East Lancashire Advocacy Service by calling 01254 301030.

Other adult learning courses are also offered by the county council.

For more information visit online at [www.lancashire.gov.uk/adultlearning](http://www.lancashire.gov.uk/adultlearning)

## Free Part Time Nursery Education places in Lancashire for 3 and 4 year olds

If you have a child born on or between 1 January 2004 and 31 December 2005 your child is entitled to a free part-time pre-school nursery education place from the start of the Spring Term 2009 commencing in January.

A free place consists of a maximum of five sessions per week and no more than fifty-five sessions for the Spring term. A free session is for a period of 2.5 hours in length. There are three terms in the year, covering a total of 38 weeks.

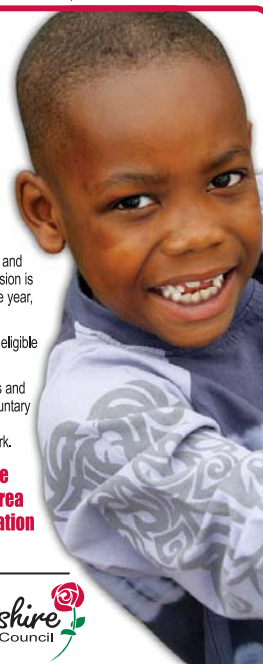
Places are available from any of Lancashire County Council's eligible providers of pre-school nursery education.

These can be Local Authority (LA) maintained nursery schools and nursery classes, providers in the independent, private and voluntary sectors or accredited childminders on an approved National Childminding Association (NCMA) Children Come First Network.

Further information including a Parent Guide and a list of eligible providers within your area may be obtained from the Childcare Information Service on Freephone 0800 195 0137.

SureStart

Lancashire  
County Council





## HYNDBURN / ROSSENDALE

Down your street

# Helping Stacey cut it

A YOUNG hairdresser has started her own business thanks to help from Rosebud Finance.

Stacey Walsh decided to start up her hairdressing business Estilo after a three-month trip to Australia inspired her to take on a new challenge.

Her salon, based in Burgess Street, Haslingden, offers a full range of styles and she is preparing to offer manicure treatments too.

Stacey (22) said: "I plan to take on an apprentice and to use the salon as a base while I visit residential homes to offer hair-cutting to the elderly."

"Rosebud has given me a great opportunity to start my own business and I am grateful for the help and support I have received." Lancashire County Council leader

Hazel Harding paid a visit to the salon. She said: "This success story sums up the impact Rosebud has had across the county and the 400-plus businesses it has helped either start up or expand."

## Funding

County council-backed Rosebud is owned by the people of Lancashire and offers loans of £5,000 to £750,000.

Any income and profit made is recycled, providing further investment opportunities for new clients in the county.

Rosebud can provide loans and equity funding to firms in the county and those re-locating here.

■ **To find out more about Rosebud Finance call (01772) 536652 or visit: www.lcdl.co.uk**



• A CUT ABOVE: hairdresser Stacey Walsh now plans to expand.

## NEWS BRIEFS

### Searching for the X Factor

ELECTED representatives in Rossendale have been fighting it out to see which one has the X-tra factor.

In a "political speed-dating" session with four local schools, 11 local councillors and county councillors battled it out to win the support of 24 of the borough's youngsters.

Each "suitor" had just two minutes to sell themselves and their views before the whistle blew.

Later, the youngsters lined up to enter a mock polling station to vote for the councillor with the X-tra factor. In a nail-biting cliff hanger, honours were even between Conservative Jason Gledhill and Labour's Sean Serridge.

### Welcome loan

A NOT-FOR-PROFIT company that helps educate the social, voluntary and faith sectors has received a loan through Lancashire County Council.

Social Enterprises Consultancy and Training is the second recipient of a loan through the Business Investment Deals (BID). Based on Blackburn Road in Accrington the company aims to develop and improve the skills and knowledge of organisations.

BID is managed by the county's economic development department and offers "soft" loans of up to £10,000 to social enterprises. For details, contact 0800 6122029 or log on to www.no-limits.org.uk

### Local voices

LANCASHIRE Local committees bring together county and district councillors to take decisions over neighbourhood issues.

The next Hyndburn district Lancashire Local is on January 19 at 7pm in Springhill Community Centre, Exchange Street, Accrington.

The next Rossendale meeting is on the same date at 6.30pm in the Old Fire Station, Burnley Road, Rawtenstall.

# On the road to £50m

COMMUNITIES and the economy in Hyndburn will benefit if a bid for £50m government funding is a success, according to council and business leaders.

Local representatives and health and public transport companies met with senior county council figures, Capita and Blackburn with Darwen Council to discuss major upgrades to East Lancashire's public transport through the Pennine Reach scheme.

County council chief executive Ged Fitzgerald said: "Pennine Reach is about making a commitment to public services and helping Hyndburn's

## Bid for transport cash to benefit economy

By Martin Crabtree

communities and businesses to achieve their ambitions.

"The county council is keen to make Pennine Reach a reality and, judging by the outcome of the consultation to date and by comments and questions at the meeting, it is clear that there is broad support from local people."

"The opportunity for so much investment is too good to miss."

Mike Dammis, chief executive of East Lancashire Chamber of Com-

merce, said: "Pennine Reach is central to the long-term prosperity of Hyndburn and east Lancashire."

"Household incomes in Hyndburn are, on average, around £5,000 below the UK average."

### Struggle

"That is partly due to the employment opportunities in the immediate area and the transport to and from them - Pennine Reach has the potential to tackle these issues. If we stay as we are, business in East Lan-

cashire will continue to struggle and become increasingly marginalised by out-of-town shopping and competitors with better transport links."

"The competition for transport money from the government is ferocious and I am pleased the Pennine Reach bid is so strong."

"I believe there won't be another opportunity of this kind until at least 2015 - and even then the clamour for investment means there will be no guarantee any funds will come to east Lancashire."

## A roundabout way to safety



• SAFETY FIRST: Dorothy Westell and highways engineer Graeme Leathard at the site of the roundabout.

WORK has started on a new £800,000 roundabout in Oswaldtwistle.

The Britannia crossroads roundabout is being built in response to a number of accidents at the Haslingden Old Road and Lotice Lane/Hill Lane junction.

The crossroads need to be widened to make way for the new road layout.

County Councillor Dorothy Westell, chair of Lancashire Local, visited the site as work started.

She said: "This roundabout is something that has long been campaigned for and I am delighted that work has now begun."

"The number of injuries and death at this location over the years has caused great concern and upset."

"I hope that the work we are doing results in a dramatic and permanent improvement in safety at this spot."

Engineers are aiming to have the roundabout work finished by May.

# Class act for old schools

HYNDBURN is set to benefit from the first wave of a £1.9bn government cash boost for ageing primary schools.

At least £23m will be made available in the next two years - and some Oswaldtwistle primaries are in line to benefit first.

Since the Primary Capital Programme was approved, county education bosses have been consulting with Oswaldtwistle schools to help draw up a strategy to target areas of greatest need.

Councillor Vali Patel, Cabinet member for schools, said the funding would be a "fantastic boost".

He added: "This is not a quick fix. It is a long-term,

planned approach to setting up a primary school infrastructure that will be the pride of the county and will give children the best possible start in education for years to come."

The age and condition of buildings, local deprivation, surplus places, test results and popularity of schools were all taken into account when looking at where the first investments should be made.

## Library boost

CRAWSHAWBOOTH Library in Rossendale, will be closed until the spring for a £495,000 refurbishment.

The premises on Adelaide Street are used as a library and a youth and community centre.

Lancashire County Council is investing the money to extend and re-visit the building.

The proposed refurbishment will see the library double in size.

The plans include a new roof, windows, rewiring and heating system and improved thermal and fire resisting efficiencies.

While Crawshaw-booth is shut people can

access the service at a number of other libraries in the area:

**Rawtenstall Library**, Queens Square, Haslingden Road, Rawtenstall.

**Bacup Library**, St James Square, Bacup.

**Haslingden Library**, Deardengate, Haslingden.

**Burnley Library**, Grimshaw Street, Burnley.

A mobile library service also visits the **Goodshaw/Loveclough** area once every fortnight.

For more details, contact Rawtenstall Library staff on 01706 227911

Books and other loaned items can be returned or renewed at any county library.

## Free Part Time Nursery Education places in Lancashire for 3 and 4 year olds

If you have a child born on or between 1 January 2004 and 31 December 2005 your child is entitled to a free part-time pre-school nursery education place from the start of the Spring Term 2009 commencing in January.

A free place consists of a maximum of five sessions per week and no more than fifty-five sessions for the Spring term. A free session is for a period of 2.5 hours in length. There are three terms in the year, covering a total of 38 weeks.

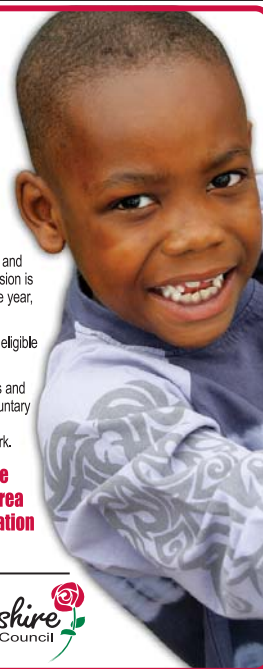
Places are available from any of Lancashire County Council's eligible providers of pre-school nursery education.

These can be Local Authority (LA) maintained nursery schools and nursery classes, providers in the independent, private and voluntary sectors or accredited childminders on an approved National Childminding Association (NCMA) Children Come First Network.

**Further information including a Parent Guide and a list of eligible providers within your area may be obtained from the Childcare Information Service on Freephone 0800 195 0137.**

**SureStart**

**Lancashire**  
County Council





## PRESTON / SOUTH RIBBLE

Down your street

## Cash is child's play

TODDLERS and parents are to buy new play and craft equipment after receiving a welcome £300 Lancashire Local grant last month.

Members of Noah's Ark Parent and Toddler Play Group needed new equipment to keep up their good work – so they approached County Councillor Graham Davies.

Every county councillor member of Lancashire Local Committees has council money available to support socially useful schemes.

And Councillor Davies agreed to give the group £300 from his "pot" of

cash. Noah's Ark members help parents and children in the **Bamber Bridge** and **Walton-le-Dale** areas.

Councillor Davies said he was delighted to help the group with council cash support.

He said: "This group does excellent work in supporting parents and children."

"Members are all parents themselves and they volunteer to run the group. They deserve our support."

The group meets on Monday mornings at St Aidan's Church Community Hall on Station Road, Bamber Bridge.



● PLAY TIME: Parents and children with Councillor Graham Davies at the Noah's Ark group.

## NEWS BRIEFS

## Road boost is green for go

HIGHWAYS improvements have been given the go-ahead on South Ribble roads.

Improvements in Penwortham include pavement work at Moss Acre, kerb repairs at Studholme Avenue and Marshalls Broad and road surfacing on Broad Oak Lane.

In Leyland work will take place on Forestry, Hoghton Road, Maplewood Drive, Pinewood Crescent and part of Slater Lane.

Croston Road, Leyland, will also have footpath repairs and there will be improvements to the junction of Hannel Lane and Chorley Road in Walton-le-Dale.

## Local voices

MEMBERS of the public are welcome to attend decision-making meetings of Lancashire Local committees in their area.

The committees unite Lancashire County Council and district councils so that policies and services are tailored to each area. The next **South Ribble** Lancashire Local will be held at 7pm on Thursday January 15 in Walton-le-Dale High School, Brindle Road, Bamber Bridge.

The next **Preston** Lancashire Local meeting will be at 6.30pm on Wednesday January 28 in County Hall on Fishergate Hill.

## Jam busters

BUS-stops on a busy town centre road are to gain "clearways" to smooth the free flow of traffic.

The clearways, for Broadgate, Preston, will make it easier for buses to park.

It follows concerns about traffic congestion when buses are stopping.

The clearways involve extra signs and road markings to keep the bus stop clear. Work is to start shortly.

Three clearways will be introduced. Similar works are also in the pipeline for Lancaster Road in the city.

## Youngsters hit jackpot

THOUSANDS of pounds are now available to young people in South Ribble and Preston.

The money is administered through Lancashire Local committees and is used to turn people's good ideas into reality.

County Councillor Keith Young, South Ribble Lancashire Local chair, said: "Lots of young people have good ideas, but they don't have the money."

"Now the money is available – and we need people

## Thousands available for bright ideas

By Neil Graham

to get in touch with us and tell us what they want to do."

Recent grants have included £500 for South Ribble's Jackal Explorer Scouts and £200 to the 1st Gregson Lane Brownies, which is also based in

South Ribble. The Jackals will use the money to partly pay for repairs to their camping hut, while the Brownies plan to buy craft materials.

All applications are considered by members of Youth Councils before recommendations are made to the Lancashire Local committee.

## Simple

Councillor Young said: "Bids can come from registered youth groups, but also from unofficial groups of young people. We want to make the process as simple and as unbureaucratic as possible."

"Lancashire Local committees want to support youngsters and voluntary groups in their work with others and we want to do it at grassroots level."

"As well as helping young people, we hope that making an application will help people gain an understanding of how local democracy works."

## FROM VISION TO REALITY

ANYONE who wants more information should telephone 01772 450800 for South Ribble or call 01772 554400 for Preston. You can also log on to [www.lancashire.gov.uk/yps](http://www.lancashire.gov.uk/yps)

## Acorns is a class act

PRESTON has seen the reorganisation of three all-age special schools into one primary and one secondary school.

Three special schools have been turned into two, with Acorns Special School now taking the primary age children.

Headteacher Steve Artis said: "It has been a really successful changeover and all the pupils are very happy with it. Before the move each pupil put together 'A Book About Me', in which they described their likes and dislikes, what made them angry and what they needed in terms of personal help, which made the transition easier."

Mr Artis asked some of the children how they felt since the move and their comments included: "I really like my new friends", "The football doesn't get stuck on the roof any more", "The food is nicer", "I was picked on before but I'm not anymore" and "The computers are better".

Sir Tom Finney High is the new community secondary special school. Both

schools meet the needs of children and young people with a wide range of learning difficulties.

County Councillor Vali Patel, Cabinet member for schools explained: "We have a very vibrant special school sector in Lancashire, which we value greatly. We are currently investing substantially in reorganising and refurbishing these schools to equip them for the 21st century."



● HAPPY DAYS: Steve and teacher Pauline Clarkson with pupils at the new school.

## £300,000 for coroner's court

MORE than £300,000 is being invested to provide new premises for the coroner's court in Preston.

The new building, at Faraday Court in **Fulwood**, will feature two court rooms for inquests and private rooms for Preston and **South Ribble** families and legal representatives.

County Councillor Anne Brown, Cabinet member for adult and community services, said: "The current court and office is not ideal in this day and age."

"Many of us will have contact with the coroner's

service at some point in our lives – people deserve an effective and modern service at what is a very sensitive time for families."

"This building will be spacious and meet the needs of a modern service."

Approximately 40 per cent of all deaths are referred to the coroner who issues a certificate allowing bodies to be buried.

A relatively small proportion of deaths require further medical investigation and an inquest.

The new building is expected to open in February.

## Free Part Time Nursery Education places in Lancashire for 3 and 4 year olds

If you have a child born on or between 1 January 2004 and 31 December 2005 your child is entitled to a free part-time pre-school nursery education place from the start of the Spring Term 2009 commencing in January.

A free place consists of a maximum of five sessions per week and no more than fifty-five sessions for the Spring term. A free session is for a period of 2.5 hours in length. There are three terms in the year, covering a total of 38 weeks.

Places are available from any of Lancashire County Council's eligible providers of pre-school nursery education.

These can be Local Authority (LA) maintained nursery schools and nursery classes, providers in the independent, private and voluntary sectors or accredited childminders on an approved National Childminding Association (NCMA) Children Come First Network.

Further information including a Parent Guide and a list of eligible providers within your area may be obtained from the Childcare Information Service on Freephone 0800 195 0137.

SureStart

Lancashire  
County Council



## FYLDE / WYRE

Down your street

## Steve's on cue as teens get a break

SNOOKER legend Steve Davis chalked up another success when he opened a new learning programme in Wyre to help young people get into work and training.

E2E – education to employment – was unveiled in Fleetwood to provide a service for 16-18 year olds who have missed out in school.

Operations Manager, Nighat Parveen, explained: "We wanted to increase opportunities for young people in Wyre to get into full-time education or employment with

training. Along with Beneast, the only other learning programme in Fleetwood, E2E will have a positive impact on young people's prospects locally, particularly those who left school with few qualifications."

The E2E scheme aims to give them the opportunity not just to get qualifications like AQAs and NVQ level 1, but to gain confidence as well as the basic skills such as literacy and numeracy.

At the end of last year organisers had more than 30 teenagers enrolled on a course, with more expected this year.



● SUPPORT: Snooker legend Steve Davis with Nighat and guests at the opening event.

# A £23m facelift plan for ageing primaries

WYRE has been chosen to benefit from the first wave of a £1.9bn government cash boost for ageing primary schools.

At least £23m will be made available in Lancashire in the next two years.

And some of the primary schools in Wyre are in line to benefit first.

Since the Primary Capital Programme was approved, education

By Ginny Bridgewater

bosses at County Hall have been consulting with Wyre schools to help draw up Lancashire's strategy to target areas of greatest need.

County Councillor Vali Patel, Cabinet member for schools, said that the funding would be a "fantastic boost".

He added: "Children in Wyre deserve a good education as much as anyone else. This will change the lives

of so many young people throughout the area.

"It is not just a quick fix. It is a long-term, planned approach to setting up a primary school infrastructure that will be the pride of the county and will give children the best possible start in education for years to come.

"It's time to give them decent schools with modern facilities that will encourage them to take advantage of a good education, paving the way for a bright future and setting

a high standard for education across the county."

A number of factors were taken into account when looking at where the first investments should be made.

They included things like the age and condition of buildings, the deprivation of the surrounding area, surplus places, test results and popularity of schools.

The names of the first schools to benefit from the scheme have not yet been announced.

## NEWS BRIEFS

### Bus problem a driving issue

A SHORTAGE of buses to and from Clifton Hospital is being taken up by County Councillor Bernard Whittle.

He will take the matter to Fylde's Local Strategic Partnership after fellow councillors debated the issue of parking near to and at the hospital. Councillors on Fylde's Lancashire Local committee heard that the hospital already had suitable parking controls in place.

### Local voices

MEMBERS of the public are welcome to attend decision-making meetings of Lancashire Local committees in their area.

The committees unite Lancashire County Council and district councils so that policies and services are tailored to each area.

The next meeting of the Lancashire Local Wyre will be held on February 11 at 7pm in the Frank Townend Centre, Cleveleys.

The next meeting of the Lancashire Local Fylde will be held at 7pm on January 27 at a venue to be arranged.

### Moving ahead

A START may be made on the southern section of the M55-to-Heyhouses link road in the spring.

Members of Fylde Lancashire Local – formed by members of Fylde Council and local members of Lancashire County Council – heard that all necessary compulsory purchase orders and side road orders had been made and advertised.

### Team scores

EXTRA cash is on the way to two voluntary groups.

Staining under-8s football team and Lytham Parochial Church Council are gaining £250 from County Councillor Tim Ashton's Lancashire Local "pot".

Each county council member of Fylde Lancashire Local has £1,250 a year to use to help and support civic-minded and public-spirited groups.

## On the road to good advice



● MOBILE HELPERS: Customer service staff Joceline Greenaway and Andrew Loynd with the Fylde vehicle.

ALL aboard for help and advice. The Mobile Information Gateway is hitting Fylde's roads from this month.

It follows a successful trial of the "Community Engagement Vehicle" during last summer.

Representatives from Fylde council, the county council and the Local Strategic Partnership will be on board to answer questions and deal with enquiries relating to all council and partner services.

Benefits advice will also be available to people and the Fylde Low Waste and Energy project is supporting the initiative with the project officer attending once a month to provide energy efficiency advice.

Starting on Thursday, January 22, you can find them at Freckleton (in front of the Coach and Horses car park) on the first Tuesday of every month 10am-4pm and Kirkham (Morrison's car park) on the third Thursday of every month 10am-4pm.

## Pear Tree is top of the class

A SPECIAL school in Kirkham has been awarded the highest accolade from the school inspector Ofsted.

Inspectors who visited Kirkham Pear Tree School described it as "an outstandingly successful school".

And they also quoted a parent who said: "When our child joined Pear Tree, the whole family joined."

Headteacher Lesley Koller, who was praised for her "exceptional leadership and management," said: "I'm very proud of everything we've accomplished at the school."

"And I'd like to thank the staff, pupils, parents and governors for their wonderful contribution to our success."

"We teach children and young people aged from two to 19, many of whom have profound and multiple disabilities, and they are absolutely thrilled to know the report recognises their tremendous achievements." Pear Tree was awarded top marks in all aspects of school life by the inspectors who

visited – from the Foundation Stage where young children "come on in leaps and bounds," through to the "excellent teaching" that helps sixth formers "gain the necessary self-confidence and independence to make their own choices and to prepare for adult life."

## Church gets green boost

A PARISH church is to receive £4,388 to help in Lancashire County Council's fight against climate change.

A total of £250,000 a year is made available to local groups through the county council's Climate Change Fund – and Hambleton Parish Church has been given

money to replace an old and inefficient central heating boiler.

The criteria for the grant are that projects should aim at either reducing greenhouse gas emissions or help communities cope with the impacts of climate change.

The next deadline for Climate Change Fund Grants is January 31.

## Free Part Time Nursery Education places in Lancashire for 3 and 4 year olds

If you have a child born on or between 1 January 2004 and 31 December 2005 your child is entitled to a free part-time pre-school nursery education place from the start of the Spring Term 2009 commencing in January.

A free place consists of a maximum of five sessions per week and no more than fifty-five sessions for the Spring term. A free session is for a period of 2.5 hours in length. There are three terms in the year, covering a total of 38 weeks.

Places are available from any of Lancashire County Council's eligible providers of pre-school nursery education.

These can be Local Authority (LA) maintained nursery schools and nursery classes, providers in the independent, private and voluntary sectors or accredited childminders on an approved National Childminding Association (NCMA) Children Come First Network.

Further information including a Parent Guide and a list of eligible providers within your area may be obtained from the Childcare Information Service on Freephone 0800 195 0137.

SureStart

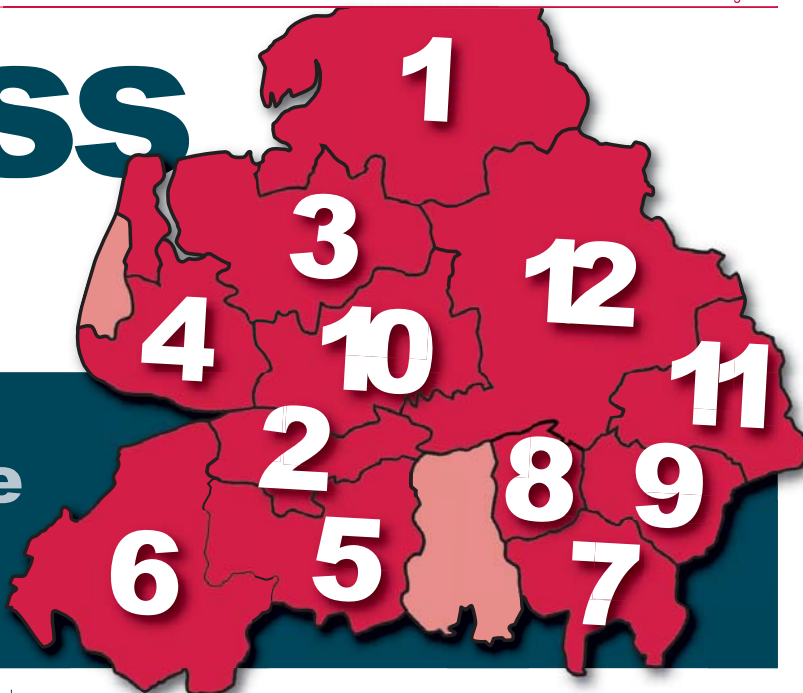
Lancashire  
County Council





# Success for all

**Lancashire County Council is helping make Lancashire a more prosperous place.**



Through its economic development company Lancashire County Developments Limited (LCDL), millions of pounds has been invested by Lancashire County Council to ensure new businesses can start leading to new jobs and economic growth.

Over the past four years LCDL has delivered £80million of economic development such as creating or securing over 1,500 jobs and supporting hundreds of private sector companies, social enterprises and organisations.

The county council has created projects that enable companies to save thousands of pounds by utilising environmentally friendly technology that produces sustainable energy. The authority has also pumped hundreds of thousands of pounds into rural schemes to help sustain these economies.

Through projects such as Grants for Growth, now in its third year, hundreds of people have been helped back into work, many from deprived backgrounds. This brings down the reliance on the state, helps build better communities and enables people to help themselves and their families.

Other projects such as the shop front schemes in Kirkham and St Annes have seen businesses gain funding that improves their businesses, helping make areas more attractive to shoppers and growing local economies.

Steve Dean, managing director of LCDL, said: "We have invested in the future economic security of Lancashire. We recognise the seriousness of the economic climate at the present time but also know that people can have confidence in the growing number of businesses and employment opportunities that we and our partners in the private and public sectors are working hard to provide."

Lancashire County Council leader Hazel Harding said: "The facts presented on these pages show how Lancashire County Council has not only invested heavily in the county but has proved its effectiveness at bringing in huge investment from the private sector, national government agencies and Europe."

"We should be proud to shout about how wonderful Lancashire is as a place to work, live and play in and we will continue to voice this enthusiasm at every level."



Adrenaline Gateway, just one of many regeneration projects being undertaken by Lancashire County Council.

## 1 – Lancaster and Morecambe

Carnforth Business Support, £125,000 to support businesses in expansion and refurbishment resulting in 79 jobs.

### LUVU- Lancaster

The project supported forty people from disadvantaged and vulnerable groups to develop new skills including two directly into employment.

## 2 – South Ribble

£100,000 new partnership with South Ribble, Chorley and Preston City Council to provide financial and business support to small and medium-sized companies.

## 3 – Wyre

Lancashire County Council is helping to revitalise the fishing industry with around £16/17m providing up to 150,000 sq ft of new commercial floorspace and helping to safeguard up to 600 jobs within Fleetwood,

## 4 – Fylde

### St Annes Shop Frontage Improvement Scheme

Scheme initiated and led by Fylde Borough Council and LCDL with £150,000 funding leveraging over £800,000 private sector match-funding to date. Over 7,000 sq ft of new lettable space created, 12 jobs created and 18 businesses assisted.

## 5 – Chorley

Secured Euro funding to enable two companies to continue trading which secured 103 jobs, created six new jobs and brought in £250,000 of private sector investment.

## 6 – West Lancashire

### B De-Stressed Project – Skelmersdale West Lancashire

This project worked with young people to provide an alternative work-focused employment enabling them to gain new skills and AQA accreditation.

## 7 – Rossendale

Adrenaline Gateway working with partners Rossendale - LCDL investment to date £163,000. Delivery of mountain bike trails and trials areas in Lee Quarry, Bacup and the delivery of a very successful "test" event in July 2008 which attracted 960 people.

## 8 – Hyndburn

### Lords House Farm

This project used an environmental arts project to engage, support and train unemployed and excluded young people. Participants worked with a local artist in the design and production of a mosaic at the Farm and gained skills in design, planning and working in groups. The project built the trust, skills and confidence of 22 young people and helped them into further education and/or employment.

## 9 – Burnley

£50,000 to help Turf Moor create Enterprise Haven which provides business premises and brings in over £1 million government funding. Part of the Local Enterprise Growth Initiative (LEGI) programme.

## 10 – Preston

Preston Partnership Scheme – working with a private sector development partner and Preston City Council to deliver a mixed use retail, office and leisure scheme in support of the jobs and growth agenda across an area of up to one hectare within Preston City Centre. Potentially up to a £50million project.

## 11 – Pendle

Part of partnership that creates Nelson Innovation Centre providing affordable business premises as well as conference facilities.

### Caring Today – Pendle

The project provided after-school provision to allow parents/carers of children with learning difficulties/disabilities to access training and to enter and sustain employment. The project supported 21 people to develop their skills, confidence and experience of work. A second project provided supported employment for three young people with learning difficulties/disabilities including work experience and training in respite care and administration work within the organisation.

## 12 – Ribblesdale

Ribble Valley – LCDL working in partnership with Hyndburn, Rossendale and Ribblesdale Valley LEAD Group, Ribblesdale School, Ribblesdale Borough Council to create a vocational learning centre in the Ribblesdale Valley catchment area to provide applied learning opportunities for young people and adults.



## Rosebud

Lancashire County Council's award winning finance project has helped companies whilst bringing in millions of private sector funding. The fund invests £1.6m per year providing around £5m of private sector investment. Business support is offered to all companies wishing to take a loan of £5,000 upwards and the fund is currently helping to create 30 to 40 new companies a year.



Ecclestone's The Bear Hut children's activity centre expanded its services and employs 18 staff thanks to help from Rosebud Finance.

## Grants for Growth

A grant fund offering up to £6,000 to organisations and individuals who help disadvantaged people back into work. Since its creation the fund has helped over 200 organisations across the county – 3,526 unemployed people supported, 344 entered employment, 717 into full time education or learning, 2,267 assisted towards employment, 1,047 gained a recognised accredited qualification. The fund has been so successful that Grants for Growth 2 has just been launched.



Skelmersdale's Brighter Futures has helped hundreds of disabled and disadvantaged young people gain qualifications thanks to Grants for Growth.



## Rural Development Grants

Developed as joint funding in partnership with the North West Development Agency, Lancashire County Council has awarded over £2.5m in grants which has seen over 100 projects supported, more than 300 jobs created/safeguarded and over 16,000 m<sup>2</sup> of business floorspace developed.



Taylor's Opticians in Longridge expanded its premises and increased its staff thanks to a Rural Lancashire Development Grant.

## Micro Finance

Business Venture Group is the company that is piloting Lancashire County Council's micro finance project. Called Kickstart, the fund offers loans of up to £5,000 to those located in West Lancashire wishing to start a business. So far over 30 new businesses from plumbers to a dog clipping service have been created.

## Local Enterprise Growth Initiative

Lancashire County Council is a partner in the business development LEGI project. Aimed at businesses and individuals in East Lancashire, the project is designed to lend money to those wishing to start or expand a business whilst also helping out and funding people back into work. So far businesses have been helped whilst six social enterprises have received loans of £10,000 each.



Accrington social enterprise Ensign Energy Limited is helping get people back into work thanks to funding through the LEGI project.

## Tourism

As a key partner in Lancashire and Blackpool Tourist Board, Lancashire County Council has helped fund and support tourism projects such as the undergraduate scheme which placed students in businesses across the county giving the young people valuable work experience whilst also helping the business with their marketing plans. Lancashire County Council has also helped several hotels gain a national star quality award and helped many tourism businesses go green by getting a national Green Tourism Business Scheme rating.

## Managed Estates

Lancashire County Council owns and manages business accommodation in Leyland, Lancaster, Burnley and Nelson housing over 250 business tenants.

## Creative Lancashire

Lancashire County Council supports creative industries such as media, web and the arts. So far we have supported £1.6m of increased sales for small to medium-sized companies, helped create 21 new jobs and assisted 150 creative businesses. The work of the Film and TV Office has helped secure £3m worth of film and TV productions within Lancashire.

## Apprenticeships

Lancashire County Council has helped long-term lone-parent and incapacity benefit claimants back into work with over 1,000 apprenticeship frameworks begun in public sector organisations.



JD Carpets in Bacup has employed Shane Derbyshire through Lancashire County Council's apprenticeship scheme.

## Credit Crunch support and advice

Lancashire County Council recognises that these are difficult times. Although the authority can't take away the anxiety and pressures that the present financial climate puts on business and individuals, it can offer help and support.

Lancashire County Council is working with its partners to provide a list of contact numbers that will put you in touch with someone who can help. Lancashire County Council's helpline is constantly being reviewed to ensure you receive the latest information and help.

Lancashire County Council **0845 053 0000**  
 Business Link **0845 0066888**  
 Chambers of Commerce – Blackburn **(01254) 356400**  
 Chambers of Commerce – Preston **(01772) 653000**  
 Enterprise Agencies – Blackburn **(01254) 600625**  
 Enterprise Agencies – Preston **(01772) 442242**  
 Lancashire and Blackpool Tourist Board **(01257) 226603**







**Don't give  
childcare the  
red card - be part  
of the decision.**

**Lancashire**  
County Council

**LANCASHIRE  
Childcare  
INFORMATION  
SERVICE**

**YOUR CHILD  
COULD BE THE  
NEXT CLUB  
MASCOT!**

**ENTER AT:  
WWW.LANCASHIRE.GOV.UK/CHILDCARE  
OR CALL  
US ON: 0800 195 0137**

**WESTERN  
PACIFIC  
AIR**