

Vision

www.lancashire.gov.uk

2006-2007
Positive Youth Engagement
(in the community and
democratic process)
2007-2008
Healthy Schools
2008-2009
Improving Accessibility

Beacon
Authority



FYLDE / WYRE • CHORLEY / WEST LANCASHIRE • PRESTON / SOUTH RIBBLE • HYNDBURN / ROSSENDALE • LANCASTER / RIBBLE VALLEY • PENDLE / BURNLEY – see p5



SPRING CLEAN

It's got to
be done

Page 8



FAMILY AFFAIRS

See how we can
save you cash

Page 6/7

BRIGHT FUTURE

Streetlight trial could
save money and power

Page 3

WANTED: 100 SUPER-PARENTS NOW

Could you give a child
a fresh start at life?

By Andy Swain

A CASH boost could help hundreds of vulnerable children and young people who need foster carers in Lancashire.

The Fostering Service aims to recruit 100 foster carers a year over the next three years – thanks to investment to improve the allowance carers receive.

These additional carers will ensure that each child's needs are met by their foster placement by enlarging the pool of carers.

County Councillor Jennifer Mein, Cabinet member for Children and Young People, said: "We are making major investments as part of our commitment to achieve excellence by 2011.

"Fostering plays an essential role in ensuring that Lancashire's children are safe, healthy and enjoying life in their own communities.

"It also offers the opportunity for people to enrich their lives by offering a good home to children.

"This campaign emphasises the very real positive benefits offered by

fostering both for the foster carer and the children themselves."

The county council has recently carried out a review of fostering, including widespread consultation with existing foster carers.

Improved allowance

Resulting changes include improved allowances and access to training for foster carers.

Helen Denton, executive director for Children and Young People, said: "We are looking for people from all backgrounds and from all parts of the county.

"We are committed to rewarding our excellent foster carers and attracting new carers to do this incredibly rewarding work.

"We aim to provide the best possible start for the county's most vulnerable children and young people.

**REACH OUT
TODAY**

Call our fostering recruitment team
on 0800 1951183 or visit
www.lancashire.gov.uk/fostering



'We cracked it - so can you'

VICKY and David Heap, from Ightenhill, Burnley, started fostering three years ago.

Vicky said: "I was fostered as a child and my sister has been fostering for 30 years. We wanted to provide a safe, caring environment for children who didn't have that luxury.

"It was a big decision but the rewards can be the most wonderful feelings in the world, from a hug from a child who knows they can trust you, to seeing them smiling and comfortable in your family and fitting in well at school. And when they start to answer you back you know you've cracked it!"

Council tax goes up 2.9% to help young

A BOOST in the fight against crime and extra apprenticeships for young people are included in Lancashire County Council's budget for the next 12 months.

Council Tax bills will rise by 2.9 per cent from next month.

New spending will fund 10 police community support officers and extra money to support Modern Apprenticeships.

An extra £6.2m is included for children's social care.

Below average

Forecast efficiency savings of £14.3m are expected with changes to staffing and working methods. Staff will not automatically be replaced when they leave.

County Councillor Hazel Harding, county council leader, said: "We're well aware that household finances are getting squeezed.

"At the same time we're seeing an increasing demand for some council services, such as welfare rights and economic development.

"It's vital at this time that we continue to support residents."

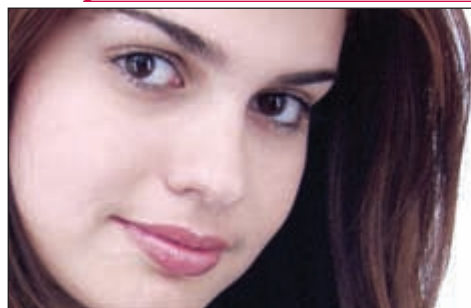
The county council's Council Tax precept has increased by 15 per cent between 2004 and 2009 – considerably below the national average.

The county council has a total annual budget of £715m, which includes highways, social care, youth services, education, museums and libraries.

A cassette version of Vision is now available for visually impaired people from Galloway's Society for the Blind by calling 01772 744148

The presence of promotional leaflets delivered inside Vision does not imply Lancashire County Council endorsement.

YOUR LANCASHIRE: A PLACE WHERE EVERYONE MATTERS



**A full job description
of all vacancies is available
on our website**

www.lancashire.gov.uk/vacancies



Ask Shirley

**Don't know who
to contact when
you need help?**

**Baffled by
bureaucracy?**

Ring Shirley on
0845 053 0000 or email
Shirley on **csc.enquiries@
lancashire.gov.uk**

Write to:
Ask Shirley
Customer Service Centre
The Red Rose Hub
Bluebell Way
Preston
PR2 5PZ



ASK THE EXPERT

Questions
answered
by your
friend in
the know

Action NoW

I appear to have misplaced my NoWCard. I think that I have left it on the last bus journey that I made. Could you please advise me of how to get a replacement?

Mr I Bond, Rishton

You should wait at least two weeks to see if the card is returned. One suggestion could be contacting the bus station to see if anyone has handed it in. If the card does not reappear then a replacement can be obtained from your district council - in your case, **Hyndburn**. There is a fee of £10 to get a replacement but no new photographs or proof of eligibility are required. You will need to visit the Hyndburn Council office and arrange for a replacement card to be sent to you within a few working days. For more information, contact the NoWCard helpline on **0845 0581096**.

On the level

I have lived on the same street for many years and the street is now starting to show some signs of potholes and cracks in the pavement. This is very uneven to walk on especially for a mother with a pram. What is the formal procedure for reporting it to Lancashire

*County Council.
Mr D
Ratcliffe,
Colne*



● **SCHOOL admissions letters are only days away. See 'Any day now' (below).**

You would need to get in contact with Lancashire County Council Highways Department, where a customer service officer will arrange for an engineer or inspector to investigate. You will be given a reference number which you can keep for your records. Lancashire County Council Highways Department can be contacted on **0845 0530011**.

Alternatively you can send us an email with details of your query to **highways@lancashire.gov.uk** and your query will be logged in the same way.

Bin there

Our bin got damaged in the recent terrible weather and the bin lid is now missing. This is becoming a problem with the local cats as I am forever finding them having a rummage in the bin! Could I get a new one?

*Miss E Harper,
Clayton-le-Woods*

The refuse service is dealt with on a district level, so you need to contact your district council. Your district council is **Chorley** which can be contacted on **01257 515151**. All district council numbers can be found on the Lancashire County Council website: **www.lancashire.gov.uk** or you can contact the Customer Service Centre on **0845 0530000**. District councils are responsible for collection of waste while Lancashire County Council is responsible for finding ways to dispose of it.

Apply within

I am one of the sufferers of the "credit crunch" and was made redundant five weeks ago. After the initial shock I started to look for jobs. I am open-minded and willing to try anything that I could get my hands on. How would I apply to Lancashire County Council. Can I send a CV?

Mr O Hill, Lancaster

We are sorry to hear of your redundancy. Lancashire County Council does have job vacancies. Unfortunately we can't store CVs. All our vacancies are advertised on our website and in local newspapers. You can visit our website at **www.lancashire.co.uk**

Any day now

My son is due to start secondary school in September. I have applied online but haven't heard much since. Should I have found out by now which school my son will be going to?

Mrs V Martin, Chipping

The results of the secondary school admissions applications for pupils starting in September will be available by 2 March 2009. Letters confirming places will be sent out on 27 February 2009. All parents/guardians will be informed by letter regardless of how they applied. For parents/guardians who applied online, results will be available online from 8pm on 27 February 2009. For further information, please contact the School Admissions Team on **0845 0530030**.

New safety drive after car shocker

LANCASHIRE'S motor traders are being warned to ensure the cars they sell are safe following a joint operation that revealed that 16 per cent of secondhand cars were dangerous.

Staff from Lancashire County Council and the Vehicle and Operator Services Agency visited 12 garages across **Preston, South Ribble, Chorley and West Lancashire**.

Defects uncovered included defective brakes, a faulty steering rack, worn tyres and dangerous seatbelts. County Councillor Marcus Johnstone, Cabinet member for Community, Planning and Partnerships,

said: "It's frightening to know that 16 per cent of the used cars examined were found to be dangerous."

"It is essential that cars sold to consumers are fit for the road. An unsafe car presents a danger to the driver and pedestrians."

A total of 57 cars were inspected. The law requires that all vehicles sold for use on the roads be in a road-worthy condition.

Enforcement action will be taken against dealers selling unsafe cars.

Two of the offending garages were in Preston and one was in Chorley.

Anyone suspecting that they have purchased a dangerous motor vehicle should contact Consumer Direct on **08454 040506**.

Cyclists dig Bowland trail



VOLUNTEERS and cycle enthusiasts have teamed up to provide a trailblazing new cycle route in Gisburn.

The first new stretch of cycle trail is now reaching the 1km mark after thousands of barrow-loads of soil and stone were moved.

The project, which has been running for six months, is a co-operative venture between Lancashire County Council, the Forestry Commission, the Forest of Bowland Area of Outstanding Natural Beauty, Ribbles Valley Council and United Utilities.

free

Part-Time Nursery Education places in Lancashire for 3 and 4 year olds

If you have a child born on or between 1 April 2004 and 31 March 2006 your child is entitled to a free part-time pre-school nursery education place from the start of the **Summer Term 2009** commencing in April.

A free place consists of a maximum of five sessions per week and no more than sixty-five sessions for the Summer term. A free session is for a period of 2.5 hours in length. There are three terms in the year, covering a total of 38 weeks.

Places are available from any of Lancashire County Council's eligible providers of pre-school nursery education.

These can be Local Authority (LA) maintained nursery schools and nursery classes, providers in the independent, private and voluntary sectors or accredited childminders on an approved National Childminding Association (NCMA) Children Come First Network.

Further information including a Parent Guide and a list of eligible providers within your area may be obtained from the Childcare Information Service on Freephone 0800 195 0137.

Enter the dragon as county joins New Year party

CHILDREN from across Lancashire have been learning all about Chinese culture in the run-up to this year's Chinese New Year.

And in **Lancaster**, they teamed up with the area's Chinese Community Association to make and parade a traditional dragon.

Libraries across the county took part in Chinese art and drumming events which were attended by pupils from local schools.

Awake

The Lancaster youngsters, pictured right, took part in the traditional Awakening of the Dragon ceremony.

The ceremony involved waking the dragon from its long sleep with music and dance.

Kim Leong, chair of Lancaster and **Morecambe Bay** Chinese Community Association, said: "This project has helped strengthen links for the Chinese community, as well as bringing an understanding of Chinese culture to local schoolchildren.

"People enjoyed making the dragon as well as playing Chinese music to accompany the dragon dance."



●AWAKE! Children from Dallas Road Primary School, Lancaster, parade the dragon to wake it from its annual sleep.

NHS told to speed reform

A HARD-HITTING report has called for a major shake-up to health provision in east Lancashire.

Health chiefs are being told by county councillors that recent changes were badly carried out.

It is 16 months since Blackburn Royal Hospital became the centre for emergency care while **Burnley** became a centre for elective procedures.

Since then mortality rates have reduced, complication rates have reduced, MRSA infections have reduced and acute coronary cases are getting better care.

County Councillor Tim Ormrod, task group chair, said: "The answer is clear: patient outcomes are better.

"Before the changes, 99 patients died in hospital each year. That has dropped to 54.

"But there are problems. Blockages have been caused by the 'patient pathway' - by patients turning up at the Emergency Department at Blackburn when they could have gone to other facilities.

"The medical assessment unit which decides the level of care needed has also been getting full because patients are not being discharged smoothly."

The report recommends construction of a new medical assessment unit in Burnley, new urgent care centres in Rossendale and Accrington, and the opening of neonatal facilities in Burnley to reduce pressure on Blackburn.

Streetlight trial may be double winner

By Martin Crabtree

THE future for Lancashire's climate could be bright thanks to high-tech plans to vary light output from streetlights in the county.

The county council's street-lighting engineers are about to begin a trial of state-of-the-art LED equipment which has the potential to drastically reduce the county council's carbon emissions and energy bills.

Martin Dunwell, street-lighting manager, said: "We have 145,000 streetlights in Lancashire and they are on at full power all through the night

"The new technology we are testing allows us to control streetlights remotely and wirelessly. This means that the power can be reduced, to save energy at times when less light is needed, also leading to reduced

Super-bright LED lights can save money and the environment

light pollution.

"We use the most energy-efficient lamps and control gear possible, but these LEDs offer far more flexibility.

Efficient

"In fact, the LED lights are more energy-efficient than standard lamps, even if they are left on at full power in the same way as the lights at the moment."

County Councillor Matthew Tomlinson, Cabinet member for Sustainable Development, said: "Other councils in the country have tried to save energy by simply turning lights off in urban areas and now they are having to reverse their decisions.

"Streetlights have evolved massively from the days of hand-lit gas lamps. Once they had to be lit by hand, now we can control them remotely.

"Now we have the capability to save money and reduce carbon emissions by as much as 30 per cent. This is a big step forward for us in the fight against climate change."

The first LED lights will be installed for a trial in four **Preston** streets.

It is expected that the rest of the county will start to see the new technology appear over the next five years as lights are replaced as part of the normal lighting maintenance programme.

Tudors step in to soup up lessons



●BACK to the future: from left, teacher Alan Henderson, adviser Julian Sims, adviser Fiona Revell, executive director Helen Denton, trade unionist Sarah Pearce and trade unionist Carvel Lonsdale.

ENGLAND'S colourful cuisine is to bring history and the environment alive in Lancashire's primary schools.

For while children elsewhere are dusting off their textbooks, Lancashire's youngsters will be cooking Tudor soup to compare it with modern food.

Some of the pupils will even be growing vegetables before cooking them.

Other ideas to put green ideas at the heart of the curriculum include using natural objects such as tree bark to inspire children to write and draw, and making sustainable building materials by mixing soil with soap flakes, eggshells and straw to see how they compare with modern materials.

Changing lifestyles

The innovative ideas were hammered out at a **Borwick** conference involving teachers and other educationalists.

Helen Denton, Lancashire County Council's executive director for Children and Young People, said: "Teaching children and young people about saving and conserving the world's resources is one of the most important things that we can do to change the attitudes of future generations.

"The sustainable schools framework stretches out into the community and will ensure that schools lead the way in demonstrating how our lifestyles must change.

"This can have real benefits for our local, national, and global environment."

NEWS BRIEFS

Family tree £4.3m boost

LANCASHIRE County Council is to invest over £4.3m to re-store and refurbish its county Record Office.

The office stores records of things such as births, deaths, marriages and census records - and is a valuable aid to people researching their family tree.

Work will involve:

●Replacement of existing storage space.

●Additional archive accommodation, providing additional capacity to house 30 years of future collections as well as specialist storage for photographs and digital material.

Established in 1940, the Lancashire Record Office collects, stores and looks after historic records and documents of enduring historical value to the county dating from the 12th century to the present day.

Vote for me

PEOPLE considering standing for election as a county councillor can learn more at a special event.

Voters will elect county councillors on Thursday 4 June this year - and ordinary citizens have the right to stand for election.

An information evening will take place on Monday 23 March, from 5:30pm-7:30pm, at County Hall in Preston.

There will be presentations about the work of councillors and the election process and opportunities to ask questions.

For details, contact Roy Jones on 01772 533394 or email roy.jones@lancashire.gov.uk

Cash job

PEOPLE on sickness or disability-related benefit could get a £200 back-to-work payment.

Connect to Work offer support, job skills training, career advice and up to £200 funding to help find and keep a job.

They will help with CV and interviews as well as job applications and Return to Work Better Off benefit calculations.

For details, call 0800 988 2265 or visit www.a4econnecttowork.co.uk.

Top level

YOUNG people in Lancashire consistently score higher than the national and North West averages at A-level (Level 3).

In 2007 Lancashire's young people scored an average of 213 points per exam entry compared to the national and North West average of 204 points.

In 2008 Lancashire's results were just as good - keeping the county in the top quarter of the level three league tables. The A-level Performance System (ALPS) describes Lancashire as adding "excellent" value.

Fishy story

EVERYONE has seen the underwater life of Australia's Barrier Reef - but few know the wildlife of Britain's shores.

So members of Clitheroe's Reefers' and Wreckers' Club have organised a slide show and talk to fill the gap.

Everyone is welcome at "The Life and Colour in our Northern Waters" to be held at Clitheroe Conservative Club at 7pm on 14 March.

Text award

LANCASHIRE has the best helpline for young people, according to national judges.

The line to What Now? was voted best helpline in the national BT and Telephone Helplines Association (THA) Awards for its work in supporting diversity - and its innovative use of texting.

NEWS BRIEFS

£950,000 to get young on the net

LANCASHIRE County Council has successfully put together a £950,000 scheme to ensure that children without home access to IT don't miss out.

The "Home Access" scheme targets those children the county council is responsible for, such as looked-after children – more than 700 will receive a mid-range laptop computer and a year's internet access.

Lancashire's Learners Out of School Service will create a bank of computer facilities for children and young people, who may be unable to go to school for a variety of reasons.

The council's Early Years Service will also create a bank of 100 "Home Access Units".

Think ahead in case of trouble

THE emergency services have come up with a simple way to find out who to contact if someone dies or is seriously injured.

The dilemma has previously been that looking through someone's mobile phone contacts could lead to the wrong person being informed.

Emergency services such as police and fire crews now ask that people enter ICE (In Case of Emergency) in their phone contacts list with the name and number of the person they would like to be contacted if the worst comes to the worst.

It is hoped that the scheme will make it easier for emergency staff and better for relatives.

Apprentice boost for Lancashire firms

APPRENTICESHIPS give a solid start in life to young people.

So Lancashire County Council is going all out to encourage companies to take on apprentices.

At least 24 firms have employed apprentices with county council support in the last eight months.

And a huge effort has now started to place 36 more young men and women in local firms under the Supported Apprenticeship Programme.

Private sector firms, Lancashire County Developments Ltd (LCDL) and the Learning and Skills Council are funding the programme - with cash support for employers.

Weekly payments of £60 may be available for bosses who take on apprentices. Payments reduce to £40 in

the second year.

County Councillor Niki Penney, Chair of LCDL, said: "We all know the economic climate is tough at the moment. At times like this no one would blame companies from not taking on new employees.

"We can now give them the backing they need to take on young people."

Paid workers

LCDL now wants to hear from small- and medium-sized businesses which think they could support a young person to complete an apprenticeship. All geographical and business areas are needed.

Another scheme has already seen 24 employers take on apprentices ranging from a carpet fitter to a chef.

Councillor Penney added: "It is fantastic that these companies are not only giving young people a career, but also giving their businesses a much-needed extra pair of hands.

"There is great evidence that apprentices do well throughout their lives and careers - and we all want to see working people doing well and making money."

The support for 60 apprentices is aimed at matching young people aged between 16 and 19, who are not in education, training or employment, to a small- or medium-sized business in Lancashire.

They will complete a level-two qualification in their chosen vocational area or specialism.

Support will be provided by partner CXL and will include one-to-one mentoring, an employer handbook and advice

vice and guidance given to young people and the employer to ensure both benefit from the programme.

WINNING AT WORK

All 60 young people need to be matched to a business by the end of April 2009.

All inquiries from young people, parents, businesses etc should be made to Natalie Denman at CXL, 01772 642379.

There are more details at: <http://www.cxl-uk.com/pages/index.php?id=48>

It pays to get involved

YOUNG people working to raise awareness of underage drinking in Lancashire have won £20,000 at the Mentor UK CHAMP Awards.

The Lookout Alcohol website was developed by the Young Persons' Alcohol Project with the School and Communities Partnership Team and scooped the Young People's Involvement prize.

The awards recognise those working with children and young people to prevent alcohol misuse.



●THIRD year running: Julie is the county's top school caterer.

Cheers! Make mine a pint

THE Great British pint is to remain following an EU ruling that the country can continue to use it to serve beer.

Legislation agreed by the European Parliament will allow the UK to continue its use of the mile for roads, the pint for draught beer, cider and bottled milk; and the troy ounce for precious metals.

But drinkers and publicans are being warned by Lancashire County Council trading standards officers to avoid "metrication by stealth".

County Councillor Marcus Johnstone said: "Surveys conducted by Trading Standards have revealed a large head of an inch can amount to 10 per cent of the drink.

"That makes the measure closer to a half-litre than the traditional pint. If you think there is not enough beer, ask bar staff to top it up.

"Contrary to some reports there are no other changes to metric quantities.

"People may be under the impression that they will see a complete return to old-style imperial system of pounds and ounces, but this is not the case as most goods, from pre-packed goods to petrol, will be sold in metric quantities.

"However to preserve our traditions, labelling to show the imperial measure can now continue indefinitely."

WIN A BLACKPOOL WEEKEND BREAK AND DVDS

Holidaymakers have been staying at the Grand Metropole Hotel in Blackpool for generations. You could be there soon with a loved one, or a friend, for free – by entering this exciting Vision competition.

The Grand Metropole is located near the North Pier and the Tower and boasts 178 en-suite bedrooms (some facing the Irish Sea), a restaurant and games room. Every evening there's live entertainment in the hotel.

We'll also include six DVD runner-up prizes of British and American entertainers from the past.

Britannia is the largest privately owned hotel chain in the UK, with 33 hotels across the country: comfortable accommodation in the best locations, offering quality accommodation and services at value-for-money prices.

To be in with a chance of winning a Blackpool break or a DVD, just answer the question below correctly and send us your answer before the closing date of Wednesday 18 March 2009.

For further information about Britannia Hotels, including the Grand Metropole, check out www.britanniahotels.com or telephone central reservations on 0161 9230300. The prize comprises a weekend break for two in an en-suite hotel room, subject to availability.

Transport to and from the hotel and incidental expenses are not included. The break is to be taken within a time limit.

Send your entry to Britannia Comp, Vision, County Hall, Preston PR1 8XJ or enter online at: <http://www.lancashire.gov.uk/corporate/vision>

Which sea does the Grand Metropole Hotel face?

Answer
Name
Address
Email

Caterer Julie cooks up a trio of awards

HEROES from across Lancashire have been rewarded at a ceremony to celebrate the vital services provided by county council staff.

The Lancashire County Commercial Group awards evening hailed the work of staff across the county over the last year.

The wide range of services provided by the staff includes street lighting, road maintenance, gritting, fleet management, Travelcare, school catering, commercial catering, cleaning, school crossing patrols, passenger assistants, residential care and day care.

Julie Mitchell, from Stubbins Primary School, was nominated School Caterer of the Year for the third year running and was delighted to win the award this time round.

She said: "I absolutely love my job and I do work hard but it's really nice to be appreciated".

Julie (47), of Helmsore, has worked at Stubbins for 14 years and is also on a committee developing healthy school meals across the county.

She said: "I've got three kids myself and I know how important it is to feed them properly and give them a good healthy dinner."

County Councillor Tom Burns, Cabinet member for organisational development, praised the winners.

He said: "The staff who work for the commercial group are hard working and very dedicated.

"It's important that we take time to thank all our staff for their work. Without them, it wouldn't be possible to deliver the high standard of services to the public."

Readers' letters have been held over due to shortage of space

Letters for consideration in the next edition should be sent to The editor, Vision, County Hall, Preston PR1 8XJ

PENDLE / BURNLEY

Down your street

Sis' is my stunt double

BEING catapulted at high speed into the air might not be everyone's idea of fun.

But one fundraiser felt it was too good to miss, so she signed up her sister too!

Social worker Dionne Kennedy spelt double trouble for her identical twin Stella when she roped her into the simultaneous reverse bungee jump at the Apollo cinema in Burnley.

Dionne (43) said: "I didn't ask her, I told her. I said she had to do it because I said so, and I'm the eldest by half a minute!"

Dionne decided to raise money for Pendlebury Children's Hospital renal unit when a friend's young daughter fell ill and she realised how vital the service was to sick children and their families.

Sponsored by friends and family from as far away as Australia and the US, it is not

the first time Dionne has risked life and limb for a good cause.

She said: "I'm a bit of a daredevil. I did a parachute jump in 1989 to raise funds for the North Valley day nurseries in Colne."

"Then when my friend's daughter died I felt I wanted to do something again."

Both sisters live in Colne and Dionne's daughter Emma (15) cheered on her mum on the day, armed with a camera.

Dionne said: "The evidence is going straight onto my Facebook page so all those who sponsored me can see that I didn't chicken out."

"My husband Tony thinks that I am barking mad!"

Anyone who wants to retrospectively sponsor Dionne can contact dionne.kennedy@ssd.lancscg.gov.uk or call 07971 222143.



● DOUBLE TROUBLE: Twin sisters Dionne and Stella Kennedy took to the air in their bungee jump challenge to raise money for a local children's hospital.

NEWS BRIEFS

Councillors in the spotlight

THERE will be a Cabinet Question Time event at Christ Church, Cross Street, Nelson on March 17 at 7.15pm.

It allows members of the public to quiz leading county councillors about services, policies, politics... anything!

County council leader Hazel Harding, deputy leader Doreen Pollitt, finance boss Tony Martin, highways chief Matthew Tomlinson and development boss Tom Burns will be present.

Stress buster

MEDITATION classes are available for people in Burnley and Pendle looking for alternative ways to manage the stresses and strains of everyday life.

Kelsang Paljin is offering "How to Solve Our Anger Problems" classes on Wednesdays to March 25 from 7.30pm to 9.15pm at the Burnley and Pendle Faith Centre at Burnley Campus, Barden Lane. Cost £5.

For more information visit www.enjoymeditation.org

Class acts

PART-TIME casual workers are needed in Pendle to teach classes in citizenship.

The work includes teaching in primary and secondary schools. For an application pack contact Building Bridges Pendle on 01282 719303 or email office@buildingbridgespendle.org.uk

The view looks great!

BURNLEY and Pendle will benefit from a £1.97m conservation and regeneration plan to preserve and improve part of the South Pennines.

The Heritage Lottery Fund (HLF) has earmarked a Landscape Partnership Scheme award for the area.

The South Pennines Watershed Landscape, which is led by regeneration partnership Pennine Prospects, will cover 350 square kilometres of the South Pennines.

This area, consists of wide sweeping moorlands rich in wet bog, cotton grass, heathland and pasture.

£1.9m to preserve our lovely landscape

By Ginny Bridgewater

The project is made up of six parts, including getting people involved in the area's history and geology and enhancing key habitats for wildlife.

Stunning

They include the rare "twite" bird, which is also known locally as the "Pennine finch".

County Councillor Matthew Tomlinson, cabinet member for sustainable development, said: "We will work

hard to ensure that the money is used effectively to enhance what is already a stunning part of the county.

"Regeneration is about rural areas just as much as towns and cities.

"And spending almost £2m will go a long way towards safeguarding some of this country's finest landscapes and habitats."

Pam Warhurst, who is chair of Pennine Prospects, said: "The area also

faces some important challenges for the future.

"They include increased pressure for food production, renewable energy and flood prevention."

She explained: "This HLF money will help us conserve the landscape, improve the access to key sites, promote understanding of the heritage and engage people in managing future pressures."



● YOU BEAUTY: The lovely South Pennines.

Scouts are prepared

ST CUTHBERT'S Scout Group in Burnley is heading for the hills fully equipped thanks to a £3,500 county council grant.

Scout leader Neil Simpson said that the group would use the money to buy light-

weight tents for short camping trips.

He explained: "Getting the grant is absolutely brilliant news."

"At the moment we've only got large canvas tents that sleep eight, are bulky to transport and take a long time to put up."

"That means they are

really only suitable for larger excursions.

"With the smaller, lighter tents we'll be able to take smaller groups on short trips at very little notice."

Any money left over will be used by the scouts to buy lightweight stoves and other equipment.

New books are bags of fun

BURNLEY library has teamed up with UK charity Bag Books to provide stories for children with profound learning disabilities.

The Story-Go-Round training scheme has been touring the country since 2007, helping libraries supply suitable books to children.

Bag Books provides "multi-sensory" books that tell stories through the use of different objects, textures, shapes, sounds and smells.

Carole Wolstenholme, special needs

co-ordinator at Burnley library, has written her own story, CJ the Library Cat – a magical cat that lives in the library and jumps in and out of all the children's adventure stories.

She said: "I have always found Bag Books' multi-sensory stories encourage children of all abilities to become engaged in the wonder of story times."

Bag Books' multi-sensory stories are available in libraries across the county. For more information visit www.lancashire.gov.uk/libraries

Lancashire Adult Learning

new skills?

new interests?

new start?

For a wide range of learning and training opportunities

call now!

Preston, Lancaster, Fylde, Wyre:

01524 581269

Burnley, Hyndburn, Pendle, Ribbles Valley, Rossendale, Chorley, West Lancashire, South Ribble:

0845 600 1331

YOUR CHOICE for learning and skills

www.lal.lancashire.gov.uk



Lancashire Adult Learning

Lancashire County Council

CHORLEY / WEST LANCASHIRE

Down your street

It's great to get together at last!

CHILDREN at a **Burscough** school can finally get together in one place at one time with a roof over their heads, thanks to county council funding.

St John's CE Primary School was granted £700,000 to build a school hall after spending years having assembly in the playground or squeezed into one of the classrooms.

Three years after the school received the cash the new hall has been completed.



● FLASHBACK: Karen, teacher Carol Knowles and pupils three years ago - before the work.



● HAPPY DAYS: Karen Cartwright and year 4 pupils.

NEWS BRIEFS

Grants give a helping hand

YOUNG and old are being helped thanks to Lancashire Local grants.

The **Orcadia Morris** dancers in Old Skelmersdale got £500 from Councillor Chris Cheetham's "pot".

Age Concern is gaining £300 from Councillor Malcolm Barron's cash for community activities for people in Banks and North Meols.

Ignite Youth Group, Hesketh Bank, has gained £300, while **Mere Brow Youth Club** was given £310 for a games console and air hockey table. **Hesketh Bank Youth Club** is also getting £300.

New voices

CHILDREN and young people from across **West Lancashire** and **Chorley** got together to say what they wanted from the area's two new children's trusts.

Children's Trusts were created as a way of uniting all services for children and young people.

They were established in response to Lord Laming's report into the death of eight-year-old Victoria Climbié who died in 2000.

The young **West Lancashire** and **Chorley** group shared their ideas about local children's services - and said they wanted to see closer working and better communications between staff.

The trusts bring together organisations which work with children, young people and families.

Happy family fortunes

SERVICES for families in **Chorley** are to get a million-pound boost.

Eccleston, Adlington, Brinscall and **Withnell** are in line for new facilities in the third phase of Lancashire County Council's ambitious children's centre programme.

The programme - one of the most advanced in the country - has already established centres in **Astley** and **Buckshaw, Clayton Brook, Coppull, Duke Street** and at **Highfield**, off Eaves Lane.

Now plans are in the design stage for satellite services at **Eccleston** primary school and **Adlington** library, and talks are being held with a view to creating services at **Brinscall** and **Withnell** Athletic and Recreation As-

Million pound plan for vital centres

By Andy Swain

sociation. The total building costs for the three centres, to be opened by March 2010, is expected to be about £900,000 - with a further investment of £150,000 revenue funding.

Support

Services are likely to include access to early education and links to child-care, child and family health services, antenatal advice and support to pregnant women.

There could also be drop-in sessions and other activities for children and

help with job hunting. There are already 61 children's centres operating across Lancashire.

County council chair **Alan Whittaker**, who is also chair of governors at **Eccleston** Primary School, said: "These centres bring together all services for young families.

"And they do it at the heart of local communities, which is exactly what you need if you've got a pushchair,

shopping bags and children." County Councillor **Jennifer Mein**, Cabinet member for Children and Young People, added: "Lancashire is leading the way in terms of children's centres, with one of the largest and most developed networks in the country.

"This latest phase enables us to continue to increase the number of families which will benefit from them."

Keeping youngsters fit is just child's play

COUNTY council chair **Alan Whittaker** cut the first sod as work began on creating **Astley Climbing Forest**.

The new **Chorley** play area is the first of seven sites being developed as part of a £1.1m scheme to build new play areas across Lancashire.

Councillor **Whittaker** said: "Children and young people do better in all aspects of their lives when they're fit and healthy.

"Lancashire County Council is a leading 'Playbuilder' authority



● BIG DIG: Alan Whittaker, left, project officer Andy Brown, councillor John Walker and county councillor Mark Perks.

and will create first class play facilities across the county - places where children and young people can meet their friends safely, near to

where they live." The scheme is part of the government's £235m Play Fair programme to develop facilities for children aged 8-13.

Hope rises from the ashes

A DISUSED site is to be transformed into a £2m eco-friendly Children and Parenting Support Service Centre.

The centre, on the old **Fairlie** Primary School site in **Birch Green, Skelmersdale**, will provide support for local families.

The site has been disused since the old school was demolished after arsonists targeted it in 2007.

The new building has been designed to include environmentally friendly features to reflect the county council's commitment to green energy. A

ground-source heatpump - drawing heat from the soil all year round - will supply under-floor heating and help to reduce carbon emissions while lowering fuel costs by up to 75 per cent.

Work will start this month and will be completed in time for Christmas.

County Councillor **Jennifer Mein**, Cabinet member for Children and Young People, said: "This new building will provide services in a fantastic purpose-built setting for families and will join the growing number of county council properties being built to eco-friendly standards."

Lancashire Adult Learning

new skills?

new interests?

new start?

For a wide range of learning and training opportunities

call now!

Preston, Lancaster,
Fylde, Wyre:

01524 581269

Burnley, Hyndburn,
Pendle, Ribbles Valley,
Rossendale, Chorley,
West Lancashire,
South Ribble:

0845 600 1331



YOUR CHOICE
for learning
and skills

www.lal.lancashire.gov.uk

Lancashire
County Council

LANCASTER / RIBBLE VALLEY

Down your street

Schoolkids' green vision is in the bag

ST LEONARD'S CE Primary School in **Langho** has been awarded £500 to buy equipment for its Eco Club to manufacture reusable cloth bags.

They will be sold in schools to encourage children to use them instead of plastic bags.

Any profits made will be ploughed back into the Eco Club for further environmental projects.

Anne Pickup, St Leonard's headteacher, said: "We started with a competition to design an eco-bag and then we applied for the grant to buy the sewing machine to actually make them." The school has several other

eco-schemes including lights and litter monitors and growing vegetables.

She explained: "The children love it and when they see their own vegetables growing they are more likely to eat them too."

Waste Action Grants support projects, activities, resources or equipment to help encourage recycling and waste reduction in Lancashire.

So far more than 40 schools, organisations and community groups across Lancashire have received cash up to £500.

For information visit www.globalrenewables.co.uk/wasteactiongrants or call 01772 642885 quoting "Waste Action Grants".



● ECO-FRIENDLY: Children at St Leonard's school hard at work on their green bag project.

NEWS BRIEFS

Young voices are heard

CHILDREN and young people from across Ribble Valley and Lancaster got together to say what they wanted from the area's children's trusts.

Their report highlighted how closer working and better communications between agencies were crucial for improving services.

County Councillor Jennifer Mein, Cabinet member for children and young people, said: "It's great to have so many children and young people involved in this event."

"Ribble Valley and Lancaster children's trusts are playing a key role in bringing agencies together to deliver more integrated services that achieve better results for children, young people and their families."

The county now has 12 trusts. Each brings together a wide range of organisations that work with kids, young people and their families.

Local ideas

THE next meeting of Lancaster's Lancashire Local committee will be held on March 10 at 6.30pm at Morecambe Town Hall.

The committee unites the work of Lancashire County Council and Lancaster City Council to ensure that services are tailored to local need.

We're on the right road

WORK on the new Heysham M6 link road is expected to start in 2010 after Whitehall awarded the scheme "Programme Entry" status.

The Department for Transport has announced that the £137 million proposals have gained the first level of approval for the project.

County Councillor Matthew Tomlinson, cabinet member for sustainable development, said: "This is very positive news for the M6 Link project and means that we can move forward

2010 date set for new £137m M6 link

By Suzie Evans

with the plans for this worthwhile scheme. The county's team will be working hard to progress the scheme through the rest of the legal process.

Route

"Once completed, the new link road should greatly improve the inter-urban road network in and around

Lancaster and Heysham." Main highway works are set to commence in 2010 with the work expected to be finished in 2014.

The proposed route connects the already-built length of the A683 Heysham to M6 Link, at its junction with the A589 Morecambe Road near **Torrisholme**, to a fully remodelled

junction 34 on the M6. The route is a 4.8km-long, two-lane dual carriageway, with a footway/cycleway.

The scheme includes alterations to the local road network, including existing junctions. A total of 23 major structures will be built, including bridges over the West Coast rail line, the Lancaster Canal and the Lune.

The eyes of a child



● FULL OF COLOUR: Schoolgirl Cara Murray's own view of living in Lancashire today.

THE fresh eyes of children have cast Lancashire in a whole new light.

The county council organised a school competition to get children painting and writing about how they see Lancashire today.

Schools made the competition – judged by author Joseph Delaney – into projects for their pupils.

Ben Fourie, of **Salesbury** CE Primary School, was one of five runners-up and an edited version of his contribution is printed here. The winner was Katie Heaton from **Mawdesley**. Judges particularly liked two pictures from Cara Murray, who is also from Salesbury.

The council hopes to run the competition again later this year.

I'm a Lancashire lad

By Ben Fourie, Salesbury CE Primary School

ALTHOUGH I am a Yorkshire boy, born in the city of Hull, I think that Lancashire is very beautiful, in fact beautiful is an under-statement, I think it's drop dead gorgeous!

There are gazillions of bridleways and flat roads that are perfect for bike riders such as I and there is a civilised community which many of us can live in without being badly affected by bad things.

The facilities are fabulous, especially for sport. Sport is all around us, many being cheap and free. Hockey, football, cricket, fencing, Tai Kwon Do classes etc.

Hockey is my favourite because it is what I'm best at, and I play for Lancashire u-13s even though I'm only 10.

The school I go to is close enough to walk or to cycle to, and the journey is thoroughly enjoyable. There are pot holes in the road to fall down, trees to climb and hide behind, puddles to splash in and mud to run through.

I enjoy music very much, and draw great pleasure from it. I also play for Lancashire Schools Symphony Orchestra.

The north of England is a great place to live and I am now considered as a Lancashire lad.

Lancashire Adult Learning

new skills?

new interests?

new start?

For a wide range of learning and training opportunities

call now!

Preston, Lancaster, Fylde, Wyre:

01524 581269

Burnley, Hyndburn, Pendle, Ribble Valley, Rossendale, Chorley, West Lancashire, South Ribble:

0845 600 1331

YOUR CHOICE for learning and skills

www.lal.lancashire.gov.uk



Lancashire Adult Learning

Lancashire County Council

HYNDBURN / ROSSENDALE

Down your street

Brownies warm to n-ice winter sport

RISHTON Brownies are enjoying the winter sport of curling after receiving a cash boost from Lancashire County Council.

The ice game has been adapted to be played on a smooth floor indoors.

Despite the icy temperatures the Brownies preferred to play indoors with their new indoor curling kit.

The kit, worth £300, has castors on the stones so they can be used in the hall where the Brownies meet at the Methodist Church in Albert Street.

Leader Barbara Griggs said: "It's a

great game to play in winter when it's too cold and dark to go outside.

"We have got a curling league table going. We are hoping to invite other packs in the district to play a tournament next year."

Miles Parkinson, **Rishton** and **Clayton-le-Moors** county councillor, said: "The Lancashire Local committee awards hundreds of pounds in grants to local groups every month for activities."

For information about grants call **Harry Ballantyne** on 01254 384369.



● **CURLERS:** Brownies with leader Barbara Griggs and county councillor Miles Parkinson.

NEWS BRIEFS

Celebrating a nation's birth

BANGLADESHIS in east Lancashire are to get together on 29 March to celebrate the country's 38th anniversary of independence.

A social event will be held at the New Era Centre on Paradise Street, Accrington.

The event, organised by Hyndburn's Bangladeshi Welfare Association, will include presentations and a buffet. Celebrations, costing over £1,000, are being helped with a £230 grant from Hyndburn's Lancashire Local Committee.

A local voice

THE next meeting of Hyndburn's Lancashire Local committee will be held at 7pm on 9 March in the Springhill Community Centre, Exchange Street, Accrington.

The committee involves Hyndburn's county councillors in ensuring that council services are tailored to local need.

Hot stuff

THE New Era Trust has received a grant of more than £13,000 towards making them more energy efficient.

The money will be used to change the Paradise Street building's lighting so parts can be switched off when not in use, as well as replacing 28 lightbulbs with low-energy, long-life options.

Not only will the project save energy for the Accrington centre but it will cost less to run.

The view looks great!

ROSSENDALE will benefit from a £1.97m conservation and regeneration plan to preserve and improve part of the South Pennines.

The Heritage Lottery Fund (HLF) has earmarked a Landscape Partnership Scheme award for the area.

The South Pennines Watershed Landscape, which is led by regeneration partnership Pennine Prospects, will cover 350 square kilometres of the South Pennines.

This area consists of wide sweeping moorlands rich in wet bog, cotton grass, heathland and pasture.

£1.9m to preserve our lovely landscape

By Ginny Bridgewater

The project is made up of six parts, including getting people involved in the area's history and geology and enhancing key habitats for wildlife.

Stunning

They include the rare "twite" bird, which is also known locally as the "Pennine finch".

County Councillor Matthew Tomlinson, Cabinet member for Sustain-

able Development, said: "We will work hard to ensure that the money is used effectively to enhance what is already a stunning part of the county."

"Regeneration is about rural areas just as much as towns and cities."

"And spending almost £2m will go a long way towards safeguarding some of this country's finest landscapes and habitats."

Pam Warhurst, who is chair of Pen-

nine Prospects, said: "The area also faces some important challenges for the future. They include increased pressure for food production, renewable energy and flood prevention."

She explained: "This HLF money will help us conserve the landscape, improve the access to key sites, promote understanding of the heritage and engage people in managing future pressures."



● **YOU BEAUTY:** The rolling South Pennines looks at its wintry best in this snow scene.

Village centre gets a £320k makeover

WORK is underway on a £320,000 scheme to give **Crawshawbooth** Village Centre a radical makeover.

The centre, which was opened 20 years ago, has become the heart of the community and will bring together the library and the young people's service in an expanded and refurbished building.

Model

There will also be space for health services and for local community groups once the revamp is completed.

The centre involves the local Primary Care Trust and the residents' association.

And it may eventually become a model for similar projects elsewhere

in the county. To mark the work, Hazel Harding, leader of Lancashire County Council, will take part in a topping-out ceremony at the village centre.

That event is planned to take place early this month.



● **REVAMP:** Council leader Hazel Harding with youth club members Lauren Wright (16) and Shelley Howarth (16).

Lancashire Adult Learning

new skills?

new interests?

new start?

For a wide range of learning and training opportunities

call now!

Preston, Lancaster,
Fylde, Wyre:

01524 581269

Burnley, Hyndburn,
Pendle, Ribbles Valley,
Rossendale, Chorley,
West Lancashire,
South Ribble:

0845 600 1331

YOUR CHOICE
for learning
and skills

www.lal.lancashire.gov.uk



Lancashire Adult Learning

Lancashire
County Council

PRESTON / SOUTH RIBBLE

Down your street

Tina in good books

AVID reader Tina Jones certainly knows all about the Red Rose county.

Tina, from **Barton**, scooped the top prize in a competition to mark Lancashire Reads and the National Year of Reading.

Her effort was picked out from more than 200 correct entries in the special "How well do you know Lancashire?" quiz.

It was organised by Lancashire County Council's Library and Information Service, along with Lancashire Museums and the county's record office.

For the competition, the council

selected the popular children's horror fantasy novel, *The Spook's Apprentice*, a story of witchcraft, myth and magic set in historic Lancashire.

It is part of a series of books called *The Wardstone Chronicles* written by local author Joseph Delaney.

Pleased

Tina was presented with an iPod and signed copies of *The Wardstone Chronicles* by county councillor Anne Brown.

She said: "I'm pleased that our libraries, museums and archives are able to work together on projects such as this and promote our excellent services."



● WELL READ: Competition winner Tina Jones gets her prizes from Councillor Anne Brown.

NEWS BRIEFS

Speed cuts to save lives

A NEW 20 mph zone has been agreed for the Lytham Road area of Preston.

The proposed zone and traffic calming scheme is part of the Local Safety Scheme programme for this year.

Reducing speeds on appropriate roads can make a major contribution to the Government's road safety strategy and its casualty reduction targets.

By giving all road users more time to react, the lower speed limit will reduce both the number of accidents and the severity of the injuries.

The decision was made by Preston Lancashire Local.

Have your say

THE next meeting of Lancashire Local-South Ribble will be held on Wednesday, March 11, at 7.00pm at Penwortham Girls High School, Cop Lane.

The right note

ONE Voice Choir has received £200 from South Ribble's Lancashire Local committee. Many of its concerts are in aid of charities.

The next one will take place on March 27 at Kingsfold Methodist Church, Penwortham, in aid of St Catherine's Hospice, Preston.

A home from home

PARENTS and carers of disabled adults in Preston are to benefit from a £1.3m respite centre in Larches.

The finishing touches are being made to the county council's new state-of-the-art bungalow.

It will offer carers the opportunity to take a break from their full-time caring role for up to 14 nights. There



● STATE-OF-THE-ART: The new bungalow.

City gets a new £1.3m respite centre

By Andrew Lynn

are six en-suite bedrooms, a kitchen and dining room.

And the new centre also includes living areas, conservatory, laundry room, staff office, sensory room and a patio garden.

The building can also be converted into two sections to cater for minority ethnic communities or crisis respite if needed.

Support

There is full disabled access and two bedrooms and bathrooms have been fitted with special hoists and overhead tracking systems for moving individuals with profound disabilities.

And a team of care staff will be on hand to support those with complex needs 24 hours a day.

The new centre is part of the county

council's multi-million pound programme aimed at developing and refurbishing similar facilities across Lancashire.

That plan includes other projects in **Fylde** and **Lancaster**.

John Pearson, from Preston, has a son James, who is severely disabled and has epilepsy.

He currently receives respite care in **Lytham**, which is 12 miles from the

family home. John welcomed the new Larches bungalow as a major boost for the Preston area.

He said: "This is a marvellous new facility and something that has been lacking in Preston for some time."

"The building is very much part of the community."

"It is ideally located near to the park and close to the local services and buses."

Wheely good cause needs driven people

THE call has gone out for volunteer drivers to get behind the wheel in **Preston** and **South Ribble**.

The drivers are used to take people on basic trips they could not take on their own and without which they would miss out on day-to-day contact with their community.

Volunteer drivers are not paid but the county council contributes 40p per mile towards their petrol and running costs.

The drivers are used to take people shopping, to the post office and to visit friends and relatives.

Community transport co-ordinator, Elaine Winrow, said that volun-

teer numbers had fallen recently – and that money was already set aside to help others.

She said: "These volunteers are so important because without them some of these people are left socially isolated because they can't get out and about."

Time

"There may well be people out there with time on their hands who have a car they don't use much, but who don't know about the scheme."

"We are hoping people like that will come forward to donate a bit of their time."

To find out more contact Elaine Winmore on 01772 536778.

It's a great place to learn

A RANGE of community facilities are now open to the public at a new learning centre.

St Mary's RC High School and Sports College, in **Bamber Bridge**, opened the centre last year.

It has since raised £30,000 to employ a

member of staff to support families in the area.

The next step is getting members of the community to use the new facilities, which include a conference room, play facilities, and a toddler group.

Organiser Christine Vaughan-Evans said: "Any groups or clubs,

young and old, can come and take a look."

"We are planning an open day and people can come and join existing groups at the centre – or even set up their own."

The centre is open from 4pm to 9pm.

For more details call Christine on 01772 339813 ext 250.

Lancashire Adult Learning

new skills?

new interests?

new start?

For a wide range of learning and training opportunities

call now!

Preston, Lancaster,
Fylde, Wyre:

01524 581269

Burnley, Hyndburn,
Pendle, Ribble Valley,
Rossendale, Chorley,
West Lancashire,
South Ribble:

0845 600 1331

YOUR CHOICE
for learning
and skills

www.lal.lancashire.gov.uk



Lancashire Adult Learning

Lancashire
County Council

FYLDE / WYRE

Down your street

Young voices ring out for the future

CHILDREN and young people got together to let everyone know what they want from Wyre Children's Trust.

Children's Trusts were created as a way of bringing together all services for children and young people.

The young Wyre group shared their ideas about local children's services at Thornton Little Theatre in Thornton Cleveleys.

Their report highlighted how closer working and better communications between agencies were crucial for improving children's

services.

County Councillor Jennifer Mein, cabinet member for children and young people, said: "Underpinning the Children's Trust is the need to see and listen to children and respond to their needs, so it's great to have so many children and young people involved in this event."

"Wyre Children's Trust is playing a key role in bringing everyone together to achieve better results."

Wyre Children's Trust brings together a wide range of organisations that work with children, young people and their families.



● **STRONG IDEAS:** County Councillor Penny Martin, chair of Wyre Children's Trust with Councillor Gordon McCann, mayor of Wyre, Jessica Kitt, Wyre's "youth mayor", County Councillor Jennifer Mein and schoolchildren from across the area at the special meeting.

Green light for change

A VILLAGE hall is at the forefront of the battle against climate change thanks to a £14,200 county council grant.

A hefty 8,600kg annual reduction in carbon is expected after energy-saving works are complete at Freckleton Village Memorial Hall.

The money was approved by Fylde's Lancashire Local committee.

Similar committees across the county are awarding grants to encourage citizens to reduce the county's "carbon footprint". Works will include

Village hall gets £14k for climate fight

By Neil Graham

improving insulation and a secondary ceiling to allow more insulation.

Testing

County Councillor Bernard Whittle, Fylde Lancashire Local chair, said: "The county council is committed to reducing energy wastage – and we need to get ordinary people and organisations on board. We will be test-

ing the energy used before and after these improvements.

"An initial study suggests that annual carbon reductions will be in the region of 8,620kg.

"We also expect to see more efficient lighting. About 400 people use the hall every week, so the energy-saving message will go far and wide."

The village hall is run by a charity and members have already raised money to complement the £14,200.

Have you got a project in mind and does it need financial support from the county council's Climate Change Fund? Call Jackie Tomlinson on 01772 531257 or log on to: www.lancashire.gov.uk

It's a belter shelter

NEW shelters will put a stop to people getting soaked while waiting for the bus on a popular Wyre route.

The £60,000 scheme, approved by Wyre Lancashire Local members, will mean five new bus shelters at existing stops on the Line 14 Fleetwood to St. Annes route, mostly on Fleetwood Road with one on Black-

pool Road. Improvements to existing shelters are also planned, including raised kerb boarding points, replacement shelters and bus stop clearways.

The new and improved bus shelters will have seating, lighting and bus service information as well as vandal-proof fittings, clear glazing to allow people to be seen and a domed roof to deter climbing.

Bowling 'em over

FYLDE cricketers will receive a warm reception at their local club after a council-funded overhaul.

Lytham Cricket Club has used a Climate Change Grant of £13,761 from Lancashire County Council to install energy-efficient heating.

Solar panels with a new hot water cylinder now heat the water.

All windows have been double glazed and heat-saving radiators with thermostatic valves have been fitted.

The work was carried out by local firms and club president Peter Harris said the benefits were noticeable.

He said: "This all reduces the need for usage of fossil fuels, oil in our case, thereby reducing our carbon footprint."



● **OWZAT:** The improvements at Lytham Cricket Club have proved an energy winner. From left, Peter Harris, Graham Stuart and County Councillor Tim Ashton.

This grant has given a huge boost to our green credentials."

Wheely good cause

THE call has gone out for volunteer drivers to get behind the wheel in Fylde and Wyre.

The drivers, who get a contribution towards

their petrol and running costs, are used to take people on basic trips they could not take on their own.

Community transport co-ordinator Elaine Winrow said: "Without them

some of these people are left socially isolated because they can't get out and about."

To find out more about the scheme please contact Elaine on 01772 536778.

Lancashire Adult Learning

new skills?

new interests?

new start?

For a wide range of learning and training opportunities

call now!

Preston, Lancaster,
Fylde, Wyre:

01524 581269

Burnley, Hyndburn,
Pendle, Ribbles Valley,
Rossendale, Chorley,
West Lancashire,
South Ribble:

0845 600 1331

YOUR CHOICE
for learning
and skills

www.lal.lancashire.gov.uk



Lancashire Adult Learning

Lancashire
County Council

family finances

Head for the hills The countryside is free, fun and healthy... and on your doorstep

EXPLORING, discovering, learning and enjoying: It's all waiting for you in Lancashire's beautiful countryside.

The Lancashire Countryside Service events programme 2009 is now available offering nearly 100 activities including guided walks, open days and children's activities.

Many of the family events coincide with the school holidays, offering ways to entertain the children at no cost.

There is something for everyone: gentle strolls, arts and crafts events and even an exciting all day mountain biking challenge.

The council's friendly and enthusiastic staff will be at each event to help and guide you. So even if you have never done anything like this before, this is your chance.

A walk in the countryside is always an uplifting experience. It is not only good for general health and fitness, it has been shown to relieve symptoms of depression and anxiety.

Walking, particularly in Lancashire's beautiful countryside, can be very relaxing.

Events such as these make it easier and more comfortable for people who are not already regular walkers to make a start and get the benefit of some of the best exercise around.

Making walking a regular part of your life can reduce the risk of heart disease and



●TRAIL: Out and about enjoying the countryside

strokes, lower your blood pressure, help you to lose weight and help you to relax.

The majority of events are free and for many you just need to turn up at the appointed time and place.

Booking is recommended for some events where numbers are limited and you can now book online.

Many of the events are

"Tramper Friendly". Trampers are all terrain electric buggies, available, free of charge, for people with limited mobility. Numbers are limited so it is essential to book in advance. Full training will be given if you have not used one before!

If you are aged between six and 14 years of age, you could become a Junior Ranger at Beacon Fell, near Preston.

Meeting on the first Saturday of every month you can have a wild time as part of this wildlife club.

For further information about any events please call **01772 534 709** and we will send you a copy of the full programme or you can visit our website and even book online: www.lancashire.gov.uk/environment/countryside



Keep healthy and save pounds

Great places across Lancashire to enjoy the countryside

IF you are watching your household finances, why not take the family for an afternoon out and about in Lancashire's countryside?

It's a fun way to spend time together as a family, get healthy and best of all it's free!

So you can tighten your belt in more ways than one.

Whether you fancy a woodland walk, a riverside stroll, a gentle bike ride or an exhilarating mountain bike run; there are plenty of things to do.

Lancashire Countryside Service has country parks, picnic sites, nature reserves and woodland across the county which are free to explore.

Picturesque

Beacon Fell Country Park, near **Longridge**, has a network of easy-to-follow paths, interesting sculptures to find, scenic views to enjoy and even a cafe for a relaxing drink and a bite to eat.

Wycoller Country Park, near **Colne**, has historic bridges and ruins, a beckside walk and the chance to gain a new perspective by viewing the scenery through The Atom - one of East Lancashire's

Panopticons.

The Crook O'Lune, near **Lancaster**, offers riverside strolls along the River Lune that once inspired the landscape painter JMW Turner. It also connects to the Millennium Cycleway for traffic free family cycling or a relaxing picnic next to the river.

Preston Junction Local Nature Reserve is countryside on the city's doorstep. Follow the old railway line network south of the River Ribble in this green oasis, just minutes from the city centre.

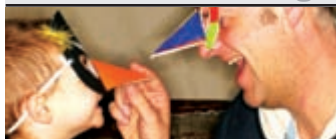
Adrenaline

For sports-minded people, The Adrenaline Gateway at Lee Quarry in **Rosendale** offers cycle trails for serious mountain bikers - within Lancashire. The former stone Quarry, near **Bacup**, offers red and black runs to test your skills in a dramatic gritstone quarry.

There are sites all over Lancashire, not to mention 6,000km of public footpaths and bridleways and it needn't cost a penny!

For more information visit the countryside service telephone **01772 534 709** or visit the website: www.lancashire.gov.uk/environment/countryside.

Event listings



Saturday 14 March

10.30am-4.30pm
Discovery Walk in the Forest of Trawden.
Pepper Hill Barn, **Wycoller**.
A landscape of dramatic moorland, fascinating historical features and natural delights.
A moderate walk.
People should bring along their own packed lunch.

Sunday 15 March

1pm-3pm
Lee Quarry Winter Walk.
Kingfisher Centre, off Newchurch Road, **Bacup**.
A close look at the fascinating industrial archaeology trail of Lee Quarry. Moderate walk.
Booking is recommended for Tramper users.

Saturday 21 March

9.30am-12.30pm
RSPB Granny's Bay bird walk.
Meet at RSPB Ribble Discovery Centre, Fairhaven Lake, Inner Promenade, **Lytham St Anne's**. Booking essential.
Telephone **01253 796 292**.

Saturday 4 April

11am-4pm
Friends of Beacon Fell Open Day
Bowland Visitor Centre, Beacon Fell Country Park, **Longridge**.

Bird Box Making, Games and stalls.
Booking is recommended for Tramper users.

Sunday 5 April

1.30pm-4pm
Cowm & Cow Clough Hamlet.
Cowm Water Ski Centre.
Discover Cowm Valley, where the many farm ruins bear witness to a busy and lively lost civilisation. An easy walk.
Booking is recommended for Tramper users.
Public Transport: Bus number 464.

Monday 6 April

10.30am-3pm
Woodland Work Day.
Spring Wood, **Whalley**.
A chance to help with woodland management and undertake some practical tasks. Not suitable for children under eight years.
People should bring along their own packed lunch.

Tuesday 7 April

1pm-4pm
Crafts at Wycoller.
Pepper Hill Barn, Wycoller.
Seasonal arts and crafts for all the family.

Wednesday 8 April

11am-3pm
Giant Easter Egg.
Bowland Visitor Centre, Beacon Fell Country Park, Longridge.
Papier mache eggs, make and decorate your own.
Booking is recommended for Tramper users.

Sunday 12 April

1pm-4pm
Easter Egg Competition.

Pepper Hill Barn, Wycoller.
Painting and rolling eggs competitions at 1pm and 2pm.
Booking essential to avoid disappointment. 24 places available. Booking is also recommended for Tramper users.

Tuesday 14 April

1pm-4pm
Crafts at Wycoller.
Pepper Hill Barn, Wycoller.
Seasonal Arts and Crafts for all the family.

Until Saturday 11 April 2009

M6:50 exhibition.
Museum of Lancashire, **Preston**.
Discover how the Preston bypass was designed and built. Marking the 50th anniversary of the opening of the bypass.

All year round

Beacon Fell Country Park, near Longridge.
Beginners orienteering. Basic orienteering packs are available from the Bowland Visitors' Centre for £1.50.

Until Saturday 18 April 2009

City Museum, **Lancaster**.
Take a look at the new exhibition titled 'Get On Yer Bike.' Social history of cycling. Range of bikes on show from the Penny Farthing to the BMX.

Until Monday 4 May

Rosendale Museum.
Phoenix Textiles.
Lancashire-based group of textile artists whose work incorporates contemporary techniques and mixed media. Explores two diverse themes - Geometric Fluidity and Queen Elizabeth I.

USEFUL NUMBERS

Bowland Visitor Centre,
Beacon Fell Country Park
01995 640557
Wycoller Country Park
01282 870253
Spring Wood Picnic Site
01254 825187
Lancashire Countryside
Service main office
01772 534709
Museums' main office
01772 534061
Museum of Lancashire
01772 534075

Lancaster Maritime Museum
01524 382264
Judges' Lodgings
01524 328088
Lancaster Castle
01524 649988
Lancaster City Museum
01524 64637
Helmshore Textile Museum
01706 226459
You can find lots of information about events on:
www.lancsmuseums.gov.uk and at
www.lancashire.gov.uk/environment/countryside



Spring-cleaning is always a chore - but think how **hard** it would be if you had to do it with an artist's brush...

HOW CLEAN IS YOUR STATELY HOME?

ANYONE peering through the frosty lead windows of this 400-year-old stately home to spy people in protective clothing, vacuum packs on their backs, nozzles and brushes in hand, might think they had stumbled onto the set of CSI.

But, in fact, specialist conservation staff at Gawthorpe Hall are carrying out the Padiham landmark's annual winter clean in readiness for public visits.

All silver and brass is polished, fire places and grates are blacked, carpets lifted, windows washed, chandeliers cleaned, and floors waxed and polished.

One of the largest jobs this year involves cleaning the magnificent original drawing room ceiling and frieze - a task only done every four years.

Back-breaking

Fashioned by famed craftsmen Francis and Thomas Gunby, the plasterwork features mermaids, griffins, lions, plants, vines and fruiting branches from the 14th century.

"Cleaning and taking care of something like this is a delicate job," explains Rachel Pollitt De Duran, Gawthorpe's assistant keeper at Lancashire County Council.

This back-breaking work involves standing on scaffolding using tiny



brushes to remove dust from the plasterwork which is then hoovered immediately with a tiny vacuum backpack. Staff also check for damage or cracks.

For Rachel, the oak-panelled drawing room - and particularly the large octagonal walnut table inlaid with Lancashire rose designs - is her favourite part of the house.

"It's really nice and cosy in this room", says Rachel. "It would have originally been the dining room, but was made into a drawing room in the 1850s."

It is also the room where Charlotte Brontë stayed when she visited. It is said that during Charlotte's second visit to Gawthorpe Hall in 1855 she insisted on walking in the grounds and caught a chill from which she died two months later.

The hall boasts the North West's biggest loan of paintings from the National Portrait Gallery, including those depicting Charles II and the English Civil War, and also holds the finest collection of textiles outside of the Victoria and Albert Museum.

Gawthorpe Hall was given to the National Trust in the early 1970s and became a college for teaching textile techniques for several years before it was opened as the historic house and museum it is today.

It is managed by Lancashire County Council on behalf of The National Trust with the help of over 30 local volunteers.

(Above) Rachel Pollitt dusts the vast ceiling with...a paintbrush.



Vision videos

Visit the Vision website to see an exclusive video on this story:
www.lancashire.gov.uk/corporate/vision



Gawthorpe Hall opens again on 1 April with free parking and tea rooms from April to October on Saturday, Sunday, Tuesday to Thursday and bank holidays, 1pm-5pm. Group and school visits are welcome.

For more information contact Gawthorpe Hall directly on **01282 771004** or visit online at www.lancashire.gov.uk/museums



LOAN SHARKS

Help us to beat them

MOST people who borrow are in control of the situation - but a growing number of people are finding their debt problem is getting out of hand.

Charges made for borrowing can vary by very high margins. Some borrowers can still obtain finance at low rates. But many find easy-access money can cost well into three figures.

Too many individuals with financial problems can only borrow from high-cost lenders. Some have to resort to illegal loan sharks, where violence may be used.

The credit industry is highly regulated. But regulation's success depends on people making their complaint known.

Trading standards officers are concerned that not enough people seek help and that too many are being forced into the hands of unscrupulous loan sharks.

Loan sharks are typically seen as someone who can help when credit dries up. However, it can soon become a serious problem when aggressive practices are used when weekly payments are missed.

Missed payments will result in extra charges with violence and intimidation.

For complaints involving licensed lenders, follow these simple steps:

Tell the lender the situation you are in. Responsible lenders should try to assist and resolve the problem.

Seek advice and guidance. It is available from your CAB; from National Debt Line FREEPHONE 0808 8084000; and from Consumer Credit Counselling Service FREEPHONE 0800 1381111.

If the lender is acting in an unfair, aggressive, intimidating or otherwise inappropriate way register a complaint with Consumer Direct 08454 040506.

If the problem involves unlicensed loan sharks, then help is available from a new loans shark helpline 0300 5552222.

This is available 24 hours a day 365 days a year to provide information and help with loan sharks.

Julian Edwards

Senior trading standards officer

Letting
your
ideas
grow

Rosebud
Call us on
**01772
536652**

We change lives

Lancashire County Developments Ltd

Business
Finance
based on
understanding
your needs.

Lancashire
County Council

FOOD FOR THOUGHT

Dud whisky and bolts in pork pies...it's all in a grisly day's work for the county council's lab team

WHAT'S the worst thing that could happen at the dinner table?

How about finding a bolt in your pork pie? Or maybe a snail shell in your pasty? Both are horrible thoughts, but foreign objects are easy to spot and easy to deal with.

But how would you find out if your curry contained a hazardous dye, or if the vodka you were drinking as a weekend treat was more suitable for cleaning windows than sipping from a shot glass?

That's where Lancashire County Council's scientists come in.

Their role? To examine food to ensure its quality, safety and freedom from contamination.

In fact, Lancashire County Council's laboratory is home to some of the UK's most experienced and skilled analysts who provide valuable public protection services around the clock.

Lead in bread

Peter Mayes, Lancashire's county analyst and chief scientific adviser, said: "The role of county analyst was created a long time ago when bakers and confectioners rou-

→ **WHO'D** have forked it? Analyst Anne-Marie Wilkinson finds out exactly what's in the food from the shops.



Vision videos

Visit the Vision website to see an exclusive video on this story:
www.lancashire.gov.uk/corporate/vision

tinely used things like white lead when baking bread.

"Back then it was a cheap and easy way to make their products taste good, but the end result was that you ended up with a lot of ill people.

"People think that those days are behind us, you only have to look at the recent scares over melamine in baby milk from China and fake spirits that would be better used as anti-freeze to realise why analysts are still important."

The County Laboratory in Preston is packed with high-tech, and sometimes low-tech, gadgetry and is home to some of the best scientists in Lancashire.

Some work comes via trading standards officers who receive complaints from members of the public. They are also called on when there is a chemical spill or mystery container dumped somewhere in the county. Staff work hard all year to root out rogue chemicals in food and even things like excess water or "disguised" chicken.

Immoral

Eric Turpin, deputy county analyst, explained: "The vast majority of the food you find on sale is safe, but we are the only people who can tell if something really is what the label says it is.

"While adulteration is not always dangerous it can be seen as immoral."

The things our analysts have found

Whisky found to be cold tea.
Meat products with 800 million bacteria per gram. Do you like your meat with or without slime?

Vodka containing 20 times the legal limit of methanol. Fancy getting blind-drunk?

Beefburgers containing

non-permitted colours.

Unfit chicken.

Gin described as Gordon's when it was not.

Single malt whisky - it's whisky but not malt.

Potatoes with high levels of sul-

phur dioxide preservative. They don't go brown in storage.

Sausages with soya protein to disguise the level of meat. Are they chewy?

Kebabs with high levels of fat. It may not affect the taste but is heavy on the arteries.

Living in Lancashire

compost it

FREE
compost
bin
?

Have a Heart, give a
Compost Bin
a HOME

Order your
FREE bin
online today at
www.recyclenow.com/compost/ or via the
order line 0845 076 0223

A home compost bin is the ideal way to turn grass cuttings, prunings, sods and vegetable peelings into your very own special compost full of goodness ready to give flower beds and veggie patches a little helping hand.

Alternately
for more
information on
home composting
and to find
local events
check out

www.lancashire.gov.uk
or via the helpline
0845 0500 110



LOOK LIVELY

VOICE OF VISION



Stewart explains how staging gigs featuring some of the hottest-tipped bands in the UK is encouraging more young people through the doors of libraries

Why did you become a librarian?

I wanted to be at the hub of culture and to be in a position to allow that culture to have an impact on the local community and people's lives.

What does your job involve?

Developing a youth audience in libraries across Lancashire.

Libraries have to attract more young people. There are a number of ways in which to do that.

What is the appeal of your job?

Making libraries a little bit more "box office" in terms of high-profile mainstream pop culture, but allowing them to stay true to their roots and allowing young people to get involved and lead the way forward.

It's a real buzz to enable change and forward thinking in libraries. Doing stuff out of the box makes me very happy.

What is Get it Loud in Libraries (GILIL)?

GILIL is the county council's popular music project designed to give people a completely new and fabulous time in a library by using brilliant bands and brilliant young local volunteers.

What has been the best gig played at the library?

Too many to mention! Dawn Kinnard was magical - a real class act. Florence and the Machine were awesome. Adele made everyone's jaw drop. Noah and the Whale was just total dancing.

What motivates you?

Seeing 200 kids squealing to get in a library on a Saturday night - nothing can beat it! Venues for under-18s are scarce - libraries fill the gap admirably.

How have libraries changed over the years?

For the better, although there is still much work to do. It's wonderful for libraries to use their space in such a creative and thrilling way to benefit the whole community.

For more information about Get it Loud in Libraries visit online at www.lancashire.gov.uk/libraries or www.myspace.com/getitloudinlibraries

Nominate a youngster for top citizen award

LANCASHIRE County Council, along with the Lancashire Evening Post, has launched the monthly Lancashire Young Citizen Award.

The award is open to anyone under 18 who has made an outstanding positive contribution.

The eligibility criteria are deliberately open, to reflect the many positive ways in which young people make a contribution.

For example, the award may be for a one-off act of bravery or kindness, or for ongoing selflessness and service to a cause - anything that makes a difference to others.

County Councillor Jennifer Mein, Cabinet member for Children and Young People, said: "Young people too often receive a bad press.

"This award recognises that the vast majority of our young people are involved in many positive activities."

Because of the Lancashire Evening Post's readership area, nominations are only sought from the following areas of the county: **South Ribble, Chorley, Fylde, Wyre, Lancaster, West Lancashire and Preston.**

If you would like to nominate a young person for the award, please fill in the form and return to Andy Swain, Directorate for Children and Young People, Lancashire County Council, PO Box 61, County Hall, Preston PR1 8XJ

Nominations close on the sixteenth of each month. The award will be run over several months.

I would like to nominate...

Name of nominee..... Age.....
Reason for nomination (continue on a separate sheet if necessary)

Nominated by.....

Address.....

Tel no.....Email.....

Organisation (if any).....Date.....

Eateries cook up Recipe 4 Health

LOCAL eateries are fighting back over recent criticisms of the nation's restaurants, by signing up to a Trading Standards-backed scheme to promote healthy eating.

The Lancashire County Council Recipe 4 Health scheme, is sweeping its way across the county, improving the health of Lancashire residents as it goes.

The scheme rewards restaurants, takeaways, nurseries, care homes and any other catering businesses, that provide healthy options, for their customers.

Other aspects of the scheme look at environmental, allergen and alcohol awareness. The premises also have to come up to scratch.

Trading standards officers obtained NHS funding to conduct sampling and analysis of "healthy options" at Recipe 4 Health businesses, to show just how healthy eateries are.

Aamena Kapasi, project manager, said: "The Recipe 4 Health Scheme and this sampling survey aim to show that just because you are eating out, doesn't mean you will pile on the pounds.

"You will find there are plenty of options available at our Recipe 4 Health businesses that allow you



●QUALITY treat: chef Deborah Bramald and Recipe 4 Health organiser Aamena Kapasi.

to maintain a healthy lifestyle"

Anyone wanting to find out more about the scheme or which local businesses have obtained the award should go to www.lancashire.gov.uk/

recipe4health and click on the website's "Award Holders" button.

Debbie Bramald, chef at the Chai Cafe in **Burnley**, said: "We have always promoted and provided health food in

our café but receiving the award has been an added feather in our cap."

For details on how to join the scheme, visit the website above and click on "How do I apply?"

WANT TO LET OFF STEAM? SOMETHING YOU WANT TO GET OFF YOUR CHEST? WRITE A LETTER TO VISION

The Editor, Vision, Corporate Communications, County Hall, Preston PR1 8XJ. Email: neil.graham@lancashire.gov.uk

Electric blanket safety: shock results

By Martin Crabtree

THE county's trading standards team is concerned that householders could be unsafe in their beds as 58 per cent of electric blankets tested in a recent survey failed vital safety checks.

This follows a week of checks carried out by Lancashire County Council's trading standards officers at venues throughout the county where householders were invited to bring along their blankets for testing.

Of the 257 blankets that were tested, 149 failed the safety tests.

Common faults found included:

- Evidence of overheating and insulation breakdown;
- Heating element wires becoming separated from the cloth blanket leading to the coiling of the element;
- Vital anti-overheating protection not fitted;
- Exposed live wires.

Some unsafe blankets are still in use despite being the subject of a product safety recall dating back to 2001.

County Councillor Marcus Johnstone, Cabinet member for Community, Planning and Partnerships, said: "Each year there are approximately 1,000 fires in the UK caused by faulty electric blankets and figures suggest

that it is generally older people who are at greatest risk.

"Over the past five years there have been three deaths in Lancashire involving fires caused by electric blankets."

Efficient

The checks, carried out in partnership with Lancashire Fire and Rescue Service, are particularly worrying given the high level of faults revealed.

Electric blanket users are being urged to check their blankets regularly and buy a new one if it is old or showing signs of damage.

Further testing programmes are now being planned.

DANGER SIGNS

If you see any of the following, you should have your blanket checked by an electrician or replace it:

Fray marks

Scorch marks

Exposed elements

Creasing/folding

Damp patches

Displaced wires

Approximately 99 per cent of electric blanket fires are believed to have involved blankets that are more than ten years old – in particular those without overheat protectors.

Cash at hand for youth projects

YOUTH groups from all over Lancashire turned out in force to celebrate the county's Youth Bank.

Since 2006 nearly 20,000 young people in the county have been helped by government cash which is distributed by young people themselves.

The celebration, at the Harris Conference Centre in Preston, was organised and hosted by members of the Youth Bank and included a drama production, a film and presentations and performances by seven youth groups from across Lancashire.

Helen Denton, executive director for Children and Young People, said: "This is a great project as it is all about putting young people in control of the money."

"They have a genuine say about what activities and amenities they want and are needed in their area by applying for funding and also making decisions on how money is spent."

"The celebration is a chance to witness at first hand what young people can achieve given the support, the time and the money to go out and make a difference."

More than 80 people were treated to perform-



● **MONEY** in the Youth Bank: members of South Ribble music group JJam at Your Own Risk show off their talents.

ances, including MCs from Marsh Community Centre in Lancaster, songs from the Pendle Youth Choir, Breaking Barriers - an urban dance group from Burnley - and a musical performance by JJam at Your Own Risk from South Ribble.

More than 40 young

people took to the stage to show off their talents and explain how the funding they have received through the Youth Bank had helped them and their communities.

The Youth Bank - made up of specially trained and supported young people from

across Lancashire - distributes cash from the government's Youth Opportunity and Youth Capital Funds.

Young people aged 13-19 can apply for funding for their own projects which either give young people something positive to do or somewhere to go.

Youth Banks then make decisions on who gets the funding.

Groups that have received funding include the First Warton Sea Scouts who bought wet-suits, the Youth Arts Cinema group in Lancaster who received money for an award-winning film project,

and Oswaldtwistle Community Group who received funding for a trip to London.

Morecambe Foyer, a shelter for homeless young people, received cash to refurbish a games and living room and, in Chorley, funding was made available for a multi-use games area.

Since 2006 over £3.2m has been distributed to young people across Lancashire with more than 19,500 young people benefiting from the projects and facilities funded.

The scheme has now been extended and funding has been made available until 2011.

To find out more, visit the Young People's Service website - www.lancsycs.org - to download an application, telephone 0800 511 111 or e-mail Hannah.peak@lancashire.gov.uk.

For those interested in putting in a bid to receive funding from the Youth Capital Fund (for example, for building or improving youth spaces or premises, buying equipment, etc.) the deadline for getting your application forms in to your local Youth Bank is 24 April 2009.

You need to act quickly!

NEWS BRIEFS

Take a look at art on our top website

AN INTERACTIVE art website for schoolchildren, which is managed by Lancashire County Council, has won a children's BAFTA award.

www.artiscam.org.uk beat off stiff competition from some of the country's leading interactive production companies to win the Learning Primary category at the EA British Academy Children's Awards.

The free website, which features leading artists, including Antony Gormley and Gordon Cheung, encourages children to get involved in artistic activities.

Teachers can make use of online classroom workshops, with masterclasses led by an artist.

Activities range from sculpting and painting to sewing and jewellery making - and as well as watching from their computer screens, children can ask questions in live web interviews.

ArtisanCam is produced by a partnership of Artistsatwork and Cumbria and Lancashire Education Online (CLEO), one of ten regional broadband consortia providing broadband technology and educational content for schools in England.

Help at hand to tie the civil knot

LANCASHIRE couples who are planning to tie the knot can now get hints and tips from a new glossy civil partnership brochure produced by the county council's Registration Service.

The free brochure provides information and advice that needs to be considered in preparation for the big day.

The Civil Partnership Act 2004 came into force on 5 December 2005 in the UK, allowing same-sex couples to obtain legal recognition of their relationship.

Couples who form a civil partnership have a legal status: that of 'civil partners'.

Gill Greeson, superintendent registrar at Lancashire County Council, said: "A civil partnership is an entirely non-religious process but a legal commitment that gives people the ability to obtain legal recognition for their relationship."

For your free copy of "Your Civil Partnership" brochure, contact any Lancashire Registration Office, telephone 0845 0530021 or visit the website at www.lancashire.gov.uk/registration

Councillors on the move

MORE than 6,200 people came to Lancashire County Council "Meet Your County Councillor" mobile unit between May and December.

The unit travels the length and breadth of the county, making it easier for members of the public to meet face-to-face with their local county councillors.

The councillors are there to help! They are there to help with queries and concerns and to discuss local issues.

More than 50 county councillors have attended - and helped with questions ranging from education, welfare and care for older and vulnerable people to trying to improve the environment.

During December, "Father Christmas" joined the county councillors at Accrington, Fleetwood, Burnley and Nelson.

Friends have a vision for Regent Park revival

EXCITING plans to transform Regent Park in Morecambe have been unveiled.

The popular park was once Morecambe's principal entertainment centre and was originally called the Summer Gardens.

Built in the 19th century the gardens included a circus, ballroom, aquarium, conservatory, racecourse and a boating pool.

The park was largely abandoned from the mid-1890s and the land was eventually bought by Morecambe Council in 1924. It

is now in the ownership of Lancaster City Council.

Over the last few years a "friends" group has been established which has been instrumental in a number of recent park improvements, including the refurbishment of one of its three bowling greens to competition standard and the development of a designated children's play area.

And now the Friends of Regent Park, with the support of Lancashire County Council's Community Design Programme, have

taken delivery of professional drawings which, it is hoped, will help kickstart improvements.

County Councillor Janice Hanson, Cabinet member for Highways and Planning, said: "Many community groups often find themselves with a good idea for a project, but lack the resources to get their vision down on paper."

"Good illustrations, plans, specifications and costs are invaluable for community groups wishing to attract the funding they need to implement their projects."



● **REGENERATION** plans: County Councillor Janice Hanson hands over plans to Graham Buckley, David Whittaker and Peter Robinson of the Friends of Regent Park

We're growing up

A bigger and better service
is just around the corner from
Lancashire Childcare Information Service.

For more information and a chance to give us your
comments, visit: www.lancashire.gov.uk/childcare - "Get clicking"
or call 0800 1950137.

